

M. H. Graat

9.

2. Högst. Solos af Wendling.
5 ditto af Kleinneccit. 3 ditto
af F. H. Graat. 2 ditto af Götzl.
1 ditto af Le Brun og 1 ditto
af Abel.

(C. I. 79.)

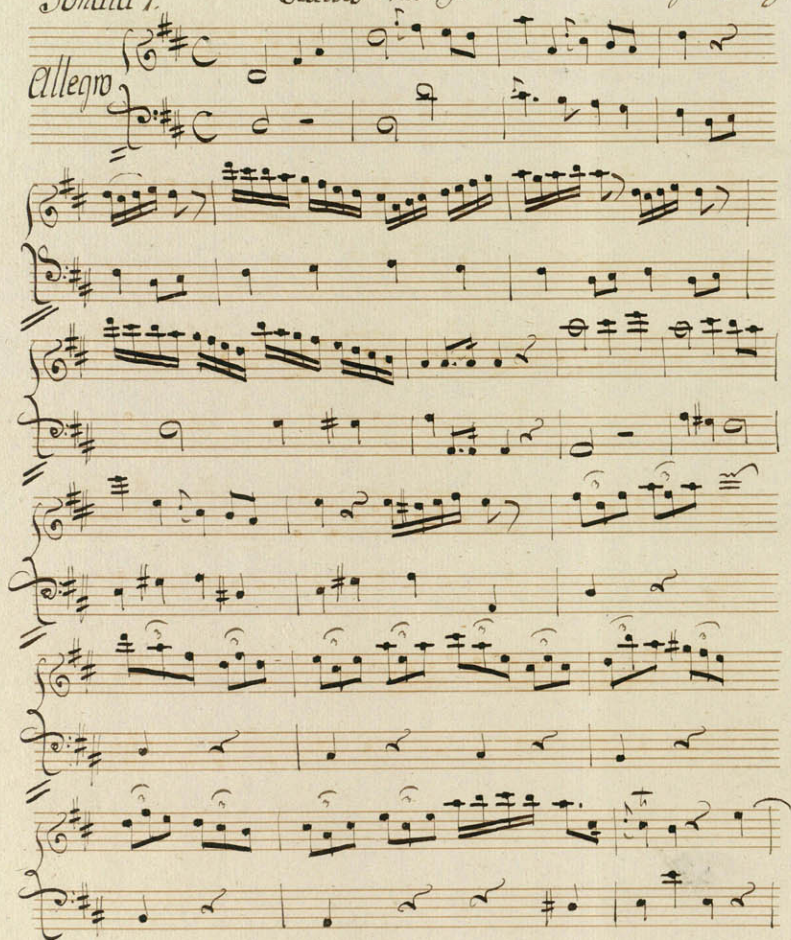
restaurer of King's Library
November 1958

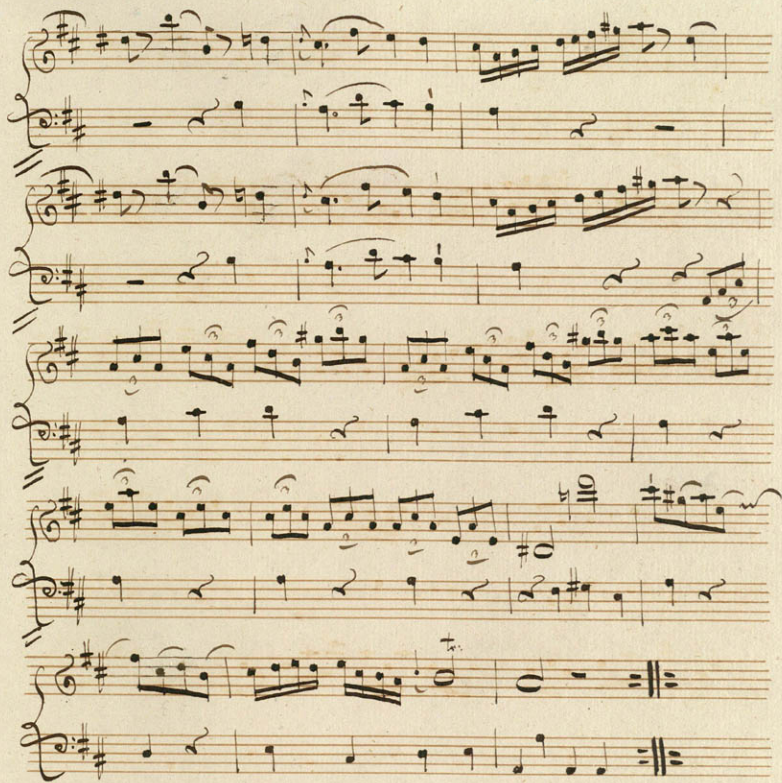
Gieddes samling I 9



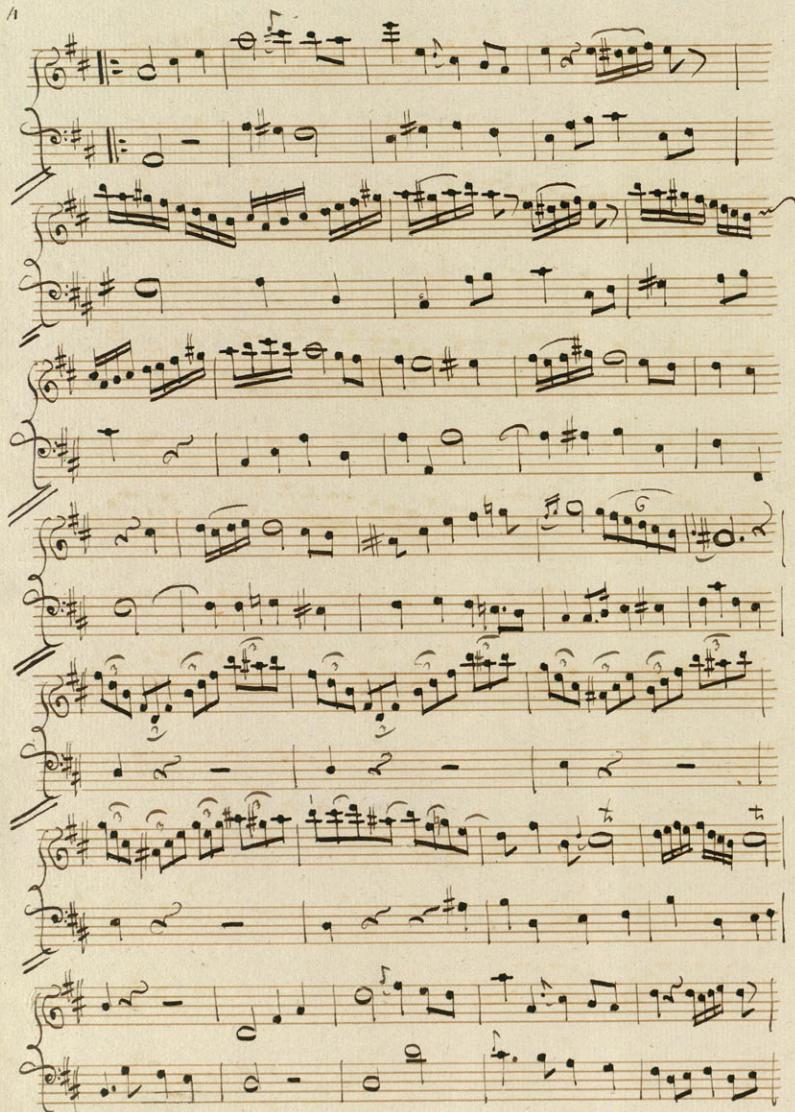
Sonata i.

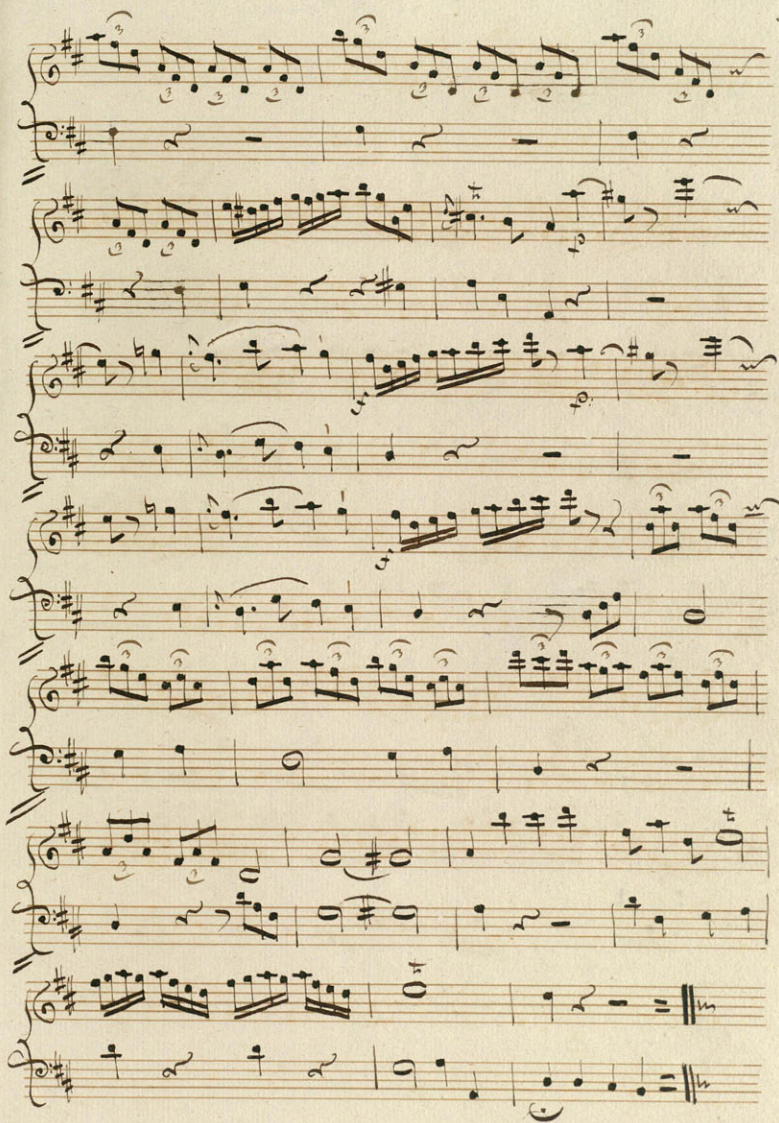
Flauto Traverso Solo

Del Sig: *Wendling**Allegro*



Volli 2^a Parte





Handwritten musical score for a piece titled "Adagio". The score is written on ten staves, with the first two staves being empty. The music begins on the third staff with a treble clef, a key signature of one sharp (F#), and a 3/8 time signature. The tempo marking "Adagio" is written in a cursive hand on the left side of the third staff. The notation includes various musical symbols such as notes, rests, beams, and slurs, indicating a complex melodic and harmonic structure. The handwriting is elegant and characteristic of 18th or 19th-century musical notation. The score concludes on the tenth staff with a double bar line.



Presto

This is a handwritten musical score for a piece marked *Presto*. The score is written on ten systems of staves, each containing a grand staff (treble and bass clefs). The key signature is one sharp (F#), and the time signature is 2/4. The notation is highly detailed, featuring numerous triplets, slurs, and dynamic markings such as *rin.* (ritardando) and *for.* (forzando). The piece begins with a treble clef and a key signature of one sharp. The first staff includes the tempo marking *Presto*. The notation is dense and expressive, with many slurs and triplets indicating a fast and technically demanding piece. The score concludes with a double bar line and repeat signs on the final staff.

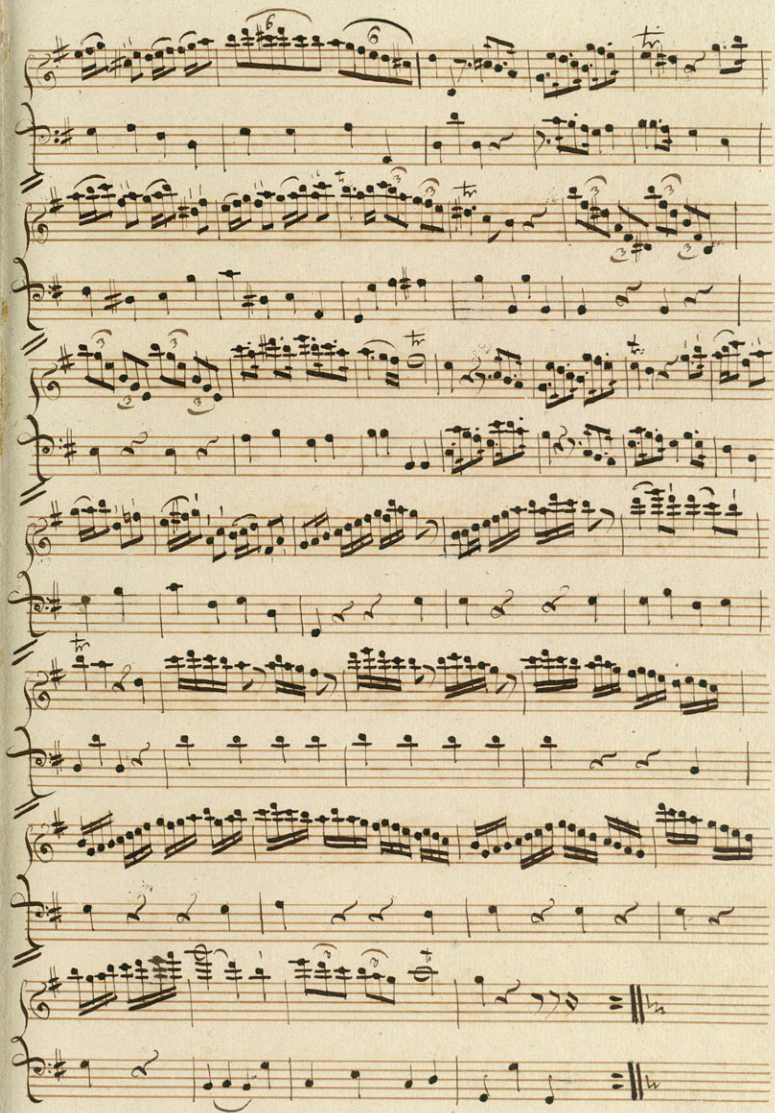
A handwritten musical score on 11 staves, likely for a piano or organ. The notation is in a single system, with each staff containing a different part of the music. The key signature is one sharp (F#), and the time signature is 2/4. The music features a variety of note values, including eighth, sixteenth, and thirty-second notes, as well as rests. There are several dynamic markings: *mf* (mezzo-forte) appears on the 5th, 7th, 9th, and 10th staves; *f* (forte) appears on the 6th staff; *tr* (trill) appears on the 6th staff; and *bis* (bis) appears on the 6th staff. The score concludes with a double bar line and repeat signs on the 10th and 11th staves.

Sonata 2

Del Sign. Wendling

Allegro

Handwritten musical score for Sonata 2 by Del Sign. Wendling, marked Allegro. The score is written on 14 staves in G major (one sharp) and 2/4 time. It features various musical notations including treble and bass clefs, key signatures, time signatures, and dynamic markings such as 'p' (piano), 'f' (forte), and 'tr' (trill). The piece concludes with a double bar line and repeat signs.



Adagio

Handwritten musical score for a piece in D major, 2/4 time, marked *Adagio*. The score consists of 12 staves. The first staff begins with a treble clef, a key signature of two sharps (F# and C#), and a 2/4 time signature. The tempo *Adagio* is written in a cursive hand. The music features a variety of note values including eighth, sixteenth, and thirty-second notes, as well as rests and accidentals. The notation is dense, with many beamed notes and slurs. The piece concludes with a double bar line on the twelfth staff.

Presto

Volti 2^a Parte

Handwritten musical score on page 14, featuring multiple staves with treble and bass clefs, key signatures of one sharp (F#), and various musical notations including notes, rests, and dynamic markings.

The score is written on 14 staves, organized into pairs of treble and bass clefs. The notation includes various note values (quarter, eighth, and sixteenth notes), rests, and dynamic markings such as *f* (forte) and *p* (piano). The music is characterized by frequent triplets and slurs, indicating complex rhythmic patterns. The final section of the score, starting around the 10th staff, includes a large section of music that has been crossed out with diagonal lines, suggesting a revision or deletion of the original composition. The piece concludes with a double bar line and repeat signs on the final staff.