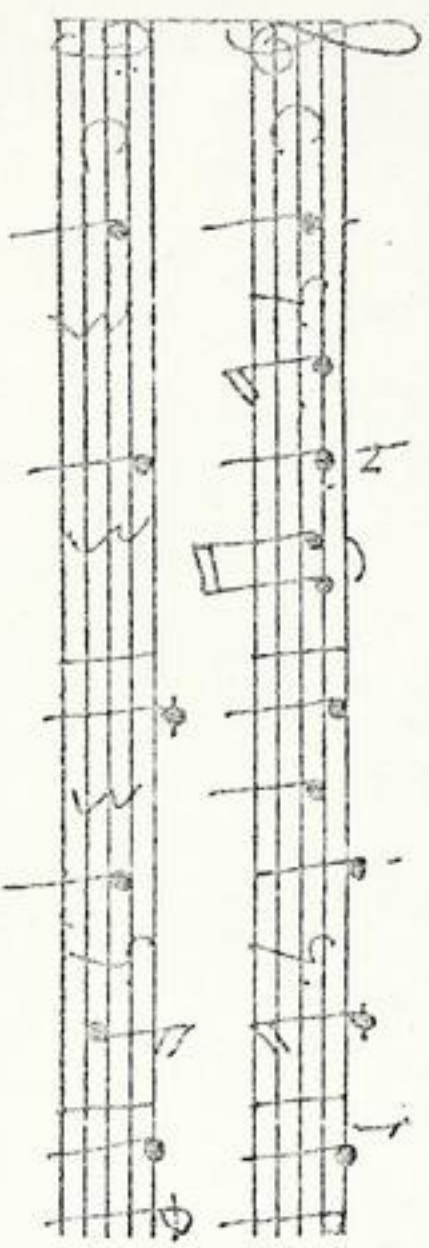


Graupner, Christoph (1683-1760) BRD DS Mus.ms 464/10  
Ouverture a 2 Violins, Viola e Cemb. / Chr. Graupner. / (C-dur)  
[Kopftitel]



[ohne Satzbez.] C/6/8 -  
Air C - Sarabande 3/2 -  
Air en Loure 6/4 - Lira.  
alternat. C - Menuet 3.  
Alle C-dur.

Autograph ca. 1730. 34,5 x 21,5 cm.

partitur: 2 Bl.

Alte Sign.: N<sup>o</sup> 10.

Flöte und Oboe in "Lira".



Mus. Ms. 464/10

No 10

c 1730.

Ouverture a 2 Viol. Viola e Cont. Chi Gagnone

Handwritten musical score for Ouverture a 2 Viol. Viola e Cont. Chi Gagnone, No 10. The score consists of three systems of staves, each with a treble and bass staff. The notation includes various rhythmic values, accidentals, and dynamic markings.

Mus 3346/x. 9. 10  
464

No 8. 9. 10.

Bl. (6)

Großherzoglich  
Hessische  
Hofbibliothek

Continuation of the handwritten musical score from the previous page, showing three systems of staves with treble and bass clefs.





Handwritten musical notation for the first system of the Ouverture, featuring four staves with various notes and rests.

Handwritten musical notation for the second system of the Ouverture, featuring four staves with various notes and rests.

Handwritten musical notation for the third system of the Ouverture, featuring four staves with various notes and rests.

Handwritten musical notation for the fourth system of the Ouverture, featuring four staves with various notes and rests.

Handwritten musical notation for the fifth system of the Ouverture, featuring four staves with various notes and rests.

Handwritten musical notation for the sixth system of the Ouverture, featuring four staves with various notes and rests.





Handwritten musical notation on a four-line staff system, featuring various rhythmic values and clefs.

Handwritten musical notation on a four-line staff system, featuring various rhythmic values and clefs.

Handwritten musical notation on a four-line staff system, featuring various rhythmic values and clefs.

Handwritten musical notation on a four-line staff system, featuring various rhythmic values and clefs.

Handwritten musical notation on a four-line staff system, featuring various rhythmic values and clefs.

Handwritten musical notation on a four-line staff system, featuring various rhythmic values and clefs.





Handwritten musical score for three staves. The notation includes various note values, rests, and clefs. The paper shows signs of age and wear.

*Sarabande*

Handwritten musical score for three staves, marked *Sarabande*. The notation features a mix of rhythmic patterns and dynamic markings such as *pp.* and *mf.*

*Arie*

Handwritten musical score for three staves, marked *Arie*. The notation includes various note values and rests, with dynamic markings like *pp.* and *mf.*

Handwritten musical score for three staves, marked *Arie en Loure*. The notation is dense with many sixteenth notes and includes dynamic markings such as *pp.* and *mf.*

*Arie en Loure*

Handwritten musical score for three staves, marked *Arie en Loure*. The notation features a mix of rhythmic patterns and rests.

Handwritten musical score for three staves, marked *Arie en Loure*. The notation includes various note values and rests, with dynamic markings like *pp.* and *mf.*



Handwritten musical notation on three staves. The first staff is in treble clef, the second in bass clef, and the third in alto clef. The music consists of rhythmic patterns and melodic lines.

*Lira. Alternat.*

Handwritten musical notation on three staves, continuing the piece. The notation includes various note values and rests.

Handwritten musical notation on three staves. The first staff is in treble clef and includes the marking *And. ff.* and *mezzo*. The second staff is in bass clef and includes the marking *ff*. The third staff is in alto clef.

Handwritten musical notation on three staves, continuing the piece.

Handwritten musical notation on three staves, continuing the piece.

*Allegro*

Handwritten musical notation on six staves. The first staff is in treble clef and includes the marking *f* and *am.*. The second staff is in bass clef and includes the marking *am.*. The third staff is in alto clef. The notation is dense and includes many sixteenth notes.

*Fine*