

ALSO PUBLISHED AS A SONG, 50c. Arranged for { BAND, ORCHESTRA,
MANDOLIN, BANJO, Etc.

CREOLE BELLES

MARCH-TWO-STEP

BY

J. BODEWALT LAMPE

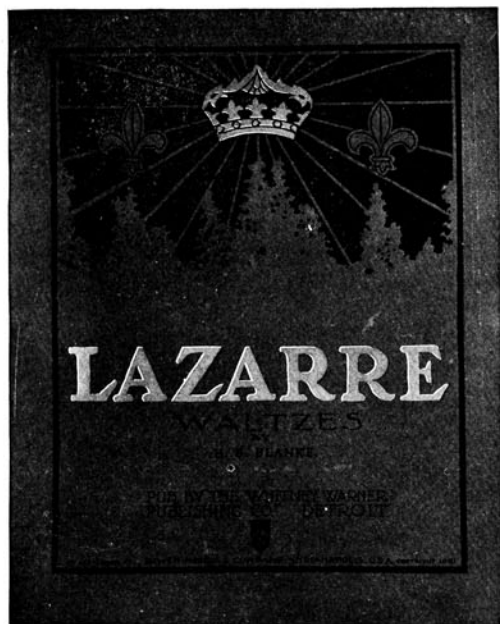
PUBLISHED BY THE

WHITNEY-WARNER
PUBLISHING CO.

DETROIT.



WALNUT ST., KANSAS CITY, MO.



Popular Compositions

—BY—

L. V. GUSTIN.



WHEN KNIGHTHOOD WAS
IN FLOWER, Waltzes,

JANICE MEREDITH, Waltzes,

VIOLA, Waltzes,

MISTRESS NELL, Waltzes,

All well written, catchy,
and not difficult.

The

**Whitney-Warner
Publishing
Company**

Detroit, Michigan

Send for Illustrated Catalogue—FREE

“Lazarre”

(WALTZES)

Below we give the introduction
and part of the first movement
to this beautiful set of waltzes.

LAZARRE.

WALTZES.

H. B. BLANKE.

Andante.

p

f

p

accel

f

Tempo di Valse.

dim.

e

rall.

p

1

Copyright 1901, by The Whitney Warner Pub Co. Detroit, Mich.

Entered According to Act of the Parliament of Canada in the year 1901 by Whaley Royce at the Department of Agriculture.

Creole Belles.

MARCH-TWO-STEP

Band 50 cts.
Orchestra 10 pts 50 cts.
Orchestra 10 pts. & Piano 65 cts.
Full Orch. 80 cts.

J. BODEWALT LAMPE.

Marcato.





Spirito.

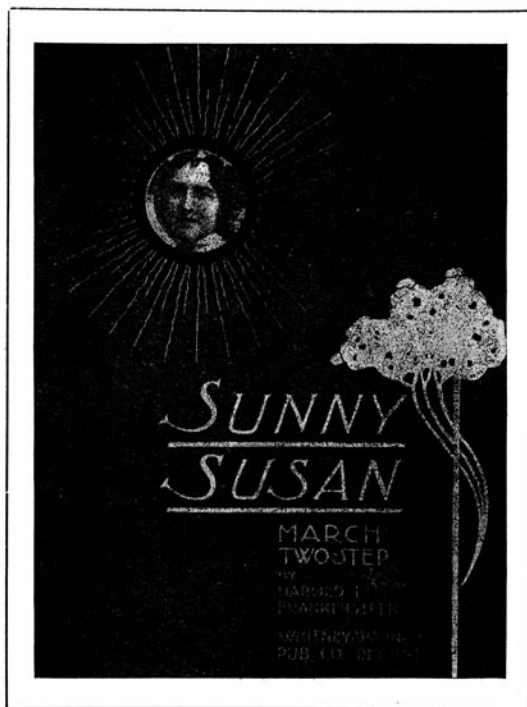
First system of piano accompaniment. The music is in 2/4 time, key of D major. The right hand features a melodic line with eighth and sixteenth notes, while the left hand provides a steady bass line with chords. A forte (*f*) dynamic marking is present at the beginning.

Second system of piano accompaniment, continuing the melodic and harmonic development of the first system.

Third system of piano accompaniment. It includes the vocal entry with the lyrics "My Cre-ole Belle,.....". The piano part features a forte (*ff*) dynamic marking and a key signature change to D minor (indicated by a double flat on the F in the bass staff).

Fourth system of piano accompaniment. It includes the vocal entry with the lyrics "I love her well,..... A-round my heart she has cast a spell..... When stars do shine,.....".

Fifth system of piano accompaniment. It includes the vocal entry with the lyrics ".....I call her mine,..... My dus-ky Ba-by, my Cre-ole Belle.....". The system concludes with a repeat sign and two endings, marked 1 and 2. A forte (*ff*) dynamic marking is present.



Sunny Susan

KINDLY try over the thematic given below and we think you will agree with us that it is one of the prettiest "Cake-Walk" Marches published. ♪ ♪ ♪ ♪ ♪

Popular Compositions

FOR PIANO.

WALTZES:

ALICE OF OLD VINCENNES
LAZARRE

JANICE MEREDITH
LOVE'S CONFESSION
VIOLA

WHEN KNIGHTHOOD WAS IN
FLOWER

MARCHES:

ELSEETA
FLIPITY FLOP
SOLDIERS OF FORTUNE
MILITARY MAID
HARUM SCARUM

If this music is not obtainable of your dealer, we will mail it to you upon receipt of 25 cents each.

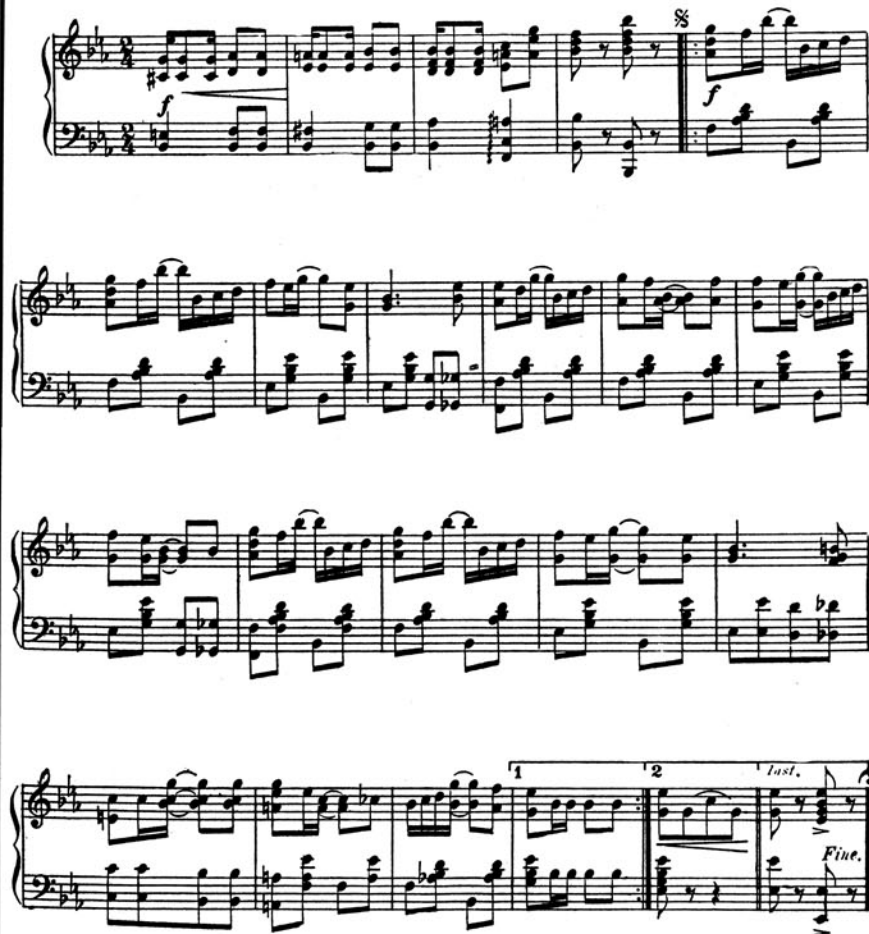
The
**WHITNEY-WARNER
PUBLISHING COM-
PANY,** Detroit, Michigan.

Illustrated Catalogue FREE.

SUNNY SUSAN

MARCH TWO STEP.
CHARACTERISTIQUE.

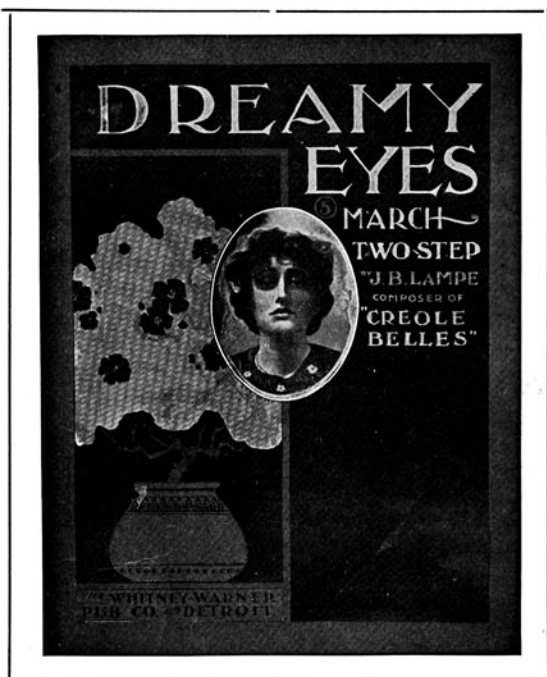
by HAROLD L. FRANKENSTEIN.



CREOLE BELLES MARCH - Musical Craze of America.

Copyright 1902, by The Whitney Warner Pub. Co. Detroit, Mich.

Entered according to Act of the Parliament of Canada in the year 1902 by Whaley Royce & Co. Limited at the Department of Agriculture,



DREAMY EYES

MARCH-TWO-STEP.

This is by the writer of **Creole Belles**, which is the most popular tune in America. Try this bit of "Dreamy Eyes." Ask your dealer for a complete copy.

DREAMY EYES.

CHARACTERISTIC MARCH AND TWO STEP.

J. BODEWALT LAMPE

Composer of

"CREOLE BELLES"

March & Two Step.

POPULAR COMPOSITIONS

CREOLE BELLES, March,

By J. Bodewalt Lampe

CLORINDA, March,

By Haines

ELSEETA, March,

By F. S. Stone

NEW ENGLAND'S FINEST,

By Herbert L. Clarke

Four great March-Two-Steps.
Well written, catchy, and not
difficult.

The
**Whitney-Warner
Publishing
Company**

Detroit, Michigan

ILLUSTRATED CATALOGUE FREE.

Anything advertised on these pages
not procurable of your music dealer
will be mailed upon receipt of 25c.



Copyright 1902, by The Whitney Warner Pub. Co. Detroit, Mich.

Entered according to Act of the Parliament of Canada in the year 1902, by Whaley Rogers at the Department of Agriculture.

