

THE DREAM IS PAST

A Song, Written by
Edward Fitz Aubyn Esq
Composed by
STEPHEN GLOVER.

Philadelphia, George Willig 171 Chesnut S^t

Andante con espressione.

Piano.

The piano introduction consists of two staves in 3/4 time with a key signature of one sharp (F#). The right hand features a series of chords and eighth notes, while the left hand plays a steady accompaniment of chords. The piece begins with a piano (*p*) dynamic and concludes with a *dim* (diminuendo) marking.

2d Verse. They cannot see the silent tear, That falls un-check'd when none are near; Nor

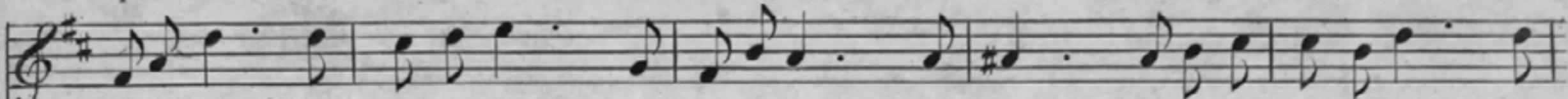
The dream is past, and with it fled, The hope that once my passion fed; And

do they mark the smother'd sigh, That leaves my breast when they are by. I know my cheek is

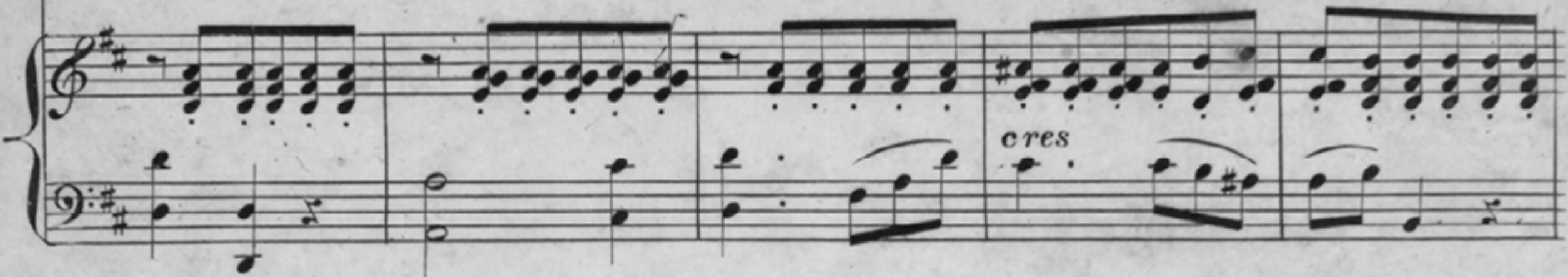
darkly die, mid grief and pain, The joys which gone come not a-gain My soul in si - - lence

The piano accompaniment for the second verse continues with the same musical style as the introduction. It features a steady accompaniment in the left hand and chords and eighth notes in the right hand. The piece concludes with a final chord in the right hand.

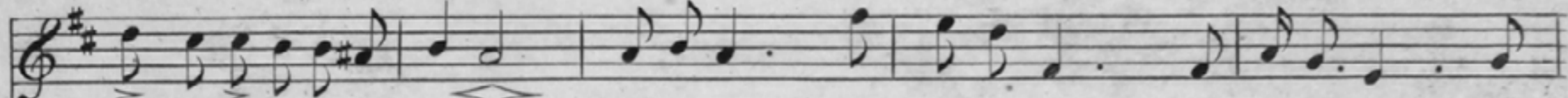
paler now, And smiles no lon - - ger deck my brow; 'Tis youth's de-cay, 'twill soon begin To



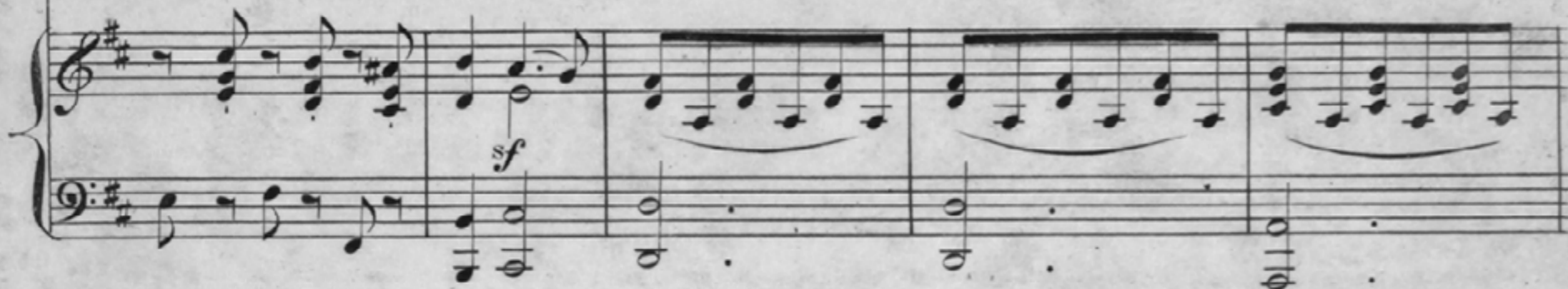
and in tears, Has cherish'd now for many years, A love for one, who does not know The



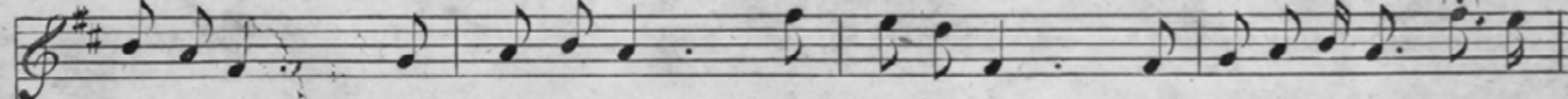
tell the thoughts that dwell within. Oh! let me rouse my sleeping pride, And from his gaze, my



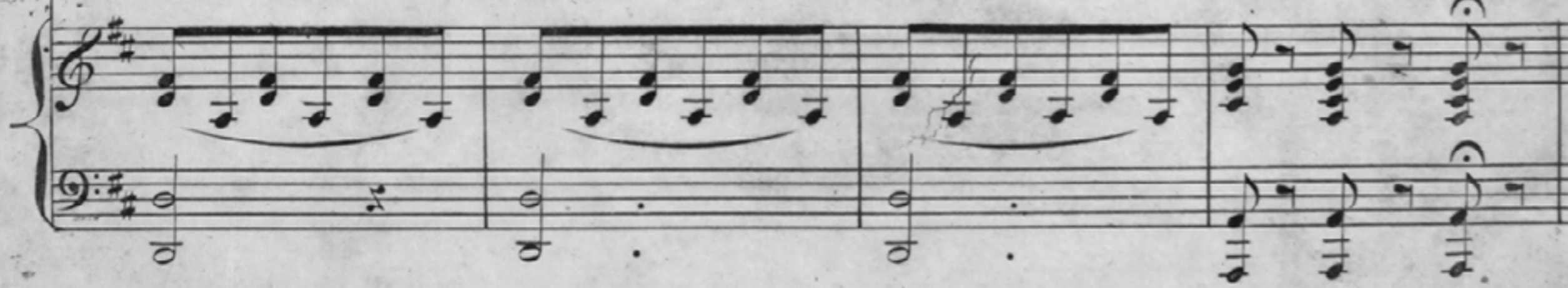
thoughts that in my bosom glow. Oh! cease my heart, thy throbbing hide A - nother soon will



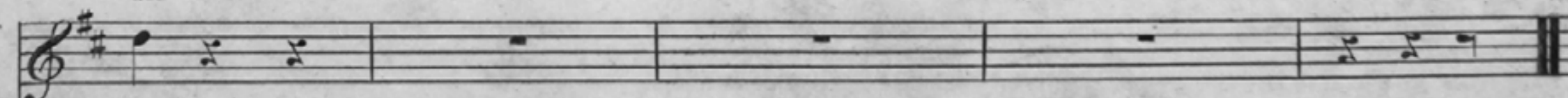
feelings hide; He shall not smile, to think that I, With love for him, could pine and



, be his bride; And hope's last faint, but cheering ray, Will then for ever pass a -



die



- way.



The dream is past.