

“Le Corsaire”  
(abridged)

Hector Berlioz

Scored for 12 trombones

arranged by

Bob Reifsnyder

Music from the

ROMANTIC BONE COLLECTION

VOLUME SIX

## About the Composer

"Le Corsaire" of Hector Berlioz (1803-69) was composed in 1844 to create another "showstopper" for his hugely successful concert tours through Europe, which were hugely successful for him both artistically and financially. Like "King Lear", it was written on a holiday in Nice, but not with a preconceived subject in mind. His first title was the fairly innocuous "Tour of Nice", but he later decided to name it "Le Corsaire Rouge" after the James Fennimore Cooper novel "Red Rover". Eventually he settled on "Le Corsaire", after the more successful Lord Byron verse of the same name.

Unlike his other concert overtures, the slow section is brief, with a melody that is also quite short in duration. This is very uncharacteristic of Berlioz, who pioneered the concept of long song-like melodies in instrumental music. The allegro finale, though, is vintage Berlioz. The melody is constantly developed, with imitation his preferred mode of expression. Also in abundance is dynamic contrast to the extreme, with several climaxes eventually leading to a rousing finish. The work is very popular with both performers and audiences to this day; after "Symphonie fantastique", "Roman Carnival" and "Hungarian March" (from Damnation of Faust), it is his fourth most frequently performed work. It is no accident that three of these come from the 1840s, which was by far his most successful period as a conductor and composer with contemporary audiences. It is important to note, however, that he remained unpopular in France, where he was a neglected musical genius for his entire career.

## About the arranger

Bob Reifsnnyder, a graduate of Interlochen Arts Academy, has two degrees from Juilliard and a Doctorate from Indiana University. As a trombone teacher, he has served on the faculties of the Juilliard Pre-College Division, Indiana University, Indiana State University, and Ithaca College. As a professional trombonist, he has been a member of the West Point band, the National Orchestra of New York, the Spoleto Festival orchestra, Goldman Band, Ringling Brothers, the German orchestras of Bielefeld, Kaiserslautern and Solingen, Terre Haute Symphony, Tri-Cities Opera, Cayuga Chamber Orchestra, Manitowoc Symphony and the Wisconsin Philharmonic. As a gig musician, he has appeared with the Metropolitan Opera, the orchestras of Wuppertal and Dusseldorf in Germany, L'Orchestre de la Suisse Romande, Chamber Orchestra of Lausanne, Fort Wayne Philharmonic, Syracuse Symphony, Binghamton Pops, Ithaca Opera, the Wisconsin orchestras of Sheboygan, Oshkosh, Green Bay and the Fox Valley Symphony.

## Notes for this arrangement

1. **Performance-** These works are designed to add to the performance repertoire of the low brass choir.
2. **Clef reading-** These arrangements will hopefully also serve as advanced clef practice for trombonists playing the top parts. It is unfortunate that clef reading skills don't seem to be a priority for many contemporary trombone teachers, but the ability to transpose at sight remains a prerequisite for becoming an excellent professional musician. Please keep in mind that the first time one has to ask a conductor for a transposed part is likely the last time one will perform with that ensemble!
3. **Scoring-** There is some octave displacement to keep the individual parts within the comfortable range of the performing instruments and to establish the alto trombone as the highest voice.
4. **Range-** The basic range of these transcriptions is from high D to low B. For each of the three quartets, the ideal mix would be alto, .525 bore tenor, .547 bore tenor and bass trombone.
5. **Breathing and Articulation-** There are no breath marks in these transcriptions; that is perhaps the most personal decision a brass player ever makes. There are, however, notes left out in extended passages that would be otherwise impossible to perform well, hopefully in the most appropriate locations. Performers are also encouraged to add slurs whenever it is deemed appropriate.

Le Corsaire

Berlioz  
Bob Reifsnnyder

$\text{♩} = 90$

*f* *f*

8

16

*f* *mf* *mp*

*rit.*  $\text{♩} = 70$

23

30

*mp dim.* *pp* *mf dim.* *p*

38

*mp* *pp*

$\text{♩} = 90$

45

*p cresc.*

53

*f* *f*

The bass line of 'The Rose Tree' is written in G major (one sharp) and 2/4 time. It begins with a treble clef and a key signature of one sharp (F#). The melody starts on a quarter note G4, followed by a quarter note A4, and then a quarter rest. The subsequent notes are G4, F#4, E4, D4, C4, B3, A3, and G3, each on a quarter note. The piece ends with a double bar line.

Musical notation for the bass line of 'The Rose Tree'. The key signature is three sharps (F#, C#, G#). The melody consists of eighth notes in the first three measures, followed by a half note, and then eighth notes in the final two measures.

[illegible]

Musical notation for the bass line of 'The Rose Tree'. The key signature is D major (two sharps). The notation shows a series of whole and half notes, with a crescendo leading to a mezzo-forte (mp) section, followed by a decrescendo (dim.) to a pianissimo (pp) section. The notes are: D2 (whole), E2 (whole), F#2 (whole), G2 (half), A2 (half), B2 (half), C3 (half), D3 (whole), E3 (whole), F#3 (whole), G3 (half), A3 (half), B3 (half), C4 (half), D4 (whole).

The musical notation for the bass staff shows five measures of whole rests, followed by four eighth notes: G2, F#2, E2, and D2. The first note has a piano (*p*) dynamic marking below it.

Musical notation for the bass line of 'The Rose Tree'. The key signature is one sharp (F#), and the time signature is 4/4. The notation consists of a single staff with a bass clef. The melody is as follows:   
 Measure 1: F#2 (quarter), G#2 (quarter), F#2 (quarter), G#2 (quarter).   
 Measure 2: A2 (half).   
 Measure 3: B2 (half).   
 Measure 4: C3 (half).   
 Measure 5: D3 (half).   
 Measure 6: E3 (half).   
 Measure 7: F#3 (half).   
 Measure 8: G#3 (half).   
 Measure 9: A3 (half).   
 Measure 10: B3 (half).   
 Measure 11: C4 (half).   
 Measure 12: D4 (half).   
 Measure 13: E4 (half).   
 Measure 14: F#4 (half).   
 Measure 15: G#4 (half).   
 Measure 16: A4 (half).   
 Measure 17: B4 (half).   
 Measure 18: C5 (half).   
 Measure 19: D5 (half).   
 Measure 20: E5 (half).   
 Measure 21: F#5 (half).   
 Measure 22: G#5 (half).   
 Measure 23: A5 (half).   
 Measure 24: B5 (half).   
 Measure 25: C6 (half).   
 Measure 26: D6 (half).   
 Measure 27: E6 (half).   
 Measure 28: F#6 (half).   
 Measure 29: G#6 (half).   
 Measure 30: A6 (half).   
 Measure 31: B6 (half).   
 Measure 32: C7 (half).   
 Measure 33: D7 (half).   
 Measure 34: E7 (half).   
 Measure 35: F#7 (half).   
 Measure 36: G#7 (half).   
 Measure 37: A7 (half).   
 Measure 38: B7 (half).   
 Measure 39: C8 (half).   
 Measure 40: D8 (half).   
 Measure 41: E8 (half).   
 Measure 42: F#8 (half).   
 Measure 43: G#8 (half).   
 Measure 44: A8 (half).   
 Measure 45: B8 (half).   
 Measure 46: C9 (half).   
 Measure 47: D9 (half).   
 Measure 48: E9 (half).   
 Measure 49: F#9 (half).   
 Measure 50: G#9 (half).   
 Measure 51: A9 (half).   
 Measure 52: B9 (half).   
 Measure 53: C10 (half).   
 Measure 54: D10 (half).   
 Measure 55: E10 (half).   
 Measure 56: F#10 (half).   
 Measure 57: G#10 (half).   
 Measure 58: A10 (half).   
 Measure 59: B10 (half).   
 Measure 60: C11 (half).   
 Measure 61: D11 (half).   
 Measure 62: E11 (half).   
 Measure 63: F#11 (half).   
 Measure 64: G#11 (half).   
 Measure 65: A11 (half).   
 Measure 66: B11 (half).   
 Measure 67: C12 (half).   
 Measure 68: D12 (half).   
 Measure 69: E12 (half).   
 Measure 70: F#12 (half).   
 Measure 71: G#12 (half).   
 Measure 72: A12 (half).   
 Measure 73: B12 (half).   
 Measure 74: C13 (half).   
 Measure 75: D13 (half).   
 Measure 76: E13 (half).   
 Measure 77: F#13 (half).   
 Measure 78: G#13 (half).   
 Measure 79: A13 (half).   
 Measure 80: B13 (half).   
 Measure 81: C14 (half).   
 Measure 82: D14 (half).   
 Measure 83: E14 (half).   
 Measure 84: F#14 (half).   
 Measure 85: G#14 (half).   
 Measure 86: A14 (half).   
 Measure 87: B14 (half).   
 Measure 88: C15 (half).   
 Measure 89: D15 (half).   
 Measure 90: E15 (half).   
 Measure 91: F#15 (half).   
 Measure 92: G#15 (half).   
 Measure 93: A15 (half).   
 Measure 94: B15 (half).   
 Measure 95: C16 (half).   
 Measure 96: D16 (half).   
 Measure 97: E16 (half).   
 Measure 98: F#16 (half).   
 Measure 99: G#16 (half).   
 Measure 100: A16 (half).   
 Measure 101: B16 (half).   
 Measure 102: C17 (half).   
 Measure 103: D17 (half).   
 Measure 104: E17 (half).   
 Measure 105: F#17 (half).   
 Measure 106: G#17 (half).   
 Measure 107: A17 (half).   
 Measure 108: B17 (half).   
 Measure 109: C18 (half).   
 Measure 110: D18 (half).   
 Measure 111: E18 (half).   
 Measure 112: F#18 (half).   
 Measure 113: G#18 (half).   
 Measure 114: A18 (half).   
 Measure 115: B18 (half).   
 Measure 116: C19 (half).   
 Measure 117: D19 (half).   
 Measure 118: E19 (half).   
 Measure 119: F#19 (half).   
 Measure 120: G#19 (half).   
 Measure 121: A19 (half).   
 Measure 122: B19 (half).   
 Measure 123: C20 (half).   
 Measure 124: D20 (half).   
 Measure 125: E20 (half).   
 Measure 126: F#20 (half).   
 Measure 127: G#20 (half).   
 Measure 128: A20 (half).   
 Measure 129: B20 (half).   
 Measure 130: C21 (half).   
 Measure 131: D21 (half).   
 Measure 132: E21 (half).   
 Measure 133: F#21 (half).   
 Measure 134: G#21 (half).   
 Measure 135: A21 (half).   
 Measure 136: B21 (half).   
 Measure 137: C22 (half).   
 Measure 138: D22 (half).   
 Measure 139: E22 (half).   
 Measure 140: F#22 (half).   
 Measure 141: G#22 (half).   
 Measure 142: A22 (half).   
 Measure 143: B22 (half).   
 Measure 144: C23 (half).   
 Measure 145: D23 (half).   
 Measure 146: E23 (half).   
 Measure 147: F#23 (half).   
 Measure 148: G#23 (half).   
 Measure 149: A23 (half).   
 Measure 150: B23 (half).   
 Measure 151: C24 (half).   
 Measure 152: D24 (half).   
 Measure 153: E24 (half).   
 Measure 154: F#24 (half).   
 Measure 155: G#24 (half).   
 Measure 156: A24 (half).   
 Measure 157: B24 (half).   
 Measure 158: C25 (half).   
 Measure 159: D25 (half).   
 Measure 160: E25 (half).   
 Measure 161: F#25 (half).   
 Measure 162: G#25 (half).   
 Measure 163: A25 (half).   
 Measure 164: B25 (half).   
 Measure 165: C26 (half).   
 Measure 166: D26 (half).   
 Measure 167: E26 (half).   
 Measure 168: F#26 (half).   
 Measure 169: G#26 (half).   
 Measure 170: A26 (half).   
 Measure 171: B26 (half).   
 Measure 172: C27 (half).   
 Measure 173: D27 (half).   
 Measure 174: E27 (half).   
 Measure 175: F#27 (half).   
 Measure 176: G#27 (half).   
 Measure 177: A27 (half).   
 Measure 178: B27 (half).   
 Measure 179: C28 (half).   
 Measure 180: D28 (half).   
 Measure 181: E28 (half).   
 Measure 182: F#28 (half).   
 Measure 183: G#28 (half).   
 Measure 184: A28 (half).   
 Measure 185: B28 (half).   
 Measure 186: C29 (half).   
 Measure 187: D29 (half).   
 Measure 188: E29 (half).   
 Measure 189: F#29 (half).   
 Measure 190: G#29 (half).   
 Measure 191: A29 (half).   
 Measure 192: B29 (half).   
 Measure 193: C30 (half).   
 Measure 194: D30 (half).   
 Measure 195: E30 (half).   
 Measure 196: F#30 (half).   
 Measure 197: G#30 (half).   
 Measure 198: A30 (half).   
 Measure 199: B30 (half).   
 Measure 200: C31 (half).   
 Measure 201: D31 (half).   
 Measure 202: E31 (half).   
 Measure 203: F#31 (half).   
 Measure 204: G#31 (half).   
 Measure 205: A31 (half).   
 Measure 206: B31 (half).   
 Measure 207: C32 (half).   
 Measure 208: D32 (half).   
 Measure 209: E32 (half).   
 Measure 210: F#32 (half).   
 Measure 211: G#32 (half).   
 Measure 212: A32 (half).   
 Measure 213: B32 (half).   
 Measure 214: C33 (half).   
 Measure 215: D33 (half).   
 Measure 216: E33 (half).   
 Measure 217: F#33 (half).   
 Measure 218: G#33 (half).   
 Measure 219: A33 (half).   
 Measure 220: B33 (half).   
 Measure 221: C34 (half).   
 Measure 222: D34 (half).   
 Measure 223: E34 (half).   
 Measure 224: F#34 (half).   
 Measure 225: G#34 (half).   
 Measure 226: A34 (half).   
 Measure 227: B34 (half).   
 Measure 228: C35 (half).   
 Measure 229: D35 (half).   
 Measure 230: E35 (half).   
 Measure 231: F#35 (half).   
 Measure 232: G#35 (half).   
 Measure 233: A35 (half).   
 Measure 234: B35 (half).   
 Measure 235: C36 (half).   
 Measure 236: D36 (half).   
 Measure 237: E36 (half).   
 Measure 238: F#36 (half).   
 Measure 239: G#36 (half).   
 Measure 240: A36 (half).   
 Measure 241: B36 (half

125

132

138

Musical notation for the bass line of 'The Rose Tree'. The key signature is three sharps (F#, C#, G#). The notation consists of six measures. The first four measures each contain a single eighth note followed by a quarter rest. The notes are F#2, C#2, G#2, and F#2 respectively. The fifth measure contains a quarter rest. The sixth measure contains a dotted quarter note F#2, an eighth note G#2, and a final double bar line. Dynamic markings are placed below the notes: *mf* under the first F#, *p* under the first C#, *mp* under the first G#, *p* under the second F#, *mf* under the dotted quarter note in the sixth measure, and *pp* under the final double bar line.

145

The bass line is written on a single staff in bass clef with a key signature of three sharps (F#, C#, G#). The tempo is marked 'Allegretto' and the time signature is 3/4. The melody consists of two measures, each containing a half note followed by a quarter note. The first measure starts with a half rest, followed by a half note G2 (marked *mf*) and a quarter note F#2 (marked *pp*). The second measure starts with a half rest, followed by a half note G2 (marked *mf*) and a quarter note F#2 (marked *pp*). The piece ends with a double bar line.

152

[illegible]

158

[illegible]

165

The bass line is written on a single staff in bass clef with a key signature of two sharps (F# and C#). It begins with a forte (*f*) dynamic and a half note G2. This is followed by a series of eighth-note chords, each preceded by a measure of rest. The dynamics shift to mezzo-piano (*mp*) for the subsequent chords. The sequence of chords (from left to right) is: F#2-G#2-A2, F#2-G#2-A2, F#2-G#2-A2, F#2-G#2-A2, F#2-G#2-A2, F#2-G#2-A2, and finally a half note C#3.

171

Musical notation for the bass line of 'The Rose Tree'. The key signature is one sharp (F#) and the time signature is 3/4. The melody consists of a series of eighth notes: F#2, G2, A2, B2, C3, D3, E3, F#3, G3, A3, B3, C4, D4, E4, F#4, G4, A4, B4, C5, D5, E5, F#5, G5, A5, B5, C6, D6, E6, F#6, G6, A6, B6, C7, D7, E7, F#7, G7, A7, B7, C8, D8, E8, F#8, G8, A8, B8, C9, D9, E9, F#9, G9, A9, B9, C10, D10, E10, F#10, G10, A10, B10, C11, D11, E11, F#11, G11, A11, B11, C12, D12, E12, F#12, G12, A12, B12, C13, D13, E13, F#13, G13, A13, B13, C14, D14, E14, F#14, G14, A14, B14, C15, D15, E15, F#15, G15, A15, B15, C16, D16, E16, F#16, G16, A16, B16, C17, D17, E17, F#17, G17, A17, B17, C18, D18, E18, F#18, G18, A18, B18, C19, D19, E19, F#19, G19, A19, B19, C20, D20, E20, F#20, G20, A20, B20, C21, D21, E21, F#21, G21, A21, B21, C22, D22, E22, F#22, G22, A22, B22, C23, D23, E23, F#23, G23, A23, B23, C24, D24, E24, F#24, G24, A24, B24, C25, D25, E25, F#25, G25, A25, B25, C26, D26, E26, F#26, G26, A26, B26, C27, D27, E27, F#27, G27, A27, B27, C28, D28, E28, F#28, G28, A28, B28, C29, D29, E29, F#29, G29, A29, B29, C30, D30, E30, F#30, G30, A30, B30, C31, D31, E31, F#31, G31, A31, B31, C32, D32, E32, F#32, G32, A32, B32, C33, D33, E33, F#33, G33, A33, B33, C34, D34, E34, F#34, G34, A34, B34, C35, D35, E35, F#35, G35, A35, B35, C36, D36, E36, F#36, G36, A36, B36, C37, D37, E37, F#37, G37, A37, B37, C38, D38, E38, F#38, G38, A38, B38, C39, D39, E39, F#39, G39, A39, B39, C40, D40, E40, F#40, G40, A40, B40, C41, D41, E41, F#41, G41, A41, B41, C42, D42, E42, F#42, G42, A42, B42, C43, D43, E43, F#43, G43, A43, B43, C44, D44, E44, F#44, G44, A44, B44, C45, D45, E45, F#45, G45, A45, B45, C46, D46, E46, F#46, G46, A46, B46, C47, D47, E47, F#47, G47, A47, B47, C48, D48, E48, F#48, G48, A48, B48, C49, D49, E49, F#49, G49, A49, B49, C50, D50, E50, F#50, G50, A50, B50, C51, D51, E51, F#51, G51, A51, B51, C52, D52, E52, F#52, G52, A52, B52, C53, D53, E53, F#53, G53, A53, B53, C54, D54, E54, F#54, G54, A54, B54, C55, D55, E55, F#55, G55, A55, B55, C56, D56, E56, F#56, G56, A56, B56, C57, D57, E57, F#57, G57, A57, B57, C58, D58, E58, F#58, G58, A58, B58, C59, D59, E59, F#59, G59, A59, B59, C60, D60, E60, F#60, G60, A60, B60, C61, D61, E61, F#61, G61, A61, B61, C62, D62, E62, F#62, G62, A62, B62, C63, D63, E63, F#63, G63, A63, B63, C64, D64, E64, F#64, G64, A64, B64, C65, D65, E65, F#65, G65, A65, B65, C66, D66, E66, F#66, G66, A66, B66, C67, D67, E67, F#67, G67, A67, B67, C68, D68, E68, F#68, G68, A68, B68, C69, D69, E69, F#69, G69, A69, B69, C70, D70, E70, F#70, G70, A70, B70, C71, D71, E71, F#71, G71, A71, B71, C72, D72, E72, F#72, G72, A72, B72, C73, D73, E73, F#73, G73, A73, B73, C74, D74, E74, F#74, G74, A74, B74, C75, D75, E75, F#75, G75, A75, B75, C76, D76, E76, F#76, G76, A76, B76, C77, D77, E77, F#77, G77, A77, B77, C78, D78, E78, F#78, G78, A78, B78, C79, D79, E79, F#79, G79, A79, B79, C80, D80, E80, F#80, G80, A80, B80, C81, D81, E81, F#81, G81, A81, B81, C82, D82, E82, F#82, G82, A82, B82, C83, D83, E83, F#83, G83, A83, B83, C84, D84, E84, F#84, G84, A84, B84, C85, D85, E85, F#85, G85, A85, B85, C86, D86, E86, F#86, G86, A86, B86, C87, D87, E87, F#87, G87, A87, B87, C88, D88, E88, F#88, G88, A88, B88, C89, D89, E89, F#89, G89, A89, B89, C90, D90, E90, F#90, G90, A90, B90, C91, D91, E91, F#91, G91, A91, B91, C92, D92, E92, F#92, G92, A92, B92, C93, D93, E93, F#93, G93, A93, B93, C94, D94, E94, F#94, G94, A94, B94, C95, D95, E95, F#95, G95, A95, B95, C96, D96, E96, F#96, G96, A96, B96, C97, D97, E97, F#97, G97, A97, B97, C98, D98, E98, F#98, G98, A98, B98, C99, D99, E99, F#99, G99, A99, B99, C100, D100, E100, F#100, G100, A100, B100, C101, D101, E101, F#101, G101, A101, B101, C102, D102, E102, F#102, G102, A102, B102, C103, D103, E103, F#103, G103, A103, B103, C104, D104, E104, F#104, G104, A104, B104, C105, D105, E105, F#105, G105, A105, B105, C106, D106, E106, F#106, G106, A106, B106, C107, D107, E107, F#107, G107, A107, B107, C108, D108, E108, F#108, G108, A108, B108, C109, D109, E109, F#109, G109, A109, B109, C110, D110, E110, F#110, G110, A110, B110, C111, D111, E111, F#111, G111, A111, B111, C112, D112, E112, F#112, G112, A112, B112, C113, D113, E113, F#113, G113, A113, B113, C114, D114, E114, F#114, G114, A114, B114, C115, D115, E115, F#115, G115, A115, B115, C116, D116, E116, F#116, G116, A116, B116, C117, D117, E117, F#117, G117, A117, B117, C118, D118, E118, F#118, G118, A118, B118, C119, D119, E119, F#119, G119, A119, B119, C120, D120, E120, F#120, G120, A120, B120, C121, D121, E121, F#121, G121, A121, B121, C122, D122, E122, F#122, G122, A122, B122, C123, D123, E123, F#123, G123, A123, B123, C124, D124, E124, F#124, G124, A124, B124, C125, D125, E125, F#125, G125, A125, B125, C126, D126, E126, F#126, G126, A126, B126, C127, D127, E127, F#127, G127, A127, B127, C128, D128, E128, F#128, G128, A128, B128, C129, D129, E129, F#129, G129, A129, B129, C130, D130, E130, F#130, G130, A130, B130, C131, D131, E131, F#131, G131, A131, B131, C132, D132, E132, F#132, G132, A132, B132, C133, D133, E133, F#133, G133, A133, B133, C134, D134, E134, F#134, G134, A134,

178

Musical notation for the bass line of 'The Rose Tree'. The staff is in bass clef with a key signature of one sharp (F#). The melody consists of a series of eighth notes: F#2, G#2, A2, B2, C3, D3, E3, F#3, G#3, A3, B3, C4, D4, E4, F#4, G#4, A4, B4, C5, D5, E5, F#5, G#5, A5, B5, C6, D6, E6, F#6, G#6, A6, B6, C7, D7, E7, F#7, G#7, A7, B7, C8, D8, E8, F#8, G#8, A8, B8, C9, D9, E9, F#9, G#9, A9, B9, C10, D10, E10, F#10, G#10, A10, B10, C11, D11, E11, F#11, G#11, A11, B11, C12, D12, E12, F#12, G#12, A12, B12, C13, D13, E13, F#13, G#13, A13, B13, C14, D14, E14, F#14, G#14, A14, B14, C15, D15, E15, F#15, G#15, A15, B15, C16, D16, E16, F#16, G#16, A16, B16, C17, D17, E17, F#17, G#17, A17, B17, C18, D18, E18, F#18, G#18, A18, B18, C19, D19, E19, F#19, G#19, A19, B19, C20, D20, E20, F#20, G#20, A20, B20, C21, D21, E21, F#21, G#21, A21, B21, C22, D22, E22, F#22, G#22, A22, B22, C23, D23, E23, F#23, G#23, A23, B23, C24, D24, E24, F#24, G#24, A24, B24, C25, D25, E25, F#25, G#25, A25, B25, C26, D26, E26, F#26, G#26, A26, B26, C27, D27, E27, F#27, G#27, A27, B27, C28, D28, E28, F#28, G#28, A28, B28, C29, D29, E29, F#29, G#29, A29, B29, C30, D30, E30, F#30, G#30, A30, B30, C31, D31, E31, F#31, G#31, A31, B31, C32, D32, E32, F#32, G#32, A32, B32, C33, D33, E33, F#33, G#33, A33, B33, C34, D34, E34, F#34, G#34, A34, B34, C35, D35, E35, F#35, G#35, A35, B35, C36, D36, E36, F#36, G#36, A36, B36, C37, D37, E37, F#37, G#37, A37, B37, C38, D38, E38, F#38, G#38, A38, B38, C39, D39, E39, F#39, G#39, A39, B39, C40, D40, E40, F#40, G#40, A40, B40, C41, D41, E41, F#41, G#41, A41, B41, C42, D42, E42, F#42, G#42, A42, B42, C43, D43, E43, F#43, G#43, A43, B43, C44, D44, E44, F#44, G#44, A44, B44, C45, D45, E45, F#45, G#45, A45, B45, C46, D46, E46, F#46, G#46, A46, B46, C47, D47, E47, F#47, G#47, A47, B47, C48, D48, E48, F#48, G#48, A48, B48, C49, D49, E49, F#49, G#49, A49, B49, C50, D50, E50, F#50, G#50, A50, B50, C51, D51, E51, F#51, G#51, A51, B51, C52, D52, E52, F#52, G#52, A52, B52, C53, D53, E53, F#53, G#53, A53, B53, C54, D54, E54, F#54, G#54, A54, B54, C55, D55, E55, F#55, G#55, A55, B55, C56, D56, E56, F#56, G#56, A56, B56, C57, D57, E57, F#57, G#57, A57, B57, C58, D58, E58, F#58, G#58, A58, B58, C59, D59, E59, F#59, G#59, A59, B59, C60, D60, E60, F#60, G#60, A60, B60, C61, D61, E61, F#61, G#61, A61, B61, C62, D62, E62, F#62, G#62, A62, B62, C63, D63, E63, F#63, G#63, A63, B63, C64, D64, E64, F#64, G#64, A64, B64, C65, D65, E65, F#65, G#65, A65, B65, C66, D66, E66, F#66, G#66, A66, B66, C67, D67, E67, F#67, G#67, A67, B67, C68, D68, E68, F#68, G#68, A68, B68, C69, D69, E69, F#69, G#69, A69, B69, C70, D70, E70, F#70, G#70, A70, B70, C71, D71, E71, F#71, G#71, A71, B71, C72, D72, E72, F#72, G#72, A72, B72, C73, D73, E73, F#73, G#73, A73, B73, C74, D74, E74, F#74, G#74, A74, B74, C75, D75, E75, F#75, G#75, A75, B75, C76, D76, E76, F#76, G#76, A76, B76, C77, D77, E77, F#77, G#77, A77, B77, C78, D78, E78, F#78, G#78, A78, B78, C79, D79, E79, F#79, G#79, A79, B79, C80, D80, E80, F#80, G#80, A80, B80, C81, D81, E81, F#81, G#81, A81, B81, C82, D82, E82, F#82, G#82, A82, B82, C83, D83, E83, F#83, G#83, A83, B83, C84, D84, E84, F#84, G#84, A84, B84, C85, D85, E85, F#85, G#85, A85, B85, C86, D86, E86, F#86, G#86, A86, B86, C87, D87, E87, F#87, G#87, A87, B87, C88, D88, E88, F#88, G#88, A88, B88, C89, D89, E89, F#89, G#89, A89, B89, C90, D90, E90, F#90, G#90, A90, B90, C91, D91, E91, F#91, G#91, A91, B91, C92, D92, E92, F#92, G#92, A92, B92, C93, D93, E93, F#93, G#93, A93, B93, C94, D94, E94, F#94, G#94, A94, B94, C95, D95, E95, F#95, G#95, A95, B95, C96, D96, E96, F#96, G#96, A96, B96, C97, D97, E97, F#97, G#97, A97, B97, C98, D98, E98, F#98, G#98, A98, B98, C99, D99, E99, F#99, G#99, A99, B99, C100, D100, E100, F#100, G#100, A100, B100, C101, D101, E101, F#101, G#101, A101, B101, C102, D102, E102, F#102, G#102, A102, B102, C103, D103, E103, F#103, G#103, A103, B103, C104, D104, E104, F#104, G#104, A104, B104, C105, D105, E105, F#105, G#105, A105, B105, C106, D106, E106, F#106, G#106, A106, B106, C107, D107, E107, F#107, G#107, A107, B107, C108, D108, E108, F#108, G#108, A108, B108, C109, D109, E109, F#109, G#109, A109, B109, C110, D110, E110, F#110, G#110, A110, B110, C111, D111, E111, F#111, G#111, A111, B111, C112, D112, E112, F#112, G#112, A112, B112, C113, D113, E113, F#113, G#113, A113, B113, C114, D114, E114, F#114, G#114, A114, B114, C115, D115, E115, F#115, G#115, A115, B115, C116, D116, E116, F#116, G#116, A116, B116, C117, D117, E117, F#117, G#117, A117, B117, C118, D118, E118, F#118, G#118, A118, B118, C119, D119, E119, F#119, G#119, A119, B119, C120, D120, E120, F#120, G#120, A120, B120, C121, D121, E121, F#121, G#121, A121, B121, C122, D122, E122, F#122, G#122, A122, B122, C123, D123, E123, F#123, G#123, A123, B123, C124, D124, E124, F#124, G#124, A124, B124, C125, D125, E125, F#125, G#125, A125, B125, C126, D126, E126, F#126, G#126, A126, B126, C127, D127, E127, F#127, G#127, A127, B127, C128, D128, E128, F#128, G#128, A128, B128, C129, D129, E129, F#129, G#129, A129, B129, C130, D130, E130, F#130, G#130, A130, B130, C131, D131, E1

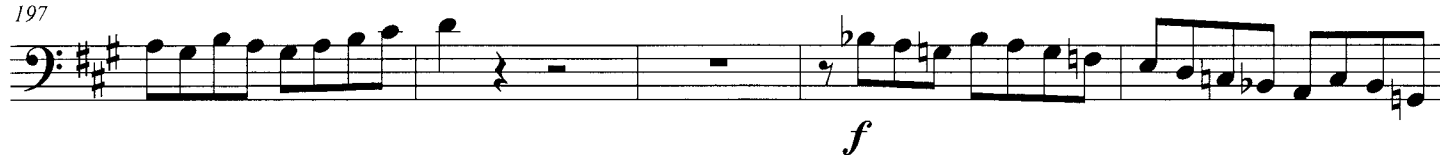
185



192



197



202



206



212



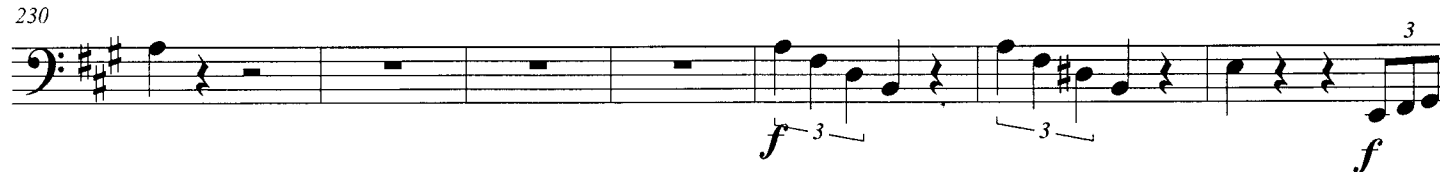
218



224



230



237



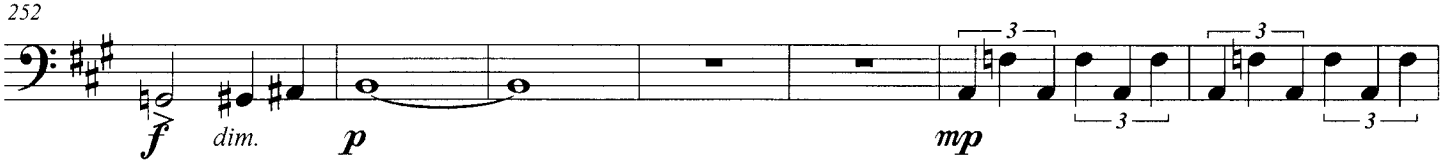
242



247



252



259



264



271



278



284

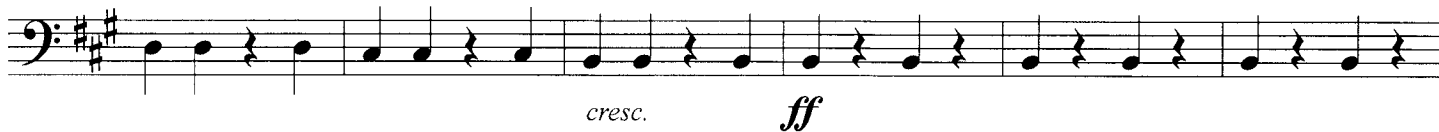




291



297



303



309



315



322



329



335



340

