

Violino II

STRING QUARTET N°6

"MULDENQUARTETT"

Durata 29 min.

for 2 Violins, Viola and Cello

Op.119 (1999)

Andante ♩ = 66

Vahram BABAYAN

14

1 Vln.I

pp

19

pp

22

pp

25

p

pp

29

p

pp

2 ampio e poco appassionato

risoluto

mp

ff

3 Sostenuto ♩ = 76

50 *parlando*
pizz.
p *mf*

54 *p* *mf*

58 *p*

4 **Misterioso**
2 *arco* (1) (2) (3)
p

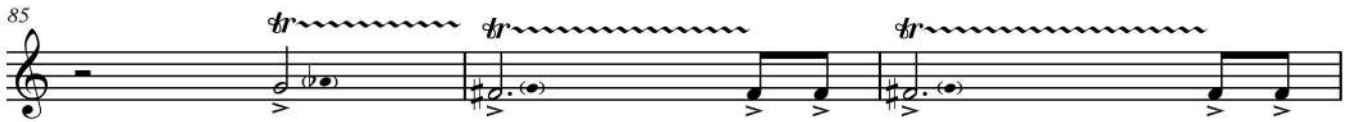
67 (4) (5) (6) (7)

71 (8) (9) (10)
mp

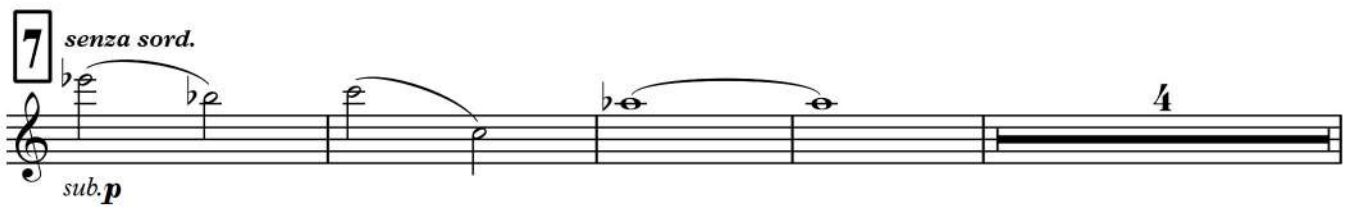
74 2 *vibr.* *molto vibr.*
p

5 **Con fuoco**
ord. tr *f* *tr* *tr*

82 *tr* *tr* *tr*



6 Andante ♩ = 66
generoso e pittoresco



8 ricordanza



119 **affannato**



p

121

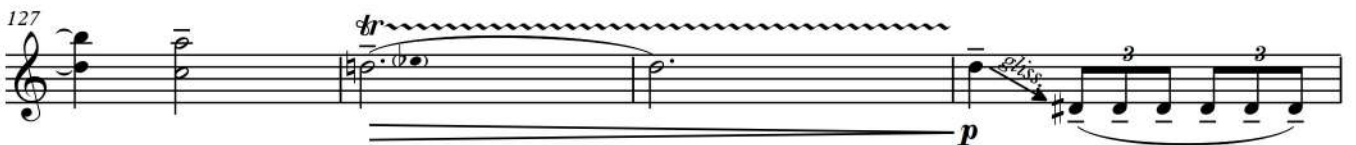


mp *p*



mf

127



p


10

130



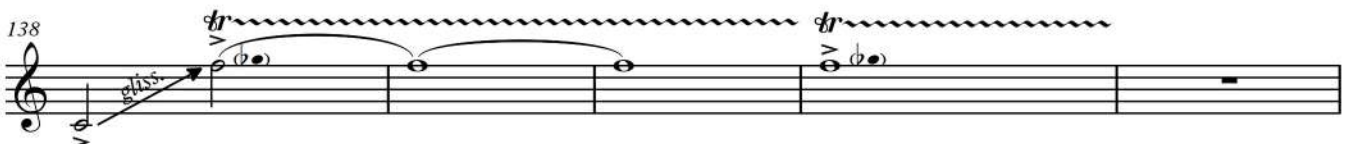
p

134



f

138



f

11

143



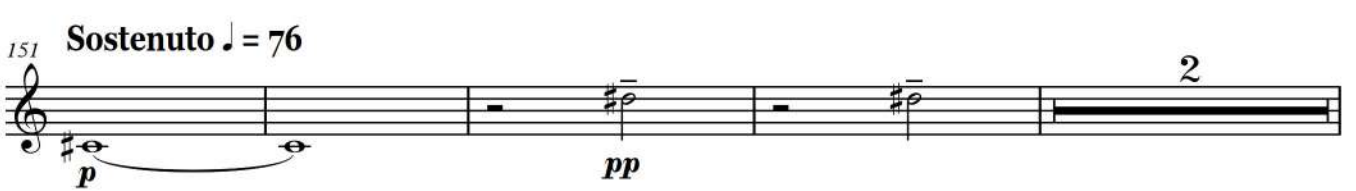
f

147



f rit.

151 **Sostenuto** ♩ = 76



p *pp* 2

224 *sfz sfz sfz sfz sfz sfz sfz sfz*

226

228 **17**

231 *scorrendo e pittoresco*

p mp

237 **18** *licenza e estatico*

f

241 *cresc.*

245 *molto cresc.*

ff sfz

19 *dolce, sussurando*

p mp

252 *p mp p mp*

255 *p mp p mp*

258 *p mf p*

262 **20** *scorrendo e pittoresco*

265

p

269

mp

21 pastorale

sotto voce

p

274

276

cresc.

278

mf

280

mp *p* *mp* 9

22

mf *gliss.* *gliss.* *cresc.*

286

f *con fuoco e elevato*

291

cresc.

295

ff

23 Allegretto ma energico ♩ = 96

298

sub.p *f marcatisissimo*

301

303

305

307

309

sfz sfz sfz sfz sfz

24

313

sfz sfz sfz sfz

315

sfz sfz sfz sfz sfz sfz sfz sfz

317

25

319

p

321

Molto allegro ♩ = 146
ingegnoso, ironico

323 *pizz.*
p

326 *cresc.*

329 *f*

332

26 *arco*
poco marcato

341 *p*

344 *mf*

348 *f*

3

27 *pizz.*
p

355 *cresc.*

358 *f*

361

365 *arco*
tr
ffsfz

28 Allegretto ma energico ♩ = 96

368 (tr) *sfz*

f marcatisimo

370

372

374

376 *sfz sfz sfz sfz sfz*

378 *sfz sfz sfz sfz*

29

382 *sfz sfz sfz sfz*

384 *sfz sfz sfz sfz sfz sfz sfz sfz*

386

388

390

392 *tr* *sfz* **30** *cresc.*

395 **trionfale, alla marcia** *sfz* *ff*

400 **furioso, vertiginoso** *sfz* *gliss.* *molto cresc.*

31 **Maestoso e tenace** ♩ = 76

405 *sffz* *sffz* *sffz* *sffz* *sffz* *sffz* *fff*

410 *sffz* *sffz* *sfz* *sffz* **tragico e rigoroso** *sffz* *sffz* **sonore**

417 *sffz* *sffz* *sffz* *sffz*

423 *sffz* *sffz* *sffz*

32 **Andantino** ♩ = 66
senza metrum

p

33

Vln. I

p *mp*

440 (tr)

sfz *p* *sfz* *sfz*

sub.f *sub.f* *sub.f*

34 Cadenza

p *mp* *p* non legato (détaché)

443

p *mp* *p* *sfz*

sub.f

444

mf *p* *p* *sfz*

sub.f

446 non legato (détaché)

p

35

sub.f *p* *sfz*

sub.f

Violino II staff with treble clef, key signature of one sharp (F#), and time signature of 3/4. The staff contains a whole note chord of G4 and B4. A diagonal line labeled *gliss.* points from the G4 note down to the B4 note. The instruction *sul pont.* is written above the staff. The dynamic marking *p* is below the staff.

Violino II staff (449) and Viola staff (Vla.). The Violino II staff has a whole note chord of G4 and B4. The Viola staff contains a melodic line starting with a whole note chord of G4 and B4, followed by a series of eighth notes: G4, F#4, E4, D4, C4, B3, A3, G3. A box highlights the first four notes (G4, F#4, E4, D4). The dynamic marking *p* is below the Viola staff.

Violino II staff (36-37) and Viola staff. The Violino II staff has a whole note chord of G4 and B4. The Viola staff contains a complex melodic line with various dynamics: *sub.f*, *p*, *mp*, *mf*, *p*, *sub.f*, *p*. It includes a triplet of eighth notes and a *gliss.* marking. Boxed numbers 36 and 37 are present.

Violino II staff (452) with a whole note chord of G4 and B4.

Violino II staff (453) with a whole note chord of G4 and B4. The Viola staff (Vc.) contains a melodic line starting with a whole note chord of G4 and B4, followed by a triplet of eighth notes: G4, F#4, E4. The dynamic marking *p* is below the Viola staff, with the instruction *non legato (détaché)*.

Violino II staff (454) and Viola staff. The Violino II staff has a whole note chord of G4 and B4 with a wavy line labeled *vibr.* above it. The dynamic marking *mp* is below the staff. The Viola staff contains a melodic line starting with a whole note chord of G4 and B4, followed by a *gliss.* marking. The dynamic marking *p* is below the staff.

38

gliss. ord. *p* *f* *sfz* *sfz* *sfz* *sfz* *sfz* *sfz* *sfz* *sfz*

Vla. *p* Vc. *f*

461

470 *acuto* *pizz.* *mp* *mf* *f* *risonante*

39 *soffice con sord. arco* *p* *p* *pp* *sul pont. (1)* *(2)* *(3)*

485 *(4)* *(5)* *(6)* *(7)* *(8)* *G.P.*

40 *senza sord. ord.* *pp*

498 *mp* *pp*

41 *Moderato* ♩ = 86 *indolente* 2

504 *p*

511 *col legno* rit.



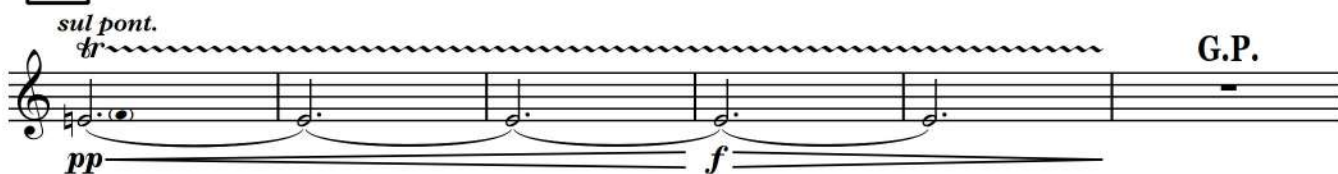
Andante ♩ = 66
ricordanza

516 *ord.*



42

sul pont. *tr* G.P.



sognando

529 *ord.* 15" → ∞

