

# Cello Part for Exile

## Interlude 2

Malcolm Hill mj373.2

445  $\text{♩} = 60$

Violoncello *mp*

450

456

459

463

469

473

478

484 *mf*

488 *(mf)*

$\text{♩} = 60$

716

Violoncello

Violoncello staff for measures 716-718. Measure 716 starts with a bass clef, a key signature of one sharp (F#), and a dynamic marking of *p*. The melody consists of quarter notes: F#2, G2, A2, B2, C3, D3, E3, F#3. Measure 717 continues with G3, A3, B3, C4, D4, E4, F#4, G4. Measure 718 features a triplet of eighth notes: G4, A4, B4, followed by a quarter note C5.

719

Violoncello staff for measures 719-721. Measure 719 has a whole rest. Measure 720 has a whole rest. Measure 721 features a triplet of eighth notes: G4, A4, B4, followed by a quarter note C5.

722

Violoncello staff for measures 722-725. Measure 722 has a quarter note G4, quarter note A4, quarter note B4, quarter note C5. Measure 723 has a quarter note D5, quarter note E5, quarter note F#5, quarter note G5. Measure 724 has a quarter note G5, quarter note F#5, quarter note E5, quarter note D5. Measure 725 has a whole rest.

726

Violoncello staff for measures 726-730. Measure 726 has a whole rest. Measure 727 has a whole rest. Measure 728 has a quarter note G4, quarter note A4, quarter note B4, quarter note C5. Measure 729 has a quarter note D5, quarter note E5, quarter note F#5, quarter note G5. Measure 730 has a quarter note G5, quarter note F#5, quarter note E5, quarter note D5. Dynamic marking *mp* is present.

731

Violoncello staff for measures 731-733. Measure 731 has a quarter note G4, quarter note A4, quarter note B4, quarter note C5. Measure 732 has a quarter note D5, quarter note E5, quarter note F#5, quarter note G5. Measure 733 features a triplet of eighth notes: G5, A5, B5, followed by a quarter note C6.

734

Violoncello staff for measures 734-736. Measure 734 has a quarter note G4, quarter note A4, quarter note B4, quarter note C5. Measure 735 has a quarter note D5, quarter note E5, quarter note F#5, quarter note G5. Measure 736 has a quarter note G5, quarter note F#5, quarter note E5, quarter note D5. Dynamic marking *mf* is present.

737

Violoncello staff for measures 737-738. Measure 737 features a triplet of eighth notes: G5, A5, B5, followed by a quarter note C6. Measure 738 has a quarter note D6, quarter note E6, quarter note F#6, quarter note G6. Dynamic marking *mp* is present.

739

Violoncello staff for measures 739-740. Measure 739 has a quarter note G5, quarter note A5, quarter note B5, quarter note C6. Measure 740 has a quarter note D6, quarter note E6, quarter note F#6, quarter note G6.

741

Violoncello staff for measures 741-742. Measure 741 has a quarter note G5, quarter note A5, quarter note B5, quarter note C6. Measure 742 has a quarter note D6, quarter note E6, quarter note F#6, quarter note G6.

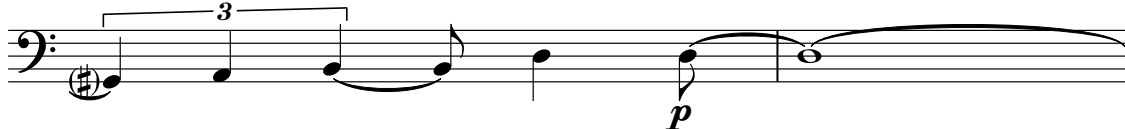
743

Violoncello staff for measures 743-744. Measure 743 has a quarter note G5, quarter note A5, quarter note B5, quarter note C6. Measure 744 has a quarter note D6, quarter note E6, quarter note F#6, quarter note G6.

746



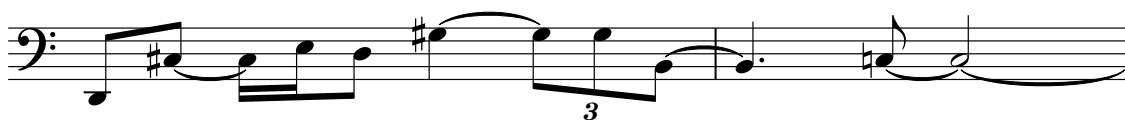
749



751



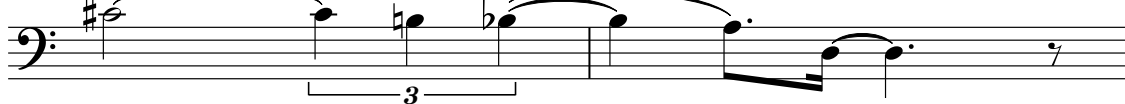
754



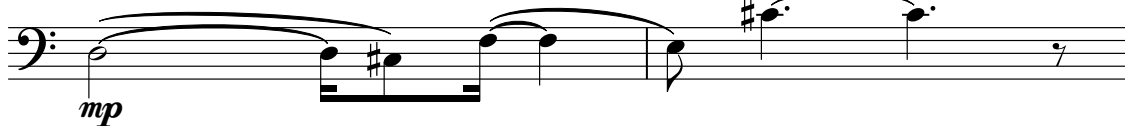
756



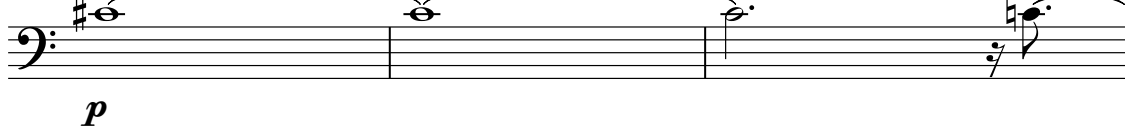
758



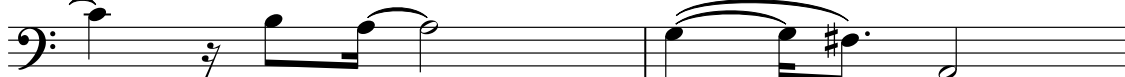
760



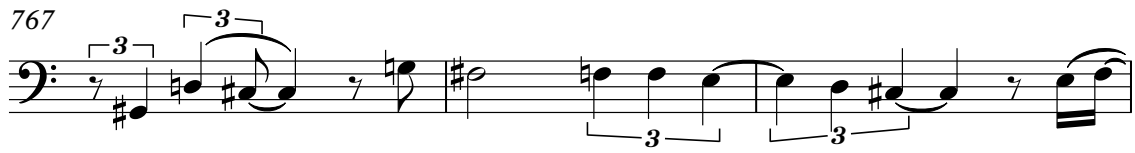
762



765



767



770



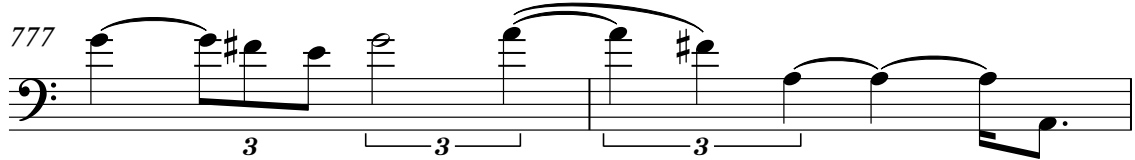
773



775



777



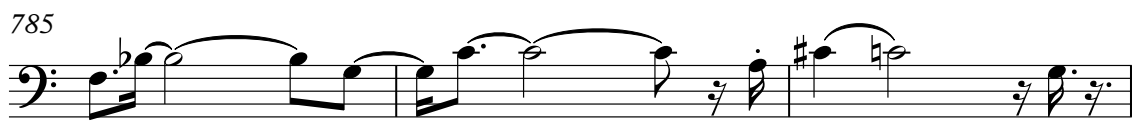
779



782



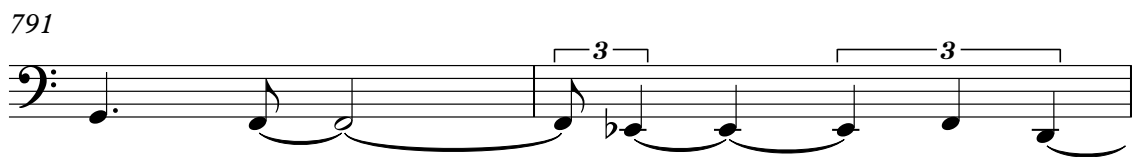
785



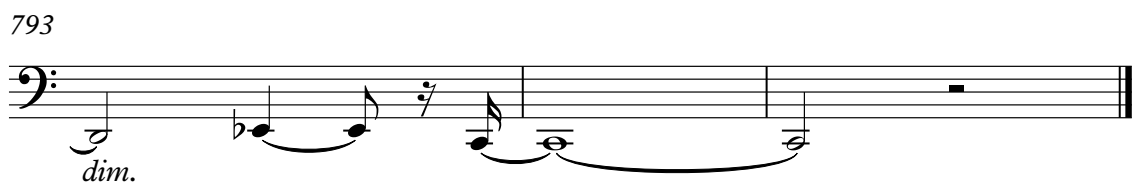
788



791



793



*dim.*

Interlude 5

♩. = 52  
852 Sonore

Violoncello

852 *f*



855



858 *mf*



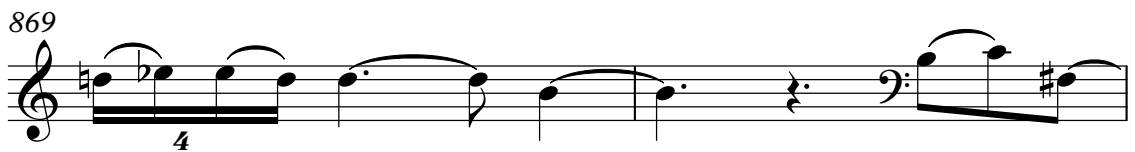
862 *ff*



865 *f*



869



871



874 *mf*



877

Musical notation for measure 877, bass clef. The key signature has one sharp (F#). The measure contains a sequence of eighth and quarter notes with various accidentals (sharps, naturals, flats). The dynamic marking is *mp* (mezzo-piano).

881

Musical notation for measure 881, bass clef. The key signature has one sharp (F#). The measure contains a sequence of quarter and eighth notes with various accidentals. The dynamic markings are *pp* (pianissimo) and *p* (piano).

885

Musical notation for measure 885, bass clef. The key signature has one sharp (F#). The measure contains a sequence of quarter and eighth notes with various accidentals and slurs. The dynamic marking is *pp* (pianissimo).

888

Musical notation for measure 888, bass clef. The key signature has one sharp (F#). The measure contains a sequence of quarter and eighth notes with various accidentals.

890

Musical notation for measure 890, bass clef. The key signature has one sharp (F#). The measure contains a sequence of quarter and eighth notes with various accidentals, ending with a double bar line.

Interlude 7

1093  $\text{♩} = 60$

Violoncello

*f*

1095

1098

*mf*

1102

*ff* *mp* *mf*

1105

*p* *mf* *p*

1108

*pp* *mf*

1112

*mp* *cresc.* *f*

1115

3

1118

5 3 *dim.*

1120

1122 *sonore*

1122 *f*

1126

1126 *p f*

1130

1130 *cresc.*

1133

1133 *ff*

1136

1136 *f pizz.3*

1139

1139 *mf mp mf p*

1142

1142 *f arco*

1145

1145 *p f*

1148

1148 *mp p*

1152

1152 *senza dim.*



# Interlude 8

1349  $\text{♩}=54$

Vc.  $\text{pizz. } f$   $\text{arco } f$

1352  $mp$

1357  $\text{pizz. } mf$   $\text{rit.}$   $\text{arco } mp$   $\text{nat. } pp$   $\text{♩}=96$

1371  $\text{arco } sf$   $fp$

1377  $mp$   $\text{sempre}$

1381  $\text{pizz. } mp$

1391  $\text{pizz. } mp$

1394  $p$   $\text{arco } p$

1396  $\text{pizz. } pp$   $\text{arco senza vib. } pp$   $\text{nat. } pp$

1399  $pp$