

SONATE

a Violino, Violone, e Cembalo,

DEDICATE

Al Illustrissimo et Excellentissimo Signore

IL SIG.^r BARONE DI KILMANS' EGGE

Cavallerizzo Maggiore e Ciamberlano

Di sua Maestà Britanica

e Elettore di Brunswick e Lunebourg

Da

FRANCESCO GEMINIANI

OPERA PRIMA

A AMSTERDAM

CHEZ JEANNE ROGER

Sonata Op.1 no.1

Francesco Geminiani

Adagio

Presto



19 **Adagio**



23 **Presto**



30 **Adagio**



34



1 **Allegro**



10



18



24



30



39



47



57



66



74



83



94



102



108

Adagio



Grave



Allegro



Sonata Op.1 no.2

Adagio

Musical score for the Adagio section, measures 1 through 11. The music is written in bass clef with a common time signature (C). It features a series of eighth and sixteenth notes, with some accidentals (flats and sharps) and a fermata at the end of measure 11.

Allegro

Musical score for the Allegro section, measures 12 through 42. The music is written in bass clef with a 4/4 time signature. It features a variety of rhythmic patterns, including eighth notes, sixteenth notes, and quarter notes, with some accidentals and a key signature change to one sharp (F#) at the end of measure 42.

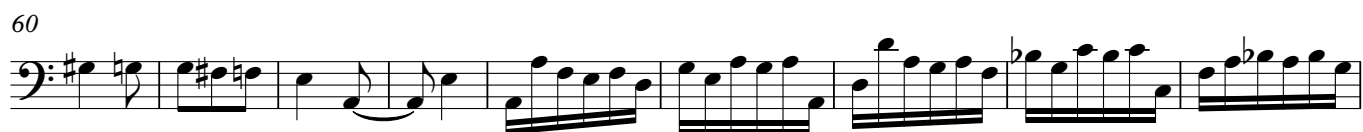
6 Adagio

non Tanto



Allegro

8



Sonata Op.1 no.3

Adagio **Allegro**

6

11

16 **Adagio**

21

25 **Tempo Giusto**

33 **Adagio**

40 **Presto** **Adagio**

Tasto solo

46

Allegro

2



59



65



70



77



84



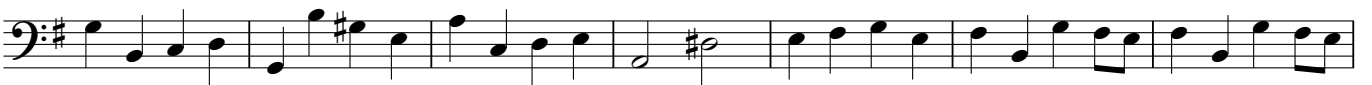
90



97



104



111

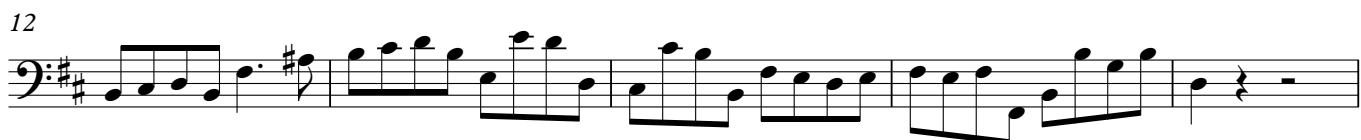


Sonata Op.1 no.4

Adagio



Allegro



29



34



38



42



47



52

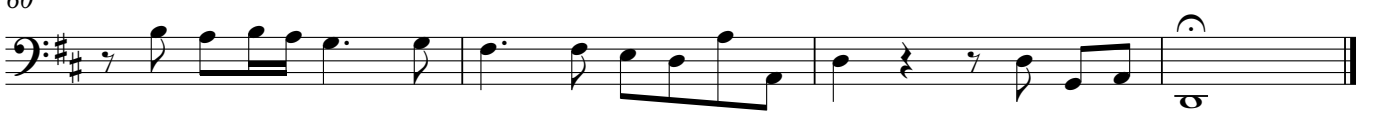


Piano

57



60



Grave



9



15



Sonata Op.1 no.5

Affettuoso

9



18



26



32



38

**Vivace**

6



10



14



18



23



28



33



39



44



49



51

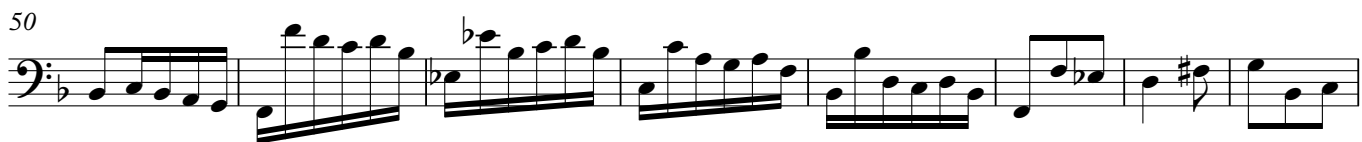


Grave



7



Allegro
2

Sonata Op.1 no.6

Affetuoso



SONATE

a Violino, Violone, e Cembalo,

DEDICATE

Al Illustrissimo et Excellentissimo Signore

IL SIG.^r BARONE DI KILMANS' EGGE

Cavallerizzo Maggiore e Ciamberlano

Di sua Maestà Britanica

e Elettore di Brunswick e Lunebourg

Da

FRANCESCO GEMINIANI

OPERA PRIMA

A AMSTERDAM

CHEZ JEANNE ROGER

Sonata Op.1 no.7

Francesco Geminiani

Grave



10



18



Allegro



4



9



14



19



24



Grave



Allegro

3



8



14



21



27



38



45



52



Sonata Op.1 no.8

Affetuoso

Measures 1-5 of the Affetuoso section. The music is in bass clef, key of D major (two sharps), and common time (C). It begins with a quarter rest followed by a quarter note D, then a series of eighth and sixteenth notes.

6

Measures 6-9 of the Affetuoso section. The music continues with eighth and sixteenth notes, ending with a quarter rest.

10

Measures 10-13 of the Affetuoso section. The music continues with eighth and sixteenth notes, ending with a half note D.

Vivace

Measures 14-19 of the Vivace section. The music is in bass clef, key of D major, and 3/8 time. It features a series of eighth notes and rests.

10

Measures 20-24 of the Vivace section. The music continues with eighth notes and rests.

15

Measures 25-29 of the Vivace section. The music continues with eighth notes and rests, ending with a double bar line.

20

Measures 30-31 of the Vivace section. The music continues with eighth notes and rests, ending with a double bar line.

32

Measures 32-41 of the Vivace section. The music continues with eighth notes and rests, ending with a double bar line.

42

Measures 42-46 of the Vivace section. The music continues with eighth notes and rests, ending with a double bar line.

Amoroso**Vivace**

Sonata Op.1 no.9

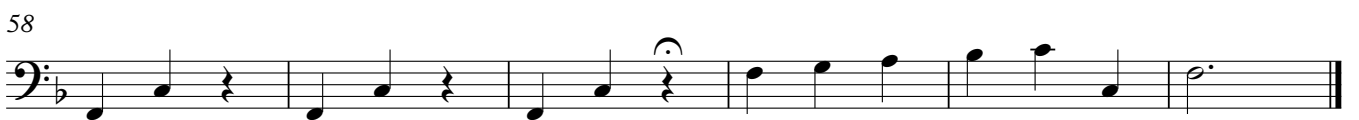
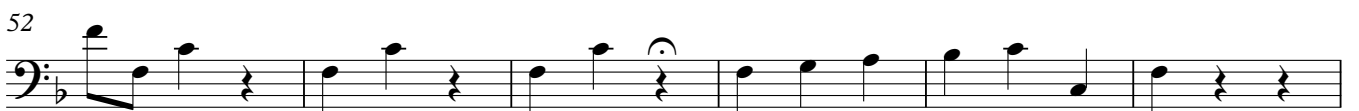
Vivace



Andante



Allegro



Sonata Op.1 no.10

Adagio



Allegro



Adagio



Allegro



Sonata Op.1 no.11

Vivace



10



19



28



37



46



55



63



Affetuoso

7



15

**Allegro**

6



11



19

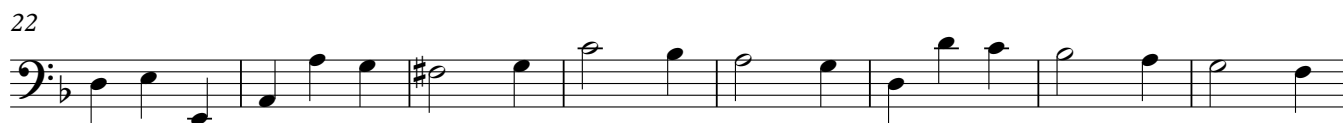


23



Sonata Op.1 no.12

Amoroso

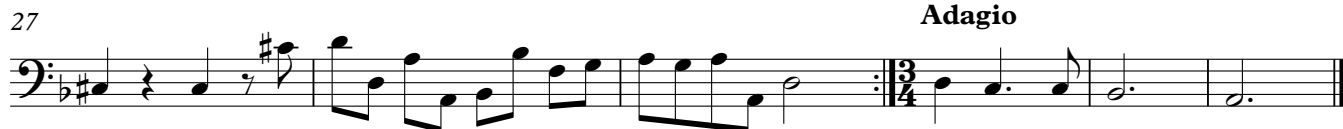


Adagio

Allegro



Adagio



Allegro

12



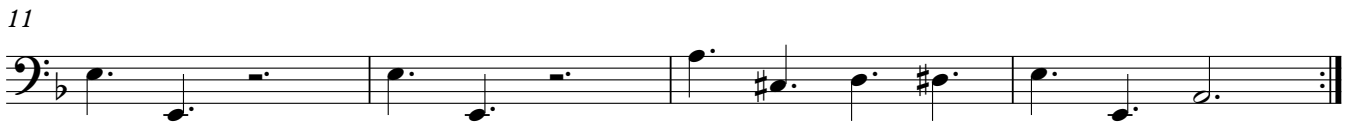
4



7



11



15



18



22



25



29

