

Romanza per Soprano

Canto

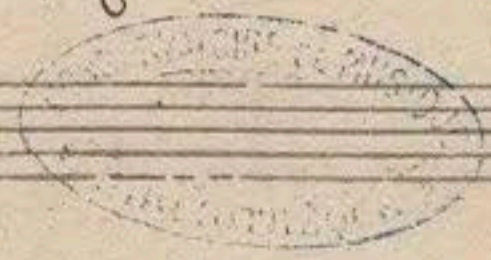
perdi mai quella amara
insegni bi-letu lei? o men bella si vor-

Mobius

-vi o pi-amie delia - vor o men bella si vor - vi o pi-amie - ca l'aria

Violon

Tu mi Sai de m'istice affetto
e il bi-ran d'ogni on-temp me d'amaro un bel no



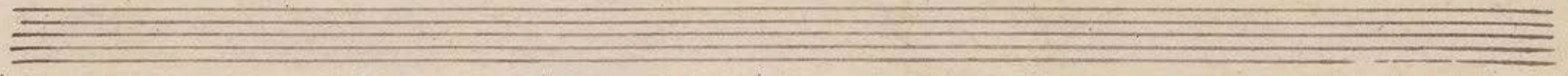
ms. 4188

69

Handwritten musical notation for the first system. The vocal line is on a single staff with lyrics: "maître d'adieu, edigne car la del i'vra, edigne car p'adieu". The piano accompaniment consists of two staves with chords and some melodic fragments.

Handwritten musical notation for the second system. The vocal line is on a single staff with lyrics: "mais Nigelle ornata infen-sibi-le tu ser o ma belle si cher - rei o pinia". The piano accompaniment consists of two staves with chords and some melodic fragments.

Handwritten musical notation for the third system. The vocal line is on a single staff with lyrics: "rien d'lia - mar o mar belle si cher rei o pinia rien d'lia". The piano accompaniment consists of two staves with chords and some melodic fragments.



Handwritten musical notation on a five-line staff. The notes are mostly quarter and eighth notes. Below the staff, there is a line of lyrics in Finnish: "O riizeltä ^{Anderssonin} ~~Liikkeen~~ O meen bula Ti vor-rii o jiraan".



Handwritten musical notation on a five-line staff. The notes are mostly quarter and eighth notes. Below the staff, there is a line of lyrics: "riia seia non".



Four empty musical staves at the bottom of the page, with no handwritten notation.

