

Lead Vocal

I Don't Have a Care in the World

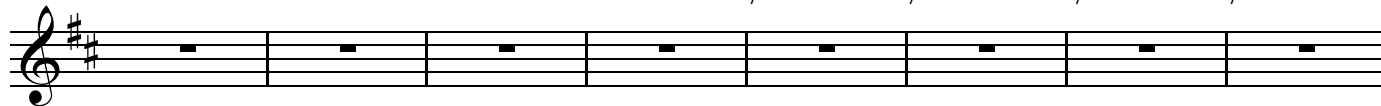
Daniel Leo Simpson

April 1976

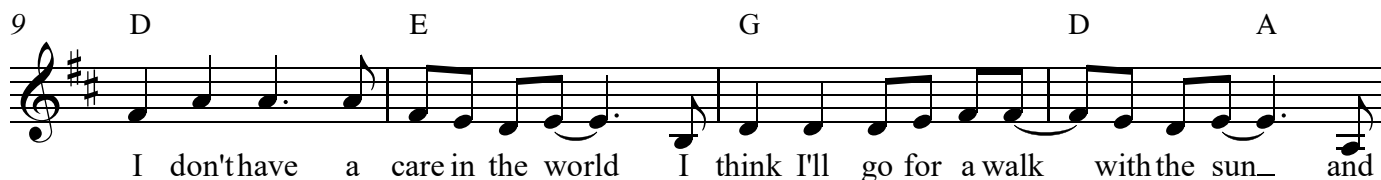
Sierra Vista, AZ

Fast and Breezy ♩ = 140

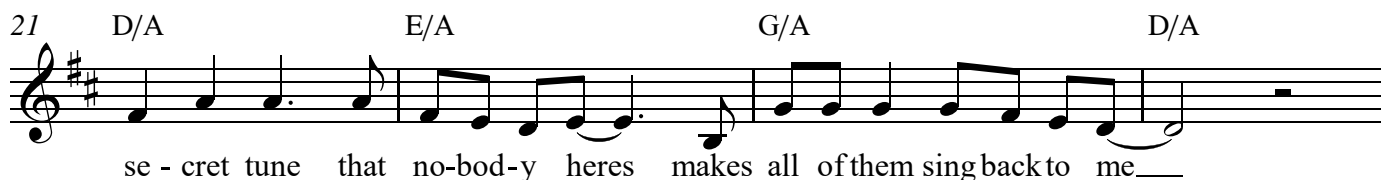
D E G D A D/A E/A G²/A D/A A



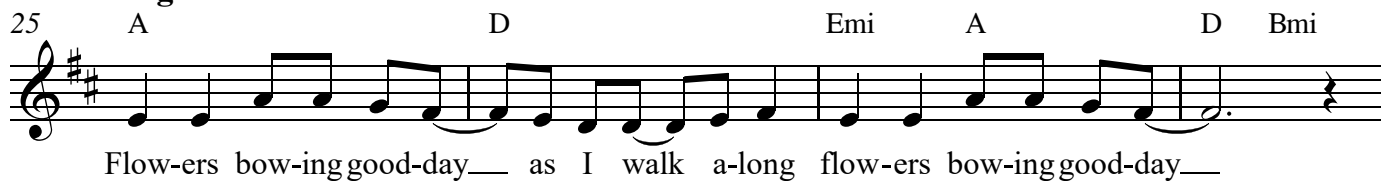
Verse 1



Verse 2



Bridge



Copyright 1976 by Daniel Leo Simpson

www.danielsimpson.com

cum sancto spiritu

I Don't Have a Care in the World - Simpson 042419

Verse 3

35 D E G D A

I don't have a care in the world I think I'll go and lie un - der a tree_ per

39 D/A E/A G/A D/A A

haps the breeze will take me a - way_ to some-where else I'd ra-ther be

Instrumental

43 D E G D A D/A E¹¹/A G²/A D/A D

Bridge

51 A D Emi A D Bmi

Let's all o-pen our hearts_ let's all o-pen our hearts_

55 B Emi Emi⁷/D C A

each one form-ing a part_ sing-ing a - le - lu - ia_

Verse 4

59 C A D/A E/A

sing - ing a - le - lu - ia_ I don't have a care in the world and

63 G/A D/A A D/A E/A

all the world have I found_ at my side_ I'm now pre-pared with ju-bu-lent song to

67 G/A D G/A D

stand in the cen-ter of life_ to stand in the cen-ter of life_ I'm

71 G/A D

stand-ing in the cen-ter of life

Lead Vocal
Harmony 1
Harmony 2
Harmony 3

I Don't Have a Care in the World

Daniel Leo Simpson
April 1976
Sierra Vista, AZ

Fast and Breezy ♩ = 140

D E G D A D/A E/A G²/A D/A A

Verse 1

9 D E G D A

V.S.

13 D/A E/A G/A D/A A

let the warmth and cheer that he brings keep tell-ing me how it is done___

Verse 2

17 D E G D A

I don't have a care in the world I'm whist' ling to ev-'ry bird that I see___ the

21 D/A E/A G/A D/A

se - cret tune that no-bod - y heres makes all of them sing back to me___

Bridge

25 A D Emi A D Bmi

Flow - ers bow-ing good-day___ as I walk a-long flow - ers bow-ing good-day___

29 B Emi Emi⁷/D C A

each one seem-ing to say___ come and sing_ a-long we're so hap-py to - day___

Verse 3

33 C A D E G

we're so hap-py to-day___ I don't have a care in the world I think I'll go and lie un-

I don't have a care in the world I think I'll go and lie un-

I don't have a care in the world I think I'll go and lie un-

V.S.

38 D A D/A E/A G/A

der a tree_ per-haps the breeze will take me a - way_ to some-where else I'd ra-ther be

der a tree_ per-haps the breeze will take me a - way_ to some-where else I'd ra-ther be

der a tree_ per-haps the breeze will take me a - way_ to some-where else I'd ra-ther be

Instrumental

42 D/A A D E G D A D/A E¹¹/A G²/A

Bridge

50 D/A D A D Emi A D Bmi

Let's all o-pen our hearts_ let's all o-pen our hearts_

Let's all o-pen our hearts_ let's all o-pen our hearts_

Let's all o-pen our hearts_ let's all o-pen our hearts_

55 B Emi Emi⁷/D C A C

each one form-ing a part__ sing-ing a-le-lu-ia__ sing-ing a-le-lu-ia.

Verse 4

60 A D/A E/A G/A D/A A

I don't have a care in the world and all the world have I found__ at my side. I'm

65 D/A E/A G/A D

now pre-pared with ju-bu-lent song. to stand in the cen-ter of life__ to V.S.

69 G/A D G/A

stand in the cen-ter of life I'm stand-ing in the cen-ter of life

stand in the cen-ter of life I'm stand-ing in the cen-ter of life

stand in the cen-ter of life I'm stand-ing in the cen-ter of life

stand in the cen-ter of life I'm stand-ing in the cen-ter of life

72 D

stand in the cen-ter of life I'm stand-ing in the cen-ter of life

stand in the cen-ter of life I'm stand-ing in the cen-ter of life

stand in the cen-ter of life I'm stand-ing in the cen-ter of life

stand in the cen-ter of life I'm stand-ing in the cen-ter of life