

# CHORALE PRELUDE

(from: 'Da Jesus an dem Kreuze stund' - 1724)

Adapted for Trumpet and Organ

Score (03':20")

Peter Gerritz (1681 - 1728)

Arr. Michel Rondeau

1. Praeludium  $\text{♩} = 70$

Trumpet in C

Organ

This system shows the beginning of the Praeludium. The Trumpet in C part starts with a melodic line in the treble clef, featuring eighth and sixteenth notes. The Organ part is in grand staff (treble and bass clefs), providing harmonic support with chords and moving lines.

C Tpt.

Org.

This system continues the Praeludium. The C Trumpet part has a melodic line with a trill (tr) at the end. The Organ part continues with harmonic accompaniment.

C Tpt.

Org.

This system continues the Praeludium. The C Trumpet part has a melodic line with a trill (tr) and a fermata. The Organ part continues with harmonic accompaniment.

2. Choral

C Tpt.

Org.

This system shows the beginning of the Choral section. The C Trumpet part has a melodic line with a trill (tr) and a fermata. The Organ part continues with harmonic accompaniment.

CHORALE PRELUDE - Gerritz - Score

C Tpt. 17

Org. 17

Detailed description: This system contains measures 17 through 22. The C Tpt. part (top staff) begins with a whole rest in measure 17, followed by a quarter rest, then a quarter note G4, a quarter note A4, a quarter note B4, a quarter note C5, a quarter note B4, a quarter note A4, a quarter note G4, and a half note F#4. The Organ part (bottom two staves) starts with a whole rest in measure 17, followed by a quarter rest, then a quarter note G3, a quarter note A3, a quarter note B3, a quarter note C4, a quarter note B3, a quarter note A3, a quarter note G3, and a half note F#3. The organ part features a variety of textures, including chords and moving lines.

C Tpt. 23

Org. 23

Detailed description: This system contains measures 23 through 29. The C Tpt. part (top staff) has a quarter note G4, a quarter note A4, a quarter note B4, a quarter note C5, a quarter note B4, a quarter note A4, a quarter note G4, and a half note F#4. The Organ part (bottom two staves) continues with a quarter note G3, a quarter note A3, a quarter note B3, a quarter note C4, a quarter note B3, a quarter note A3, a quarter note G3, and a half note F#3. The organ part continues with complex textures, including chords and moving lines.

C Tpt. 30

3. Variatio

Org. 30

Detailed description: This system contains measures 30 through 35. The C Tpt. part (top staff) has a quarter note G4, a quarter note A4, a quarter note B4, a quarter note C5, a quarter note B4, a quarter note A4, a quarter note G4, and a half note F#4. The Organ part (bottom two staves) continues with a quarter note G3, a quarter note A3, a quarter note B3, a quarter note C4, a quarter note B3, a quarter note A3, a quarter note G3, and a half note F#3. The organ part continues with complex textures, including chords and moving lines.

C Tpt. 36

Org. 36

Detailed description: This system contains measures 36 through 41. The C Tpt. part (top staff) has a quarter note G4, a quarter note A4, a quarter note B4, a quarter note C5, a quarter note B4, a quarter note A4, a quarter note G4, and a half note F#4. The Organ part (bottom two staves) continues with a quarter note G3, a quarter note A3, a quarter note B3, a quarter note C4, a quarter note B3, a quarter note A3, a quarter note G3, and a half note F#3. The organ part continues with complex textures, including chords and moving lines.

CHORALE PRELUDE - Gerritz - Score

42 *tr*

C Tpt.

Org.

48

C Tpt.

Org.

54 *tr*

C Tpt.

Org.

# CHORALE PRELUDE

(from: 'Da Jesus an dem Kreuze stund' - 1724)

Adapted for Trumpet and Organ

## Trumpet in B $\flat$

Peter Gerritz (1681 - 1728)

Arr. Michel Rondeau

### 1. Praeludium $\text{♩} = 70$

Musical notation for the first section, '1. Praeludium', measures 1-12. The key signature is one sharp (F#) and the time signature is common time (C). The notation includes eighth and sixteenth notes, rests, and trills (tr).

### 2. Choral

Musical notation for the second section, '2. Choral', measures 13-26. The key signature is one sharp (F#) and the time signature is common time (C). The notation includes quarter notes, eighth notes, and rests.

### 3. Variatio

Musical notation for the third section, '3. Variatio', measures 27-50. The key signature is one sharp (F#) and the time signature is common time (C). The notation includes quarter notes, eighth notes, rests, and trills (tr). A '2' indicates a second ending or repeat sign.

# CHORALE PRELUDE

(from: 'Da Jesus an dem Kreuze stund' - 1724)

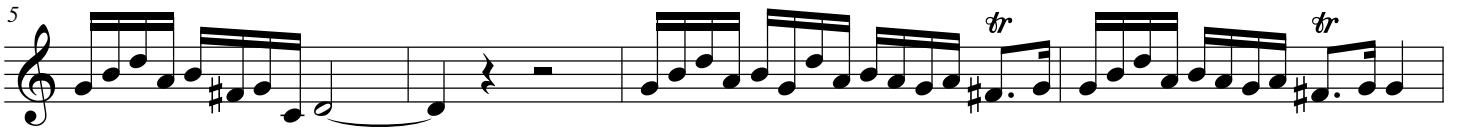
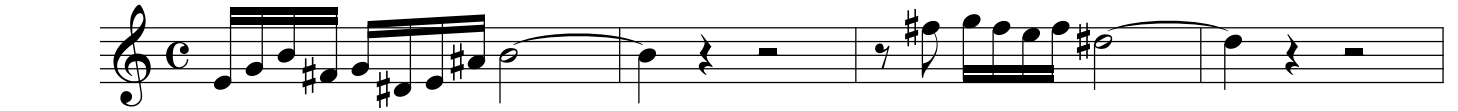
Adapted for Trumpet and Organ

## Trumpet in C

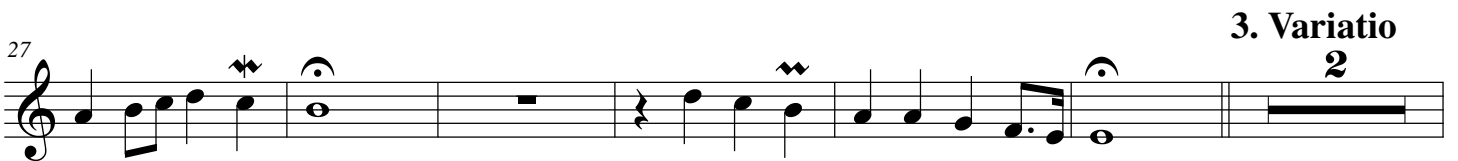
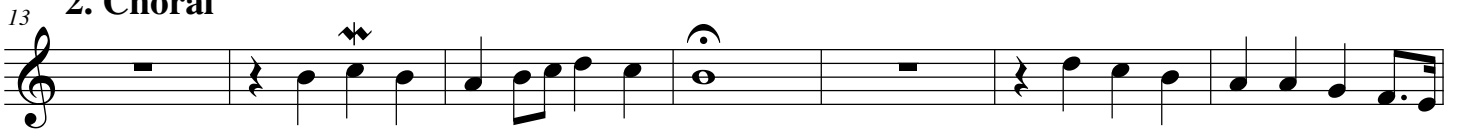
Peter Gerritz (1681 - 1728)

Arr. Michel Rondeau

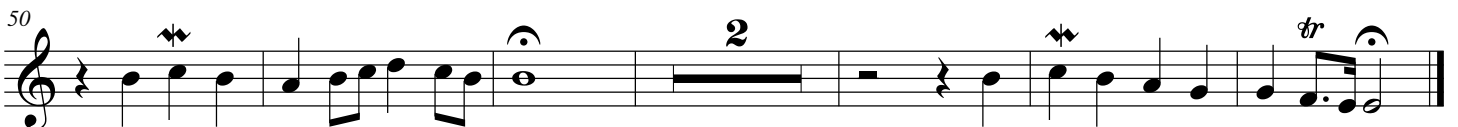
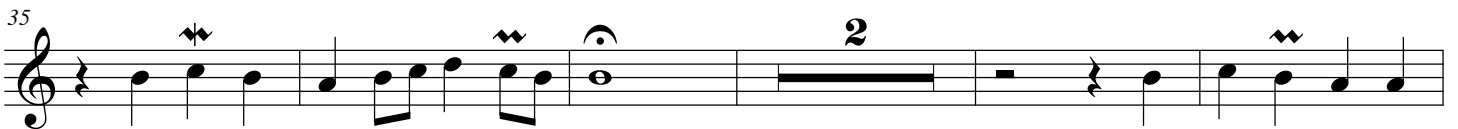
### 1. Praeludium $\text{♩} = 70$



### 2. Choral



### 3. Variatio



# CHORALE PRELUDE

(from: 'Da Jesus an dem Kreuze stund' - 1724)

Adapted for Trumpet and Organ

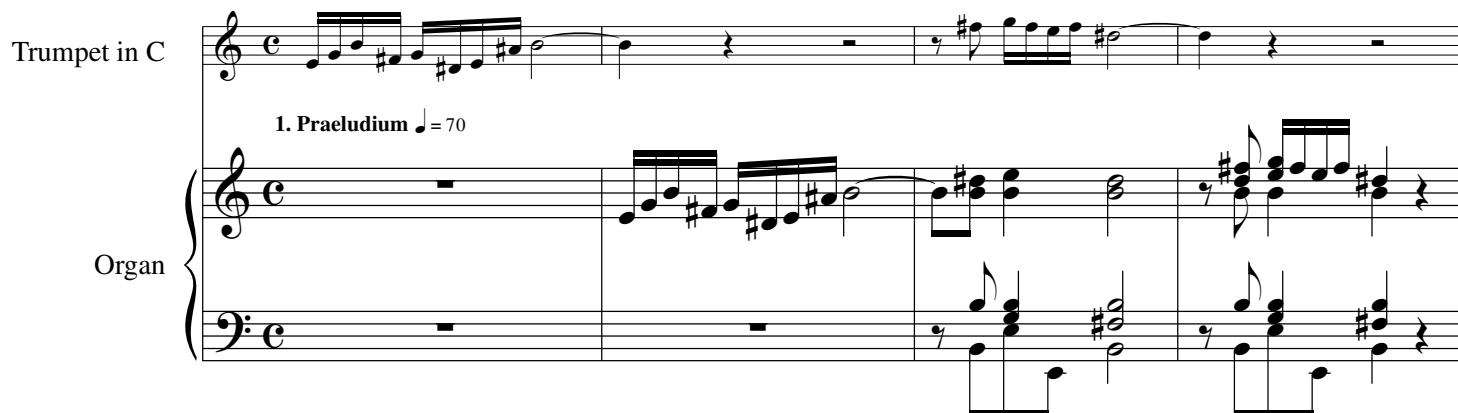
Peter Gerritz (1681 - 1728)

Arr. Michel Rondeau

## Organ

Trumpet in C

1. Praeludium ♩ = 70



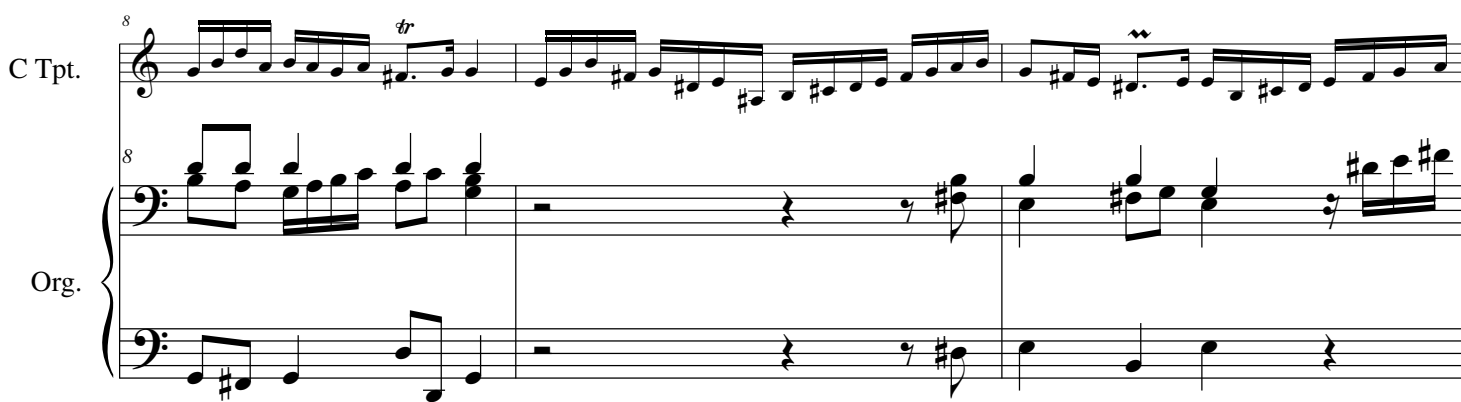
C Tpt.

Org.



C Tpt.

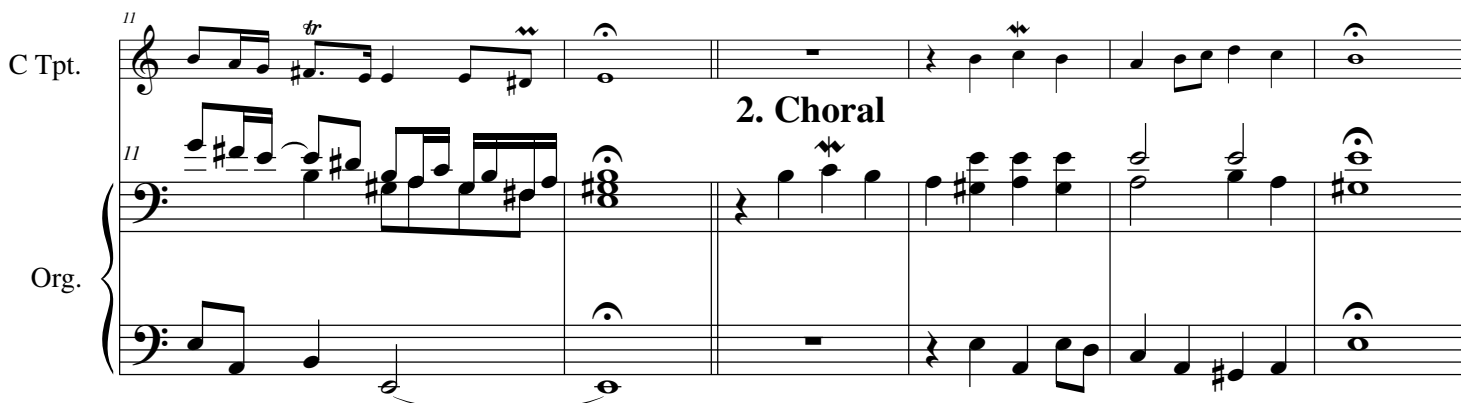
Org.



C Tpt.

Org.


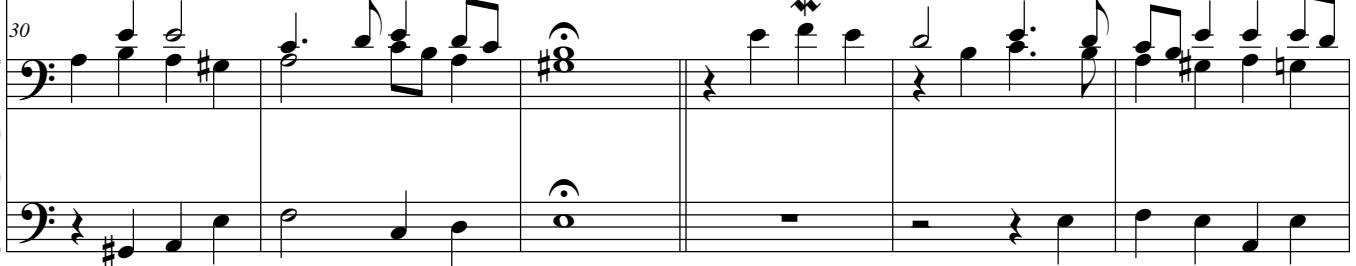
2. Choral



CHORALE PRELUDE - Gerritz - Organ

C Tpt.  

C Tpt.  

C Tpt.   **3. Variatio**

C Tpt.  

CHORALE PRELUDE - Gerritz - Organ

C Tpt.

42

Org.

Detailed description: This system covers measures 42 to 47. The C Tpt. part begins at measure 42 with a treble clef, a key signature of one sharp (F#), and a 3/4 time signature. It features a melodic line starting with a quarter note G4, followed by an eighth note F#4, and a half note E4. A trill (tr) is indicated above the first two notes. The organ part consists of two staves. The upper staff has a bass clef and starts with a quarter note G2, followed by an eighth note F#2, and a half note E2. The lower staff has a bass clef and starts with a quarter note G2, followed by an eighth note F#2, and a half note E2. The organ part continues with a complex rhythmic pattern of eighth and sixteenth notes in the upper staff, while the lower staff provides a steady bass line.

C Tpt.

48

Org.

Detailed description: This system covers measures 48 to 53. The C Tpt. part continues with a melodic line that includes a quarter note G4, followed by an eighth note F#4, and a half note E4. The organ part continues with a complex rhythmic pattern of eighth and sixteenth notes in the upper staff, while the lower staff provides a steady bass line.

C Tpt.

54

Org.

Detailed description: This system covers measures 54 to 59. The C Tpt. part continues with a melodic line that includes a quarter note G4, followed by an eighth note F#4, and a half note E4. A trill (tr) is indicated above the first two notes. The organ part continues with a complex rhythmic pattern of eighth and sixteenth notes in the upper staff, while the lower staff provides a steady bass line.