

MARY I BELIEV'D THEE TRUE,

Scotch Song

with an Accompaniment
for the

PIANO FORTE or HARP,

The Poetry by The^s. Moore Esq^r.

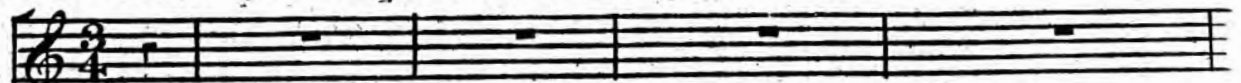
The Music Composed by

Sir J. A. Stevenson Mus. Doc.

Pr. 1/6

London Printed by Broderip & Wilkinsons No 13 Haymarket.

Voice.



Largo

Piano-Forte.
or Harp.



MARY, I believ'd thee

true, And I was blest in thus believing; But now I mourn that e'er I knew A girl so

Con Espres^{ivo}

By permission of Mr. J. Phares of Dublin.

fair, and so de-ceiving! Few have e-ver lov'd like me, O! I have lov'd thee too sin-

-cerely! And few have e'er deceiv'd like thee: Alas! deceiv'd me too se- verely! Fare thee

well, Fare thee well!

2

Fare thee well! yet think a while
 On one whose bosom bleeds to doubt thee;
 Who now would rather trust that smile,
 And die with thee, than live without thee!
 Fare thee well! I'll think of thee,
 Thou leav'st me many a bitter token;
 For see, distracting woman! see,
 My peace is gone — my heart is broken!
 Fare thee well!