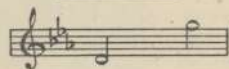


No 1 in Eb



No 2 in F



THE SHEPHERD'S SONG

SONG

FROM EDWARD ELGAR'S SEVEN LIEDER

WORDS BY

BARRY PAIN

MUSIC BY

EDWARD ELGAR

PRICE 2/6 NET

EDWARD ELGAR'S SEVEN LIEDER:

- | | |
|----------------------------|----------------------|
| 1. LIKE TO THE DAMASK ROSE | 2. QUEEN MARY'S SONG |
| 3. A SONG OF AUTUMN | 4. THE POET'S LIFE |
| 5. THRO' THE LONG DAYS | 6. RONDEL |
| 7. THE SHEPHERD'S SONG | |

ASCHERBERG, HOPWOOD & CREW, LTD.

16, MORTIMER STREET, LONDON, W. 1.

SOLE AGENTS
AUSTRALIA & NEW ZEALAND: CHAPPELL & CO. LTD., 250, PITT STREET, SYDNEY

MADE IN ENGLAND

2/6

THE SHEPHERD'S SONG.

Des Schäfer's Lied.



3 1508 01377111 3

WORDS BY BARRY PAIN.

Deutsche Worte von Ed. Sachs.

MUSIC BY EDWARD ELGAR.

Allegretto.

Voice.

Piano.

p

Down the dust-y road to - gether Home-ward pass the hur-rying sheep,
 Auf dem lan-gen Weg, der stäubet, Heim die Her - de Scha - fe eilt,

cresc. *rit.* *a tempo* *rit.*

Stu - pid with the sum-mer wea-ther, Too much grass and too much sleep,
 Von der Som-mer-sonn' be - täu - bet, Von der Weid', wo sie ge - weilt,

cresc. *rit.* *a tempo* *rit.*

OK

mf *allargando* *p* *rit.*

I, their shep-herd, sing to thee That sum - mer is a joy to me.
 Ich, dein Schä-fer, sin - ge dir: Der Som - mer ist ein'Freude mir.

mf *colla voce*

ped. * *ped.* *

p

Down the shore rolled waves all creamy
 An das U - fer schlu-gen schäumend

a tempo

cresc. *rit.* *v*

With the flecked surf yes - ter - night; I swam far out in star - light dreamy,
 Weiss - ge - krön - te Wel - len an; Ich schwamm hinaus, die Nacht lag träumend,

cresc. *rit.*

a tempo *rit.* *v* *mf* *allargando* *p*

In moving wa - ters cool and bright, I, the shepherd, sing to thee I
 Als sie sich ü - ber's Was - ser spann; Ich, dein Schäfer, sin - ge dir: Die

rit. *mf*

ped. * *ped.* *

rit.

love the strong life of the sea.
See ist ei - ne Freu-de mir.

colla voce

a tempo

cresc.

p

And up - on the hill - side grow - ing
Auf der blum' - gen Ber - ges - hal - de,

dim.

p

p

Where the fat sheep dozed in shade, Bright red
Wo die Her - de schla - fend lag, Fand ich

p

cresc.

pop - pies I found blow - - - ing, Drow - sy,
bei dem Saum vom Wal - - - de Ro - te

cresc.

tall and loose - ly made, I, the
 Ro - sen an dem Hag; Ich, dein

cresc. molto *f*

shep-herd, sing to thee How fair the bright red pop-pies
 Schä-fer sin - ge dir. Wie rot die Ro - sen leuch-ten

largamente *rit. e dim.*

colla voce *rit. e dim.*

be. mir.

a tempo

p a tempo *dim.*

To the red-tiled home-stead bending Winds the road, so white and long
 Nach der trau-ten Hüt - te wen-det Sich der Weg, so lang und weiss,

pp *pp*

cresc. *rit.* *a tempo cresc.* *rit.*

Day and work are near their end-ing Sleep and dreams will end my song,
 Tag und Ar-beit sind vol-len-det, Bald naht sich der Schlummer leis;

rit. *a tempo cresc.* *rit.*

allargando *poco rit.* *f* *lento*

I, the shepherd, sing to thee; In the dream-time an-swer, an-swer
 Ich, dein Schäfer, sin-ge dir: In dem Trau-me träu-me, träum'von

mf *colla voce* *f* *lento*

La * La *

rit. *pp molto rit.*

me, In the dream-time an-swer, an-swer
 mir, In dem Trau-me träu-me, träum'von

a tempo *rit.* *pp* *colla voce*

me.
mir.

ppp

La * La *