

Violonchelo

# Cuarteto No 17

en Si bemol Mayor, K.458

Wolfgang Amadeus Mozart  
transcrip. Gory  
info@gory.jazztel.es

Allegro vivace assai

*f*

*p* *f* *p* *f*

*p* *pp*

*f*

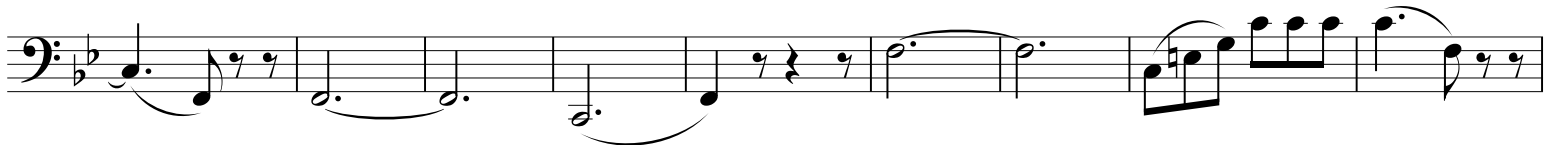
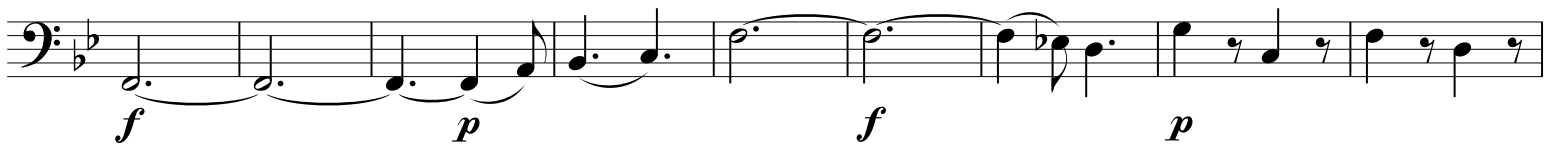
*p* *p*

*f* *fp* *f*

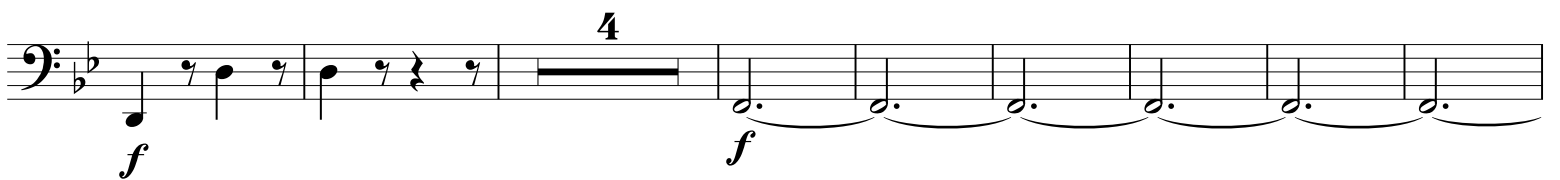
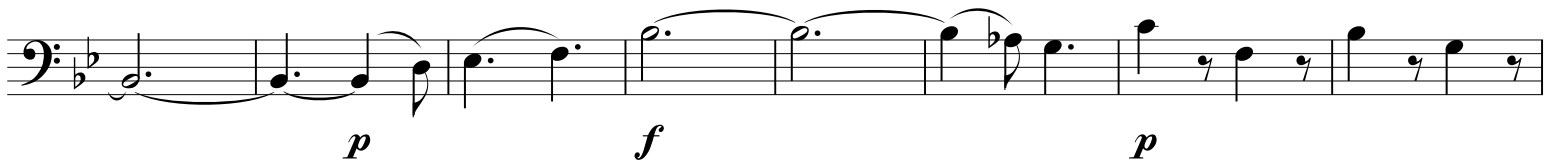
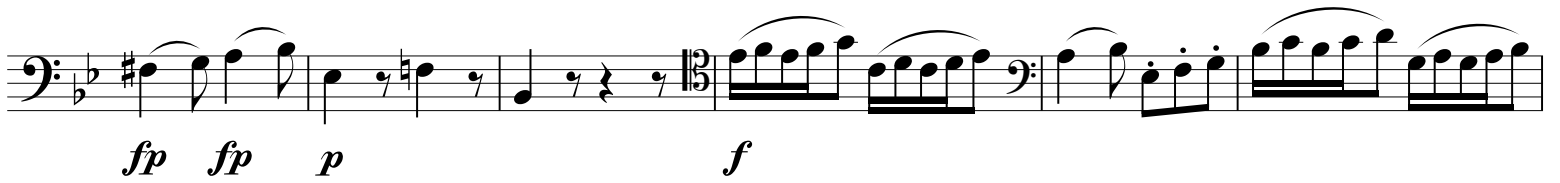
*fp* *fp* *fp* *fp* *fp* *fp* *p*

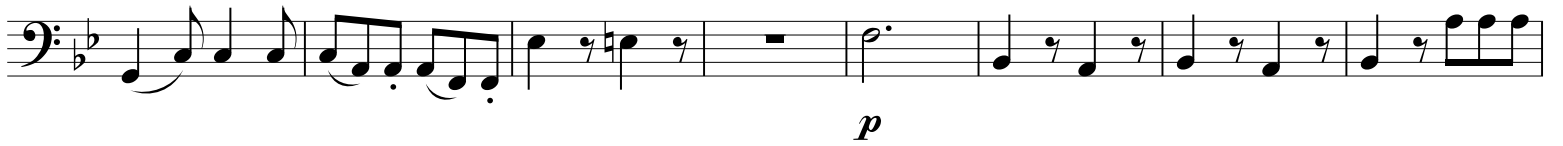
2

3

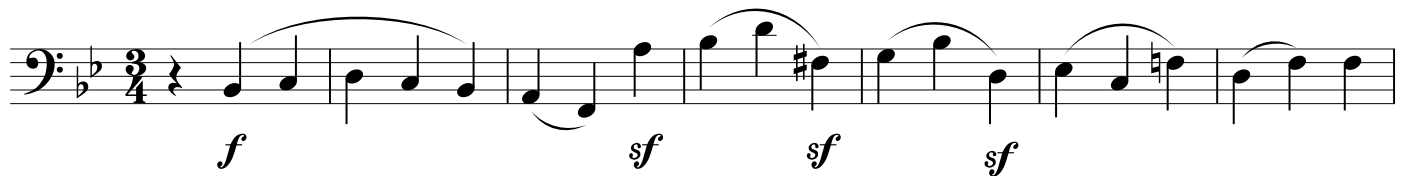








## MINUETTO. Moderato



## Trio

*sempre p* *sfp*

*sf sf p*

*cresc. p*

*f p* *Menuetto D.C.*

## Adagio

*(p) sf p f p sf p*

*cresc. p cresc.*

*f p f*

*cresc. p*

First staff of music, bass clef, featuring a melodic line with slurs and accents.

Second staff of music, bass clef, featuring a rhythmic accompaniment with slurs and dynamic markings *sf* and *p*.

Third staff of music, bass clef, featuring a melodic line with slurs and dynamic markings *cresc.*, *p*, *sf*, *p*, *f*, *p*, and *cresc.*.

Fourth staff of music, bass clef, featuring a melodic line with slurs and dynamic markings *cresc.*, *p*, *cresc.*, *f*, and *p*.

Fifth staff of music, bass clef, featuring a melodic line with slurs and dynamic markings *f*, *p*, and *cresc.*.

Sixth staff of music, bass clef, featuring a melodic line with slurs and dynamic markings *f*, *p*, and *cresc.*.

Seventh staff of music, bass clef, featuring a melodic line with slurs and accents.

Eighth staff of music, bass clef, featuring a rhythmic accompaniment with slurs and dynamic markings *sf*, *p*, and *sf*.

Ninth staff of music, bass clef, featuring a melodic line with slurs and dynamic marking *p*.

Tenth staff of music, bass clef, featuring a melodic line with slurs and dynamic markings *f*, *p*, and *pp staccato*.

Allegro assai

10 *f* *p*

9 *f*

*p*

*f*

*p* *cresc.* *p*

*cresc.* *p* *cresc.*

Detailed description: This is a page of musical notation for a bass clef instrument in 2/4 time. The tempo is marked 'Allegro assai'. The score consists of eight staves of music. The first staff begins with a measure containing a fermata and the number '10' above it, followed by a series of eighth notes. Dynamics include *f* and *p*. A second measure in the first staff has a fermata and the number '2' above it. The second staff continues with eighth notes and rests. The third staff features a measure with a fermata and the number '9' above it, followed by eighth notes. The fourth staff starts with a measure containing a fermata and the number '2' above it, followed by eighth notes. The fifth staff begins with a series of eighth notes, some with a fermata, and a dynamic of *f*. The sixth staff consists of eighth notes. The seventh staff has eighth notes with dynamics *p*, *cresc.*, and *p*. The eighth staff has eighth notes with dynamics *cresc.*, *p*, and *cresc.*



First staff of music in bass clef with a key signature of two flats. It begins with a dynamic marking of *f*, followed by *p*, then *cresc.*, and ends with *f*. The melody features a mix of quarter and eighth notes with some rests.

Second staff of music in bass clef with a key signature of two flats. It continues the melodic line with eighth notes and includes a dynamic marking of *p* at the end.

Third staff of music in bass clef with a key signature of two flats. It features a dynamic marking of *f* and includes a repeat sign at the end.

Fourth staff of music in bass clef with a key signature of two flats. It includes a dynamic marking of *p*, a four-measure rest marked with a '4', and a dynamic marking of *f*.

Fifth staff of music in bass clef with a key signature of two flats. It includes a four-measure rest marked with a '4' and continues with eighth notes.

Sixth staff of music in bass clef with a key signature of two flats. It features a dynamic marking of *p* and includes a series of eighth notes.

Seventh staff of music in bass clef with a key signature of two flats. It consists of a continuous eighth-note pattern.

Eighth staff of music in bass clef with a key signature of two flats. It continues the eighth-note pattern.

Ninth staff of music in bass clef with a key signature of two flats. It includes a dynamic marking of *f* and a four-measure rest marked with an '11'.

