

ALLMAND in C MAJOR

for Oboe and Harpsichord

Score (01':40")

William Brade (1560 - 1630)

Arr. Michel Rondeau

Allegro ♩ = 120

Oboe

Harpsichord

Ob.

Hpschd.

Fine

Ob.

Hpschd.

ALLMAND in C MAJOR - Brade - Score

15

Ob.

Hpschd.

Detailed description: This system covers measures 15 to 18. The Oboe part begins with a half note G4, followed by quarter notes A4, B4, and C5. A repeat sign follows, with the first ending being a half note G4 and the second ending being a quarter note G4. The Harpsichord accompaniment features a treble clef with chords and a bass clef with a simple bass line. Measure 15 starts with a half note G4 in the bass and a half note G4 in the treble. Measure 16 has a half note A4 in the bass and a half note A4 in the treble. Measure 17 has a half note B4 in the bass and a half note B4 in the treble. Measure 18 has a half note C5 in the bass and a half note C5 in the treble.

19

Ob.

Hpschd.

Detailed description: This system covers measures 19 to 21. The Oboe part continues with quarter notes D5, E5, F5, and G5. A repeat sign follows, with the first ending being a quarter note G5 and the second ending being a quarter note G5. The Harpsichord accompaniment features a treble clef with chords and a bass clef with a simple bass line. Measure 19 starts with a half note G5 in the bass and a half note G5 in the treble. Measure 20 has a half note A5 in the bass and a half note A5 in the treble. Measure 21 has a half note B5 in the bass and a half note B5 in the treble.

22

Ob.

Hpschd.

Detailed description: This system covers measures 22 to 25. The Oboe part continues with quarter notes A5, B5, and C6. A trill (tr) is indicated over the final note. A repeat sign follows, with the first ending being a quarter note C6 and the second ending being a quarter note C6. The Harpsichord accompaniment features a treble clef with chords and a bass clef with a simple bass line. Measure 22 starts with a half note C6 in the bass and a half note C6 in the treble. Measure 23 has a half note D6 in the bass and a half note D6 in the treble. Measure 24 has a half note E6 in the bass and a half note E6 in the treble. Measure 25 has a half note F6 in the bass and a half note F6 in the treble.

ALLMAND in C MAJOR

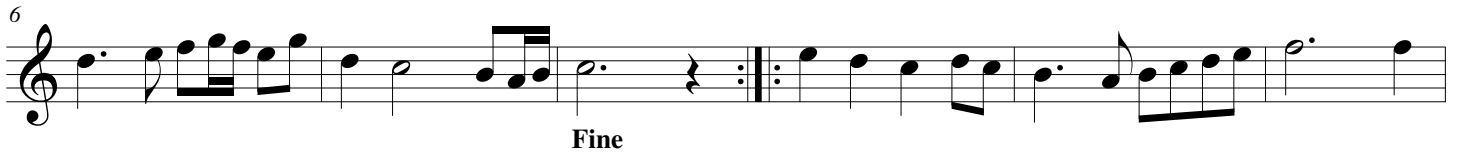
for Oboe and Harpsichord

Oboe

William Brade (1560 - 1630)

Arr. Michel Rondeau

Allegro ♩ = 120



ALLMAND in C MAJOR

for Oboe and Harpsichord

Harpsichord

William Brade (1560 - 1630)

Arr. Michel Rondeau

Oboe

Allegro ♩ = 120

Harpsichord

Ob.

Hpschd.

Fine

Fine

Ob.

Hpschd.

ALLMAND in C MAJOR - Brade - Harpsichord

Ob. ¹⁵

Hpschd.

Ob. ¹⁹

Hpschd.

Ob. ²²

Hpschd.