

# Franz Joseph Haydn Symphony No. 22

Adagio

English Horn

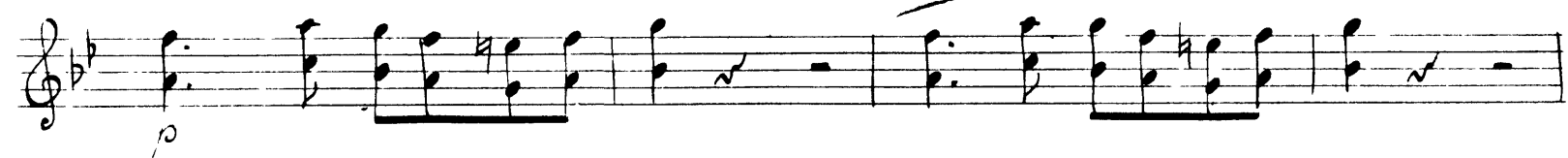
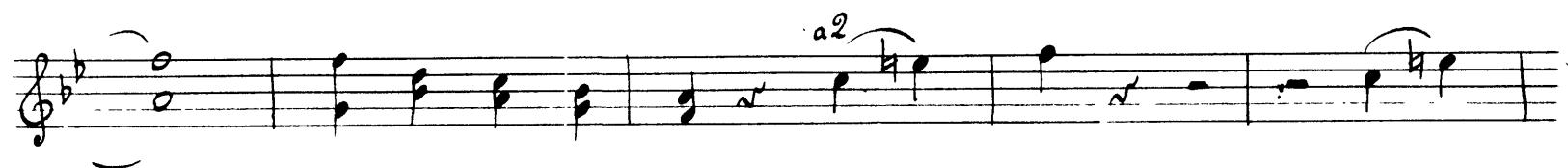
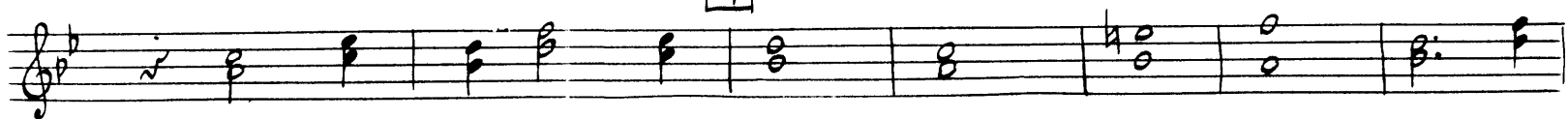
Musical score for English Horn, Adagio section. The score is written in G major (one flat) and common time (C). It consists of ten staves of music. The first staff begins with a dynamic marking of *ff* and a first ending bracket labeled 'a2'. The second staff starts with a dynamic marking of *p*. The third staff contains a first ending bracket labeled '1' and a sixteenth rest. The fourth staff contains a second ending bracket labeled '2' and a quarter rest. The fifth staff contains a third ending bracket labeled '3' and a quarter rest. The sixth staff contains a fourth ending bracket labeled '4' and a quarter rest. The seventh staff contains a fifth ending bracket labeled '5' and a quarter rest. The eighth staff contains a sixth ending bracket labeled '6' and a quarter rest. The ninth staff contains a seventh ending bracket labeled '7' and a quarter rest. The tenth staff contains an eighth ending bracket labeled '8' and a quarter rest. The score concludes with a double bar line and a repeat sign.

Presto

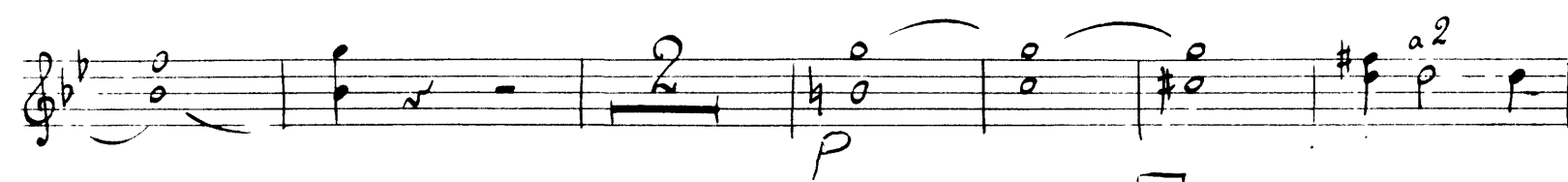
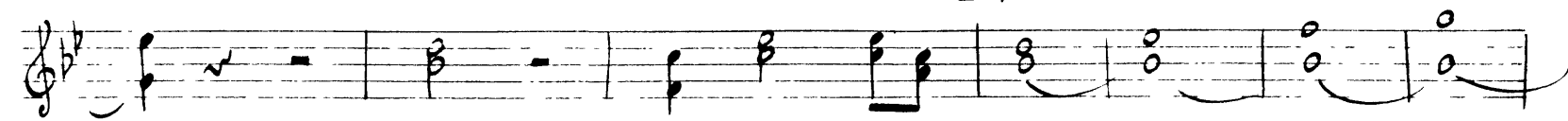
Musical score for English Horn, Presto section. The score is written in G major (one flat) and common time (C). It consists of two staves of music. The first staff begins with a dynamic marking of *f*. The second staff concludes with a dynamic marking of *p* and the instruction 'V. S.' (Vivace). The score concludes with a double bar line and a repeat sign.

English Horn

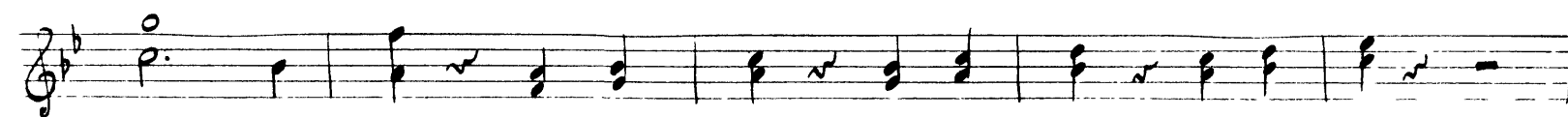
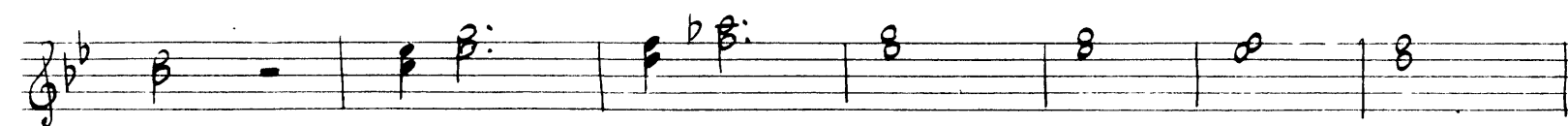
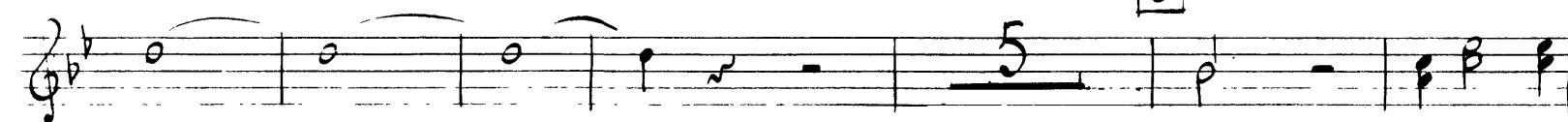
4

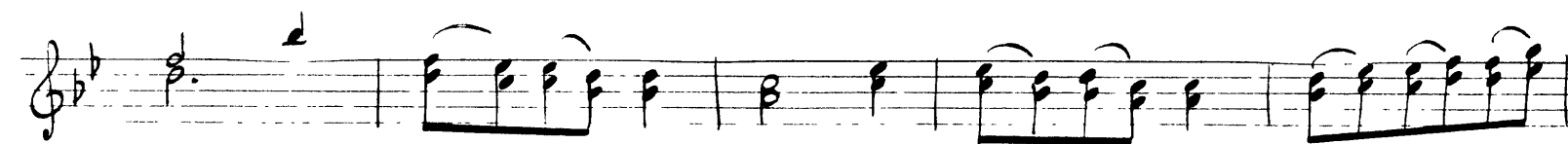
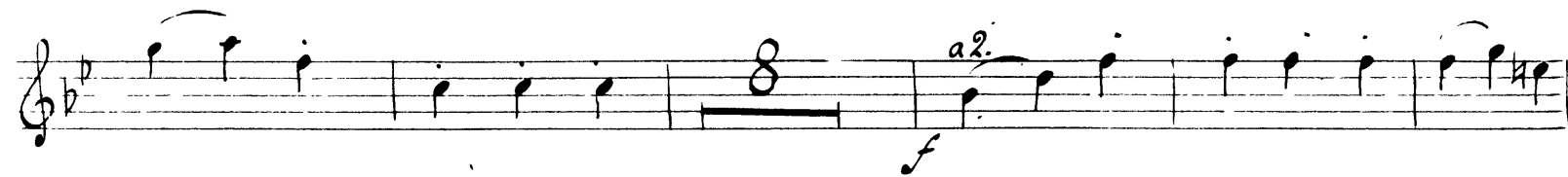
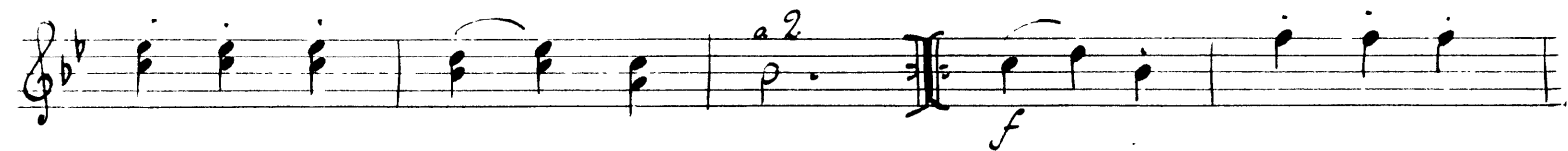
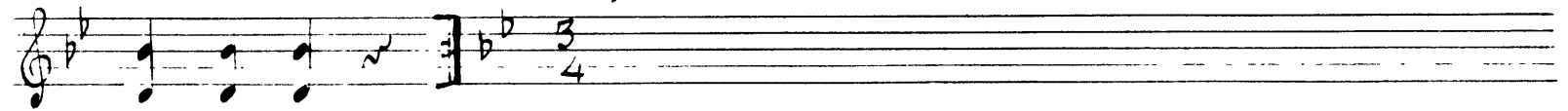
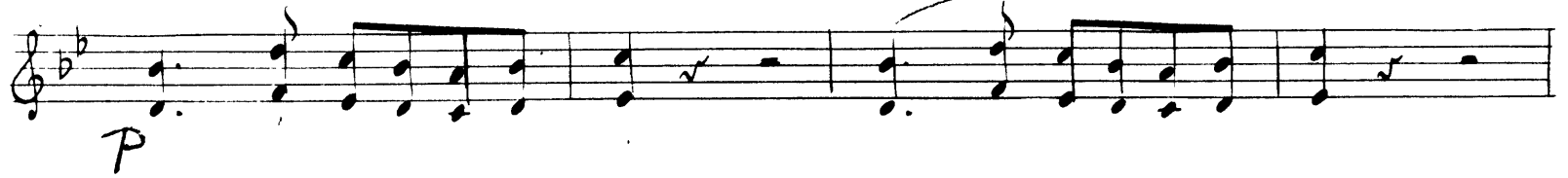


5



6





4 Finale Presto

# Franz Joseph Haydn Symphony No. 22

Oboe (originally English Horn)

Adagio

Musical score for Oboe (originally English Horn) in the Adagio section. The score is written in G major (one flat) and common time (C). It consists of six staves of music. The first staff begins with a dynamic marking of *ff* and contains a triplet of eighth notes. The second staff starts with a dynamic marking of *p* and includes a first ending bracket labeled '1'. The third staff features a double bar line with repeat dots, followed by a fourth ending bracket labeled '2' and a dynamic marking of *ff*. The fourth staff has a dynamic marking of *p* and includes an 11-measure rest. The fifth staff begins with a dynamic marking of *p* and a third ending bracket labeled '3'. The sixth staff starts with a dynamic marking of *f* and a six-measure rest. The section concludes with a double bar line.

An empty musical staff with a double bar line, indicating a section break or the end of a phrase.

PRESTO

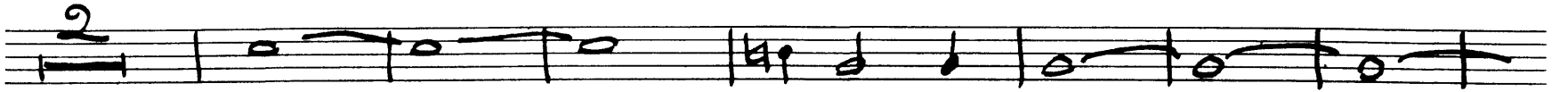
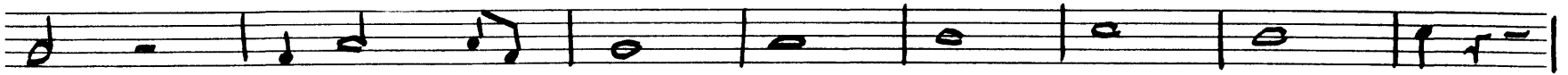
Musical score for Oboe (originally English Horn) in the Presto section. The score is written in G major (one flat) and common time (C). It consists of two staves of music. The first staff begins with a dynamic marking of *f*. The second staff includes a second ending bracket labeled '2'. The section concludes with a double bar line.

4

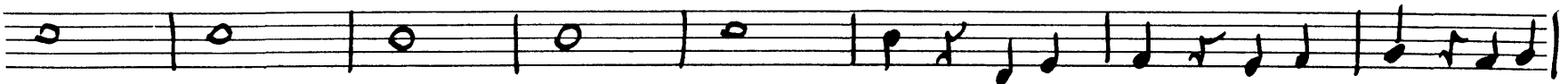
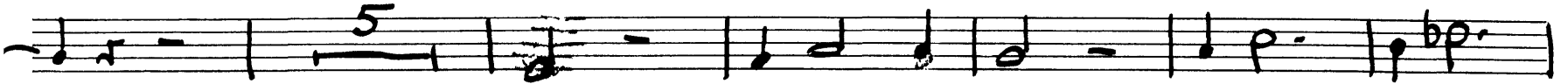
Oboe



5



6



# Menuetto

*f* *p* *f* *p* *f* *p* *p* *p*

TRIO solo

8

Menuetto Da Capo

# Finale

Oboe

Presto

Handwritten musical score for Oboe in Haydn's Symphony No. 22, Finale. The score is in 3/4 time and G major. It consists of 10 measures, with measure numbers 7, 8, 9, and 10 boxed. Dynamics include p, f, and mf. Performance markings include accents, slurs, and articulation marks.