

Franz Liszt
Hungarian Rhapsody No. 3

Violen.

Tempo giusto (quasi allegro)

f *p* *pizz.* *arco.* *f* *p* *cresc.* *f* *p* *pizz.* *arco.* *f* *p* *cresc.* *f* *p* *Presto, giocoso. Il. al.* *pizz.* *f* *p* *arco* *f* *tr.* *pizz.* *arco* *f* *lunga. r.*

Liszt — Hunagrian Rhapsody No. 3

2.

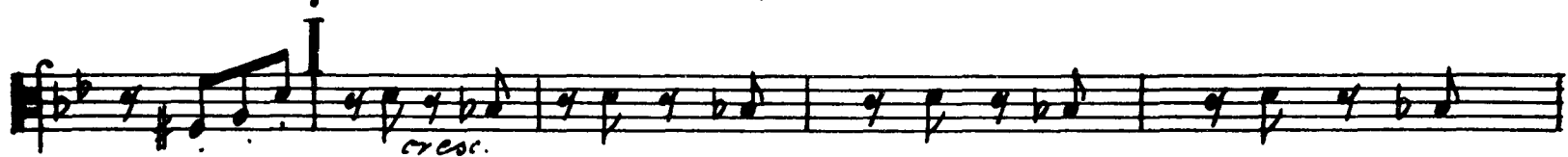
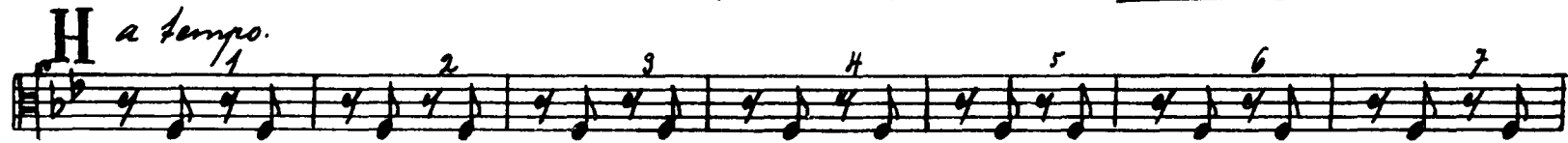
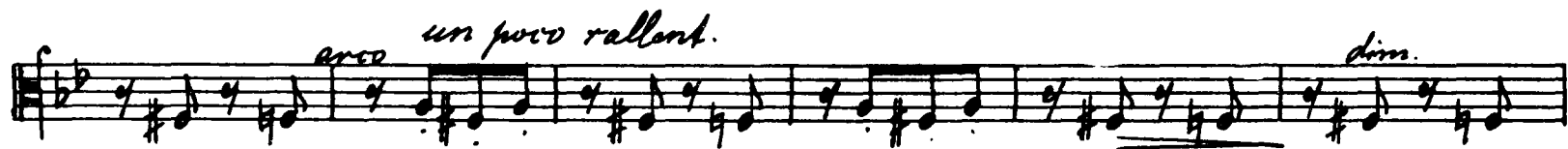
Violen.

E *Andante, quasi adagio.*

ppp *pizz.* *arco.* *ppp* *ppp* *p* *ppp.* *rall.* *p* *pizz.* *arco.* *Clarinetto Cadenz.* *pizz.* *p.*

allegro non troppo, tranqu. ma marc.

Violin.



Violon.

I. Un poco più mosso.

The first system of the violin part consists of two staves. The upper staff contains a melodic line with a series of eighth notes, each marked with an accent (>) and a slur. The lower staff provides a harmonic accompaniment with chords and moving lines.

The second system continues the melodic and harmonic development. It includes dynamic markings such as *f* and *fz*. Above the upper staff, there are rhythmic patterns consisting of eighth notes with stems pointing upwards, likely indicating fingerings or bowing techniques.

The third system features a consistent rhythmic accompaniment in the lower staff, marked *F sempre.* The upper staff continues with melodic fragments and rests.

The fourth system is marked with a large *K* and *ff*. It shows a more complex melodic line in the upper staff with many slurs and accents, while the lower staff continues with a rhythmic accompaniment.

The fifth system is marked *stringendo.* The upper staff features a very active melodic line with many slurs and accents, indicating a more intense and rapid passage. The lower staff continues with a rhythmic accompaniment.

The sixth system continues the melodic and harmonic progression, with the upper staff showing a melodic line and the lower staff providing a rhythmic accompaniment.

The seventh and final system on this page concludes with a melodic line in the upper staff and a rhythmic accompaniment in the lower staff, ending with a fermata over the final note.