

# Concerto in Sol maggiore per violino, archi e organo

n. 12 della *Stravaganza*

Violoncello

Antonio Lucio Vivaldi (1678-1741)

RV 298

**Spiritoso e non presto**

13 [1 Solo]

25 [Tutti]

37 [1 Solo] 7 v-no solo

53 v-cello

63 [Tutti] *p* *f*

75 [1 Solo]

85 [Tutti]

96

107

119

## Violoncello

Largo



121



127



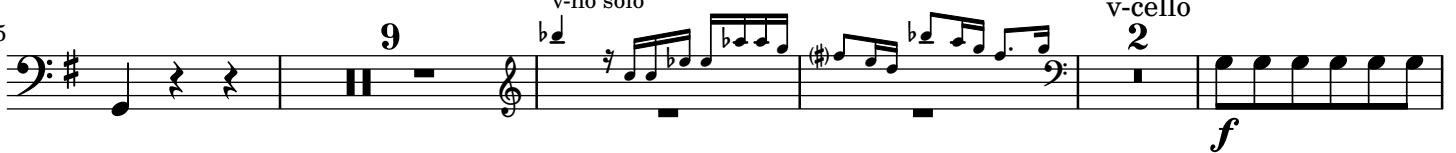
133



139



145



160



Allegro

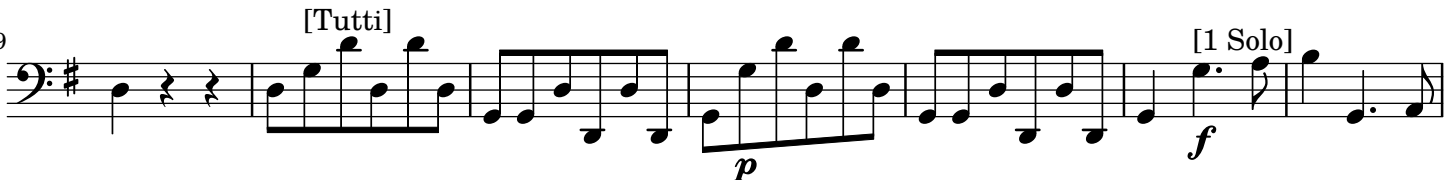
[1 Solo]



141



149



156



165



175



Violoncello

184 [Tutti]

192 [1 Solo]

200

208

216

223 [Tutti]

230

237

244 [1 Solo] 8 v-no solo v-cello

257 [Tutti]

264 [1 Solo]

273 2 Tasto solo

286 p f

Detailed description: This is a page of a musical score for the Violoncello part of Antonio Lucio Vivaldi's Concerto in Sol maggiore per violino, archi e organo (RV 298). The score is written in bass clef with a key signature of one sharp (F#). It consists of ten staves of music. The first staff (184) begins with a [Tutti] marking. The second staff (192) has a [1 Solo] marking. The third staff (200) continues the melodic line. The fourth staff (208) features a series of eighth notes. The fifth staff (216) continues with eighth notes. The sixth staff (223) has a [Tutti] marking and shows a rhythmic change to eighth notes. The seventh staff (230) continues with eighth notes. The eighth staff (237) continues with eighth notes. The ninth staff (244) has a [1 Solo] marking and includes a double bar line with the number 8 above it, followed by a section of sixteenth notes. The tenth staff (257) has a [Tutti] marking and continues with eighth notes. The eleventh staff (264) has a [1 Solo] marking and continues with eighth notes. The twelfth staff (273) has a '2' above it and 'Tasto solo' below it, indicating a section for the organ. The final staff (286) ends with a fermata and dynamic markings 'p' and 'f'.