

# Concierto para Piano y Orquesta

Tuba

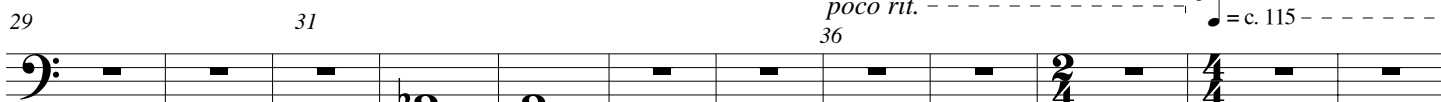
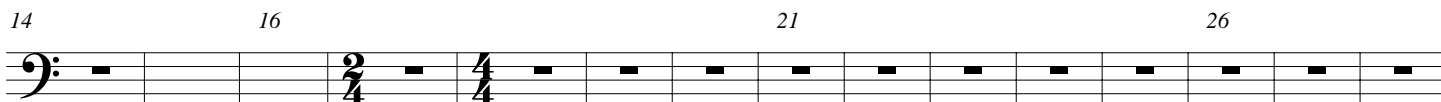
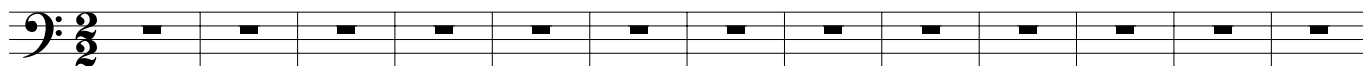
- I, II, III - Nota: Se indica cada alteración, excepto donde existe armadura

Carlos Jurado  
Arreglos: Nicolás Espinoza

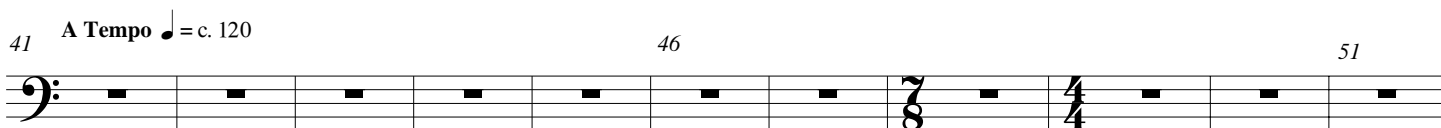
Allegro (M.M. ♩ = c. 120)

6

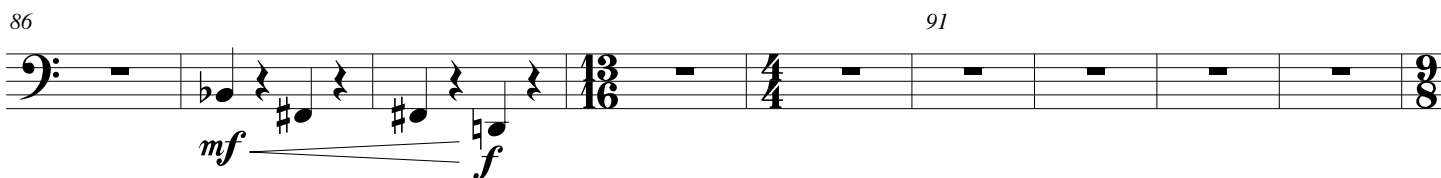
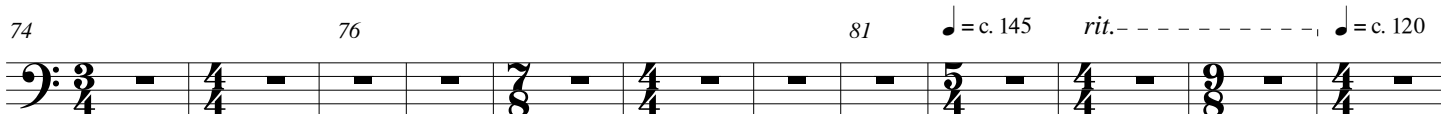
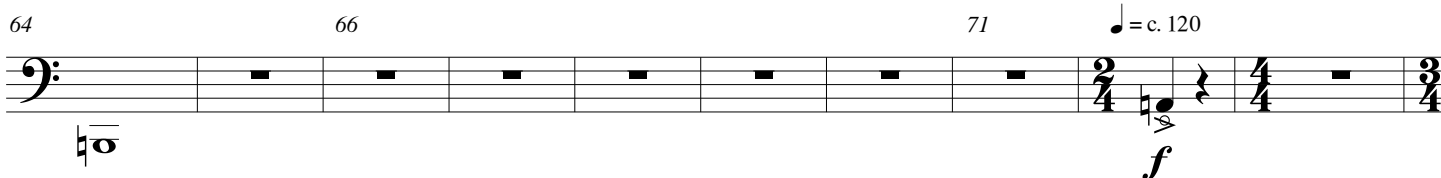
11



*poco rit.* ----- *poco accel.*  
♩ = c. 115 -----



A Tempo ♩ = c. 120



95 101

102 106

110 *accel.* ----- ♩ = c. 130 116

117 *A Tempo* ♩ = c. 120 121 *accel.* ----- ♩ = c. 130

127 ♩ = c. 145 131 ♩ = c. 160

136 141

144 ♩ = c. 140 146 151

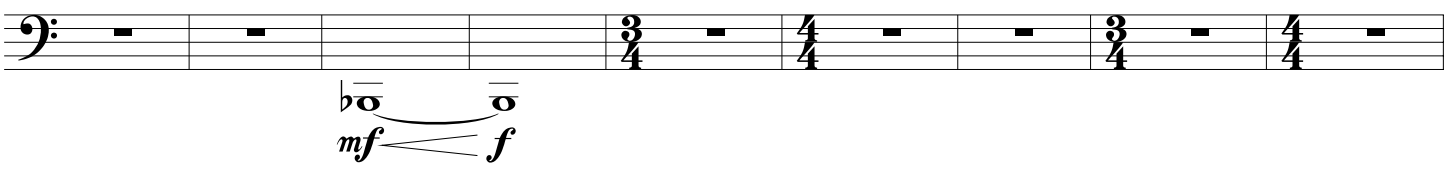
154 156 161 ♩ = c. 120

Detailed description: This page of a musical score for Tuba contains measures 95 through 161. The score is written in bass clef and includes various time signatures: 9/8, 4/4, 3/4, 3/2, 3/4, 4/4, 3/4, 4/4, 3/4, 6/4, and 2/2. Dynamic markings include *mf*, *f*, *ff*, *mf*, *ff*, *mf*, *mf*, *f*, *ff*, *p*, *ff*, *f*, and *ff*. Performance instructions include *accel.* and *A Tempo*. Measure numbers 95, 101, 102, 106, 110, 116, 117, 121, 127, 131, 136, 141, 144, 146, 151, 154, 156, and 161 are indicated. The score features a variety of rhythmic patterns, including eighth notes, quarter notes, and half notes, with some measures containing rests.

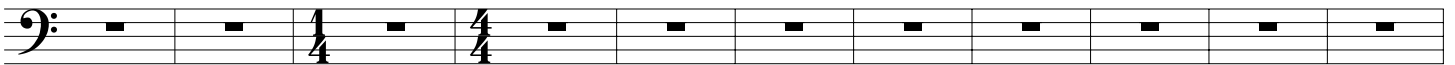
165 166 171



175  $\text{♩} = \text{c. } 65$  181




184 186  $\text{♩} = \text{c. } 70$  191



195 196



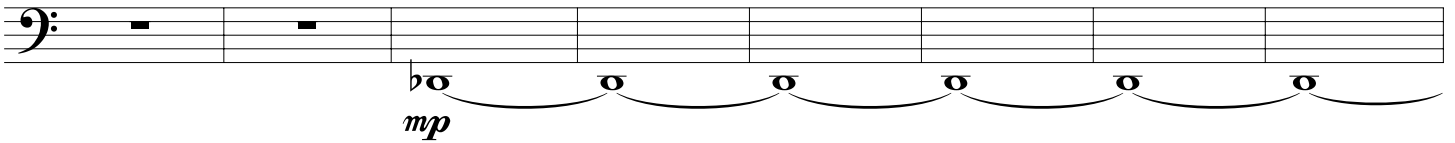
201  $\text{♩} = \text{c. } 120$  206 211



212 216 221



223 226



231



235  $\text{♩} = c. 100$  236

*f / mp* *ff*

Detailed description: This system contains measures 235 and 236. Measure 235 starts with a bass clef and a 3/8 time signature. It features a half note followed by a quarter note. Measure 236 begins with a 4/4 time signature and contains a series of eighth notes. The dynamic markings *f / mp* and *ff* are placed below the staff.

240 241

Detailed description: This system contains measures 240 and 241. Measure 240 is in 7/8 time and contains eighth notes. Measure 241 is in 3/4 time and contains eighth notes. The key signature changes to one sharp (F#).

245 246

Detailed description: This system contains measures 245 and 246. Measure 245 is in 4/4 time and contains eighth notes. Measure 246 is in 3/4 time and contains eighth notes. The key signature changes to two sharps (F# and C#).

250 *molto rit.*  $\text{♩} = c. 120$   $\text{♩} = c. 145$

Detailed description: This system contains measures 250 and 251. Measure 250 is in 6/4 time and contains eighth notes. Measure 251 is in 3/4 time and contains eighth notes. A tempo change to *molto rit.* is indicated above the staff. The tempo markings  $\text{♩} = c. 120$  and  $\text{♩} = c. 145$  are also present.

255 261

*mf*

Detailed description: This system contains measures 255 through 261. Measures 255-257 are rests. Measures 258-261 contain eighth notes. The dynamic marking *mf* is placed below the staff.

262 266

*f* *mf* *f*

Detailed description: This system contains measures 262 through 266. Measure 262 is in 2/4 time and contains eighth notes. Measure 263 is in 4/4 time and contains eighth notes. Measure 264 is in 2/4 time and contains eighth notes. Measure 265 is in 4/4 time and contains eighth notes. Measure 266 is in 2/4 time and contains eighth notes. Dynamic markings *f*, *mf*, and *f* are placed below the staff.

269 271 276

*ff*

Detailed description: This system contains measures 269 through 276. Measure 269 is in 2/4 time and contains eighth notes. Measure 270 is in 4/4 time and contains eighth notes. Measure 271 is in 2/4 time and contains eighth notes. Measure 272 is in 4/4 time and contains eighth notes. Measure 273 is in 2/4 time and contains eighth notes. Measure 274 is in 4/4 time and contains eighth notes. Measure 275 is in 2/4 time and contains eighth notes. Measure 276 is in 4/4 time and contains eighth notes. The dynamic marking *ff* is placed below the staff.

277 281  $\text{♩} = c. 160$  286

Detailed description: This system contains measures 277 through 286. Measures 277-280 are rests. Measure 281 is in 2/4 time and contains eighth notes. Measure 282 is in 4/4 time and contains eighth notes. Measure 283 is in 3/8 time and contains eighth notes. Measure 284 is in 4/4 time and contains eighth notes. Measure 285 is in 2/4 time and contains eighth notes. Measure 286 is in 4/4 time and contains eighth notes. The tempo marking  $\text{♩} = c. 160$  is placed above the staff.

287 291

*f*

294 296 *molto rit.* ---, ♩ = c. 75

*ff* *fff*

299 ♩ = 65 **Inicio Pt. II** 301 306

310 311 316 321

322 326 331

333 336

*mf* *f* *ffp* *f*

340 *rit.* ---, ♩ = c. 55

*mf* *mp*

♩ = c. 62 -- A Tempo I, algo mas lento

344 346 351

*f*

Inicio Pt. III

355 356  $\text{♩} = c. 160$  361

*f* *ff* *subito p* *fff*

363 366 371

374  $\text{♩} = c. 140$  381

*f*

383 386

388 391 **Andante** ( $\text{♩} = c. 100$ )

*mp*

395 396 401  $\text{♩} = c. 95$

403 406

408 **Allegro** ( $\text{♩} = c. 120$ ) 411



478 481 ♩ = c. 145 486

487 *rit.* ----- ♩ = c. 140 (subito)

494 496

501

506 ♩ = c. 148

509 *rit.* ----- ♩ = c. 170 subito & accel. -----

514 ♩ = c. 200 ♩ = c. 170 516 ♩ = c. 145