

Pauken

Marsch der Priester

aus der Schauspielmusik zu Athalia op. 74

Felix Mendelssohn
Bartholdy
(1809 -1847)

Allegro vivace

Measures 1-6 of the drum part. The notation is in bass clef with a common time signature. It features a series of notes with trills (tr) and dynamic markings: *p* < *sf*, *p* < *sf*, *p*, and *cresc.* with a wedge-shaped crescendo hairpin.

Measures 7-12 of the drum part. It includes trills (tr) and dynamic markings: *ff*, *sf*, *ff*, and *ff*. The notation shows a sequence of notes with trills and rests.

17

Measures 17-20 of the drum part. It features triplets (3) and dynamic markings: *ff* and *ff*. The notation includes notes with trills and rests.

25

Measures 25-28 of the drum part. It includes trills (tr) and dynamic markings: *sf* and *ff*. The notation shows notes with trills and rests.

31

Measures 31-34 of the drum part. It features a triplet (3) and a septuplet (7), along with dynamic markings: *f*. The notation includes notes with trills and rests.

45

Measures 45-48 of the drum part. It includes trills (tr) and dynamic markings: *sf* and *ff*. The notation shows notes with trills and rests.

51

Measures 51-56 of the drum part. It features trills (tr) and dynamic markings: *sf* and *ff*. The notation includes notes with trills and rests.

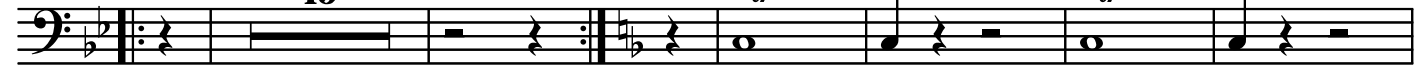
57

Measures 57-60 of the drum part. It includes trills (tr) and a septuplet (7), along with dynamic markings: *sf* and *ff*. The notation shows notes with trills and rests.

15

tr

tr



p < *sf*

p < *sf*

89

tr



p *cresc.*

ff

sf

96

tr

tr

tr



ff

102

3

3

3



ff

108

tr

tr



ff

ff

113

tr

tr

tr

tr

tr



ff

118

tr

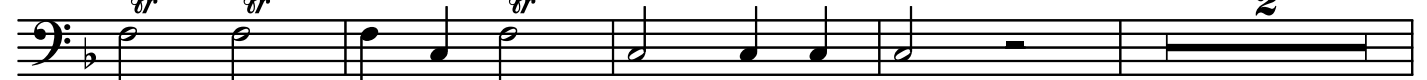
tr

tr

tr

tr

2



124

tr

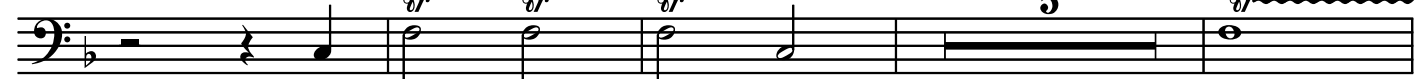
tr

tr

tr

5

tr

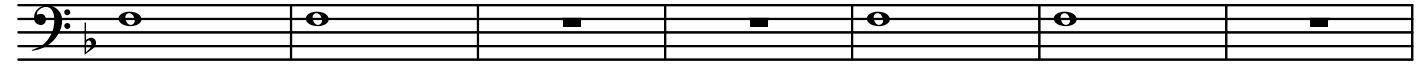


ff

133

tr

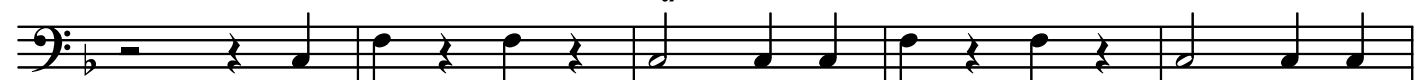
tr



140

tr

tr



145

tr

tr

