

Mus. Mss.

3112

*Stella coeli*

4 voc. e. Org.

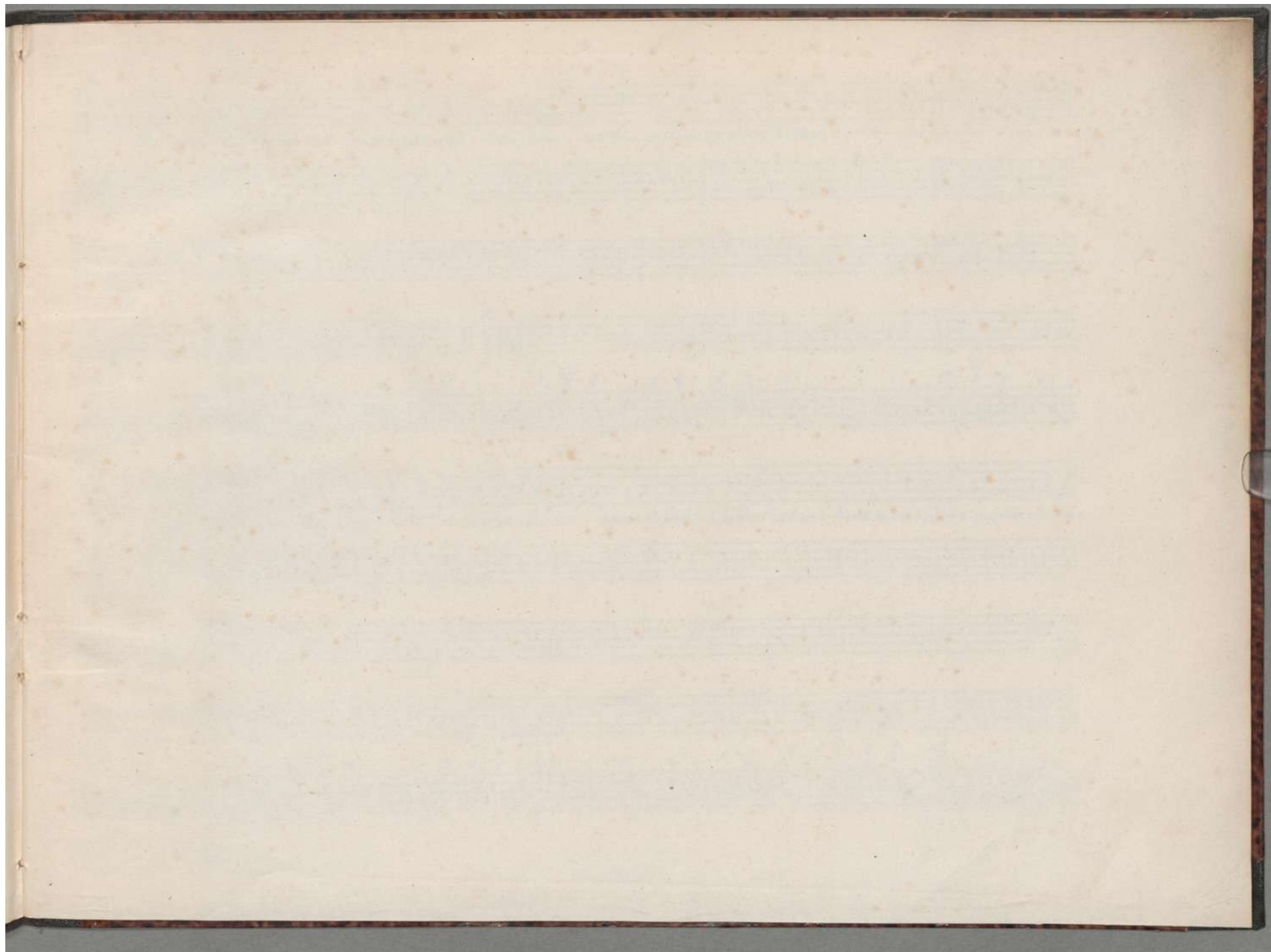
*Michael Haydn*

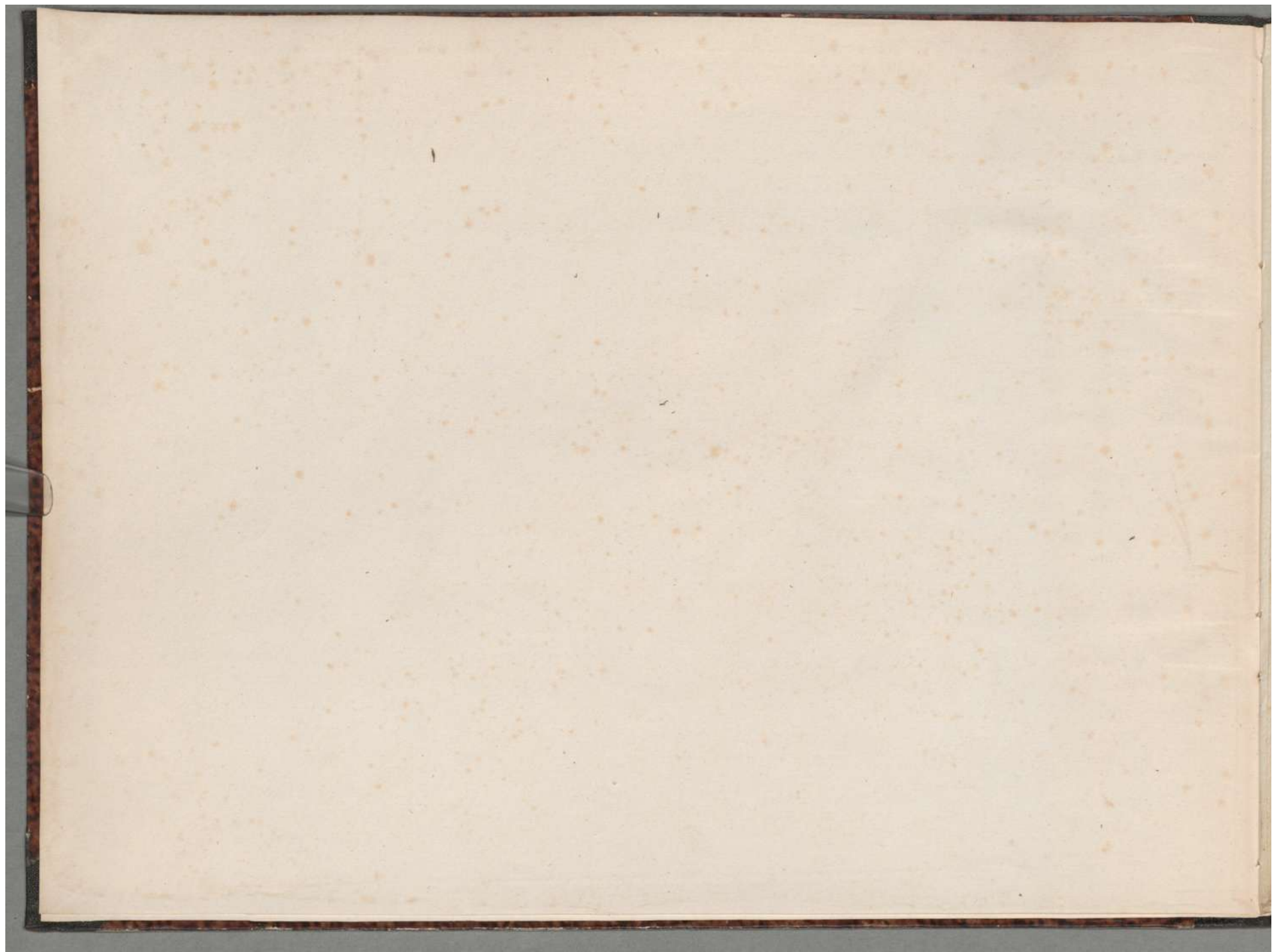
*Autograph.*

Mrs. Mss.

3112.

Haydn, Mich.





Andte.

3112,

Stella caeli extinguitur quae lactavit Dominum mortis pestem quam plantavit primus peccator ho: minum.

The first system of the handwritten musical score consists of a vocal line and two piano accompaniment staves. The vocal line is written in a soprano clef with a treble clef and a key signature of one sharp (F#). The piano accompaniment is written in a grand staff with a bass clef and a key signature of one sharp. The time signature is 2/4. The lyrics are written below the vocal line.

Ista Stella nunc dignetur sidera compe:scere quorum bella plebem cadunt dira mortis dira mortis ul: ce:

The second system of the handwritten musical score continues the vocal line and piano accompaniment. The lyrics are written below the vocal line.

137/5

H = 493

re. O pi:issima Stella ma: ris in pette succurre no: bis succurre no: bis. Audi nos Domina nam Filius tuus  
Dominam Fi = lius



*Adag.*  
nihil negans te hono = rat Salva nos Jesu pro quibus Virgo Mater Mater exo = rat exo = rat.

