

Overture to "Etoile du Nord"

G. Meyerbeer

Tempo di marcia maestosa (metronome de Maelzel: $\text{♩} = 80$)

tres détaché

pp

5

A

8

B

12

pp

15

C

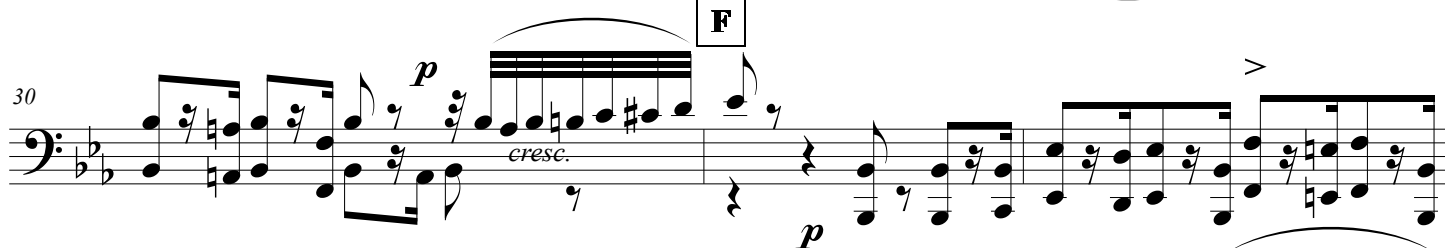
18

ff

D

21

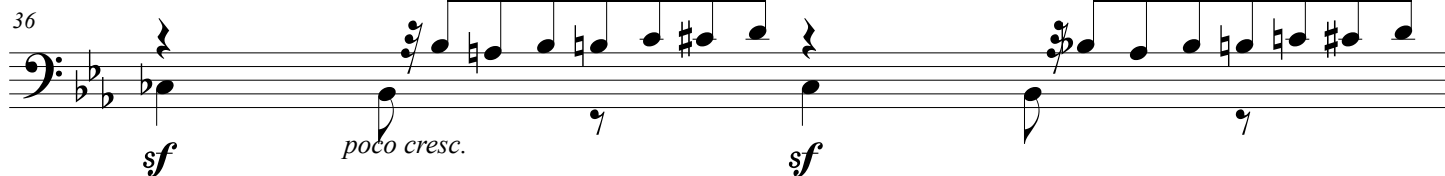
24

E**F**

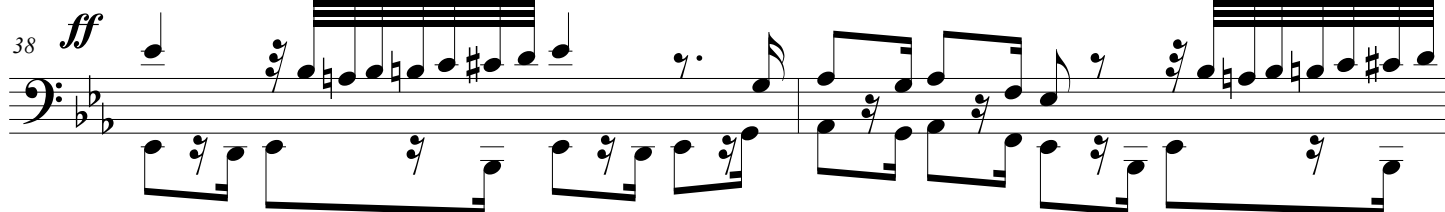
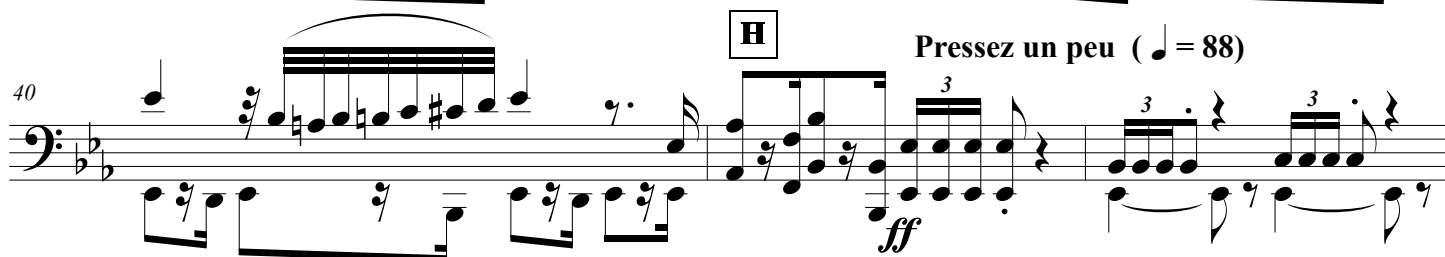
33



36

**G**

38

**H**

Pressez un peu (♩ = 88)

43

a 2

3

45

I

3

47

J

3

49

K

3

52

L

3

58

M

3

légèrement

p

8

8

...

64 1. solo

N

O

P

Q

R

83

88

90

3

f

p

p

légèrement

p

fp

ff

ff

molto cresc.

a 2

ff

a 2

8

S

Measures 94-97: Bassoon part in B-flat major, 3/4 time. The melody consists of eighth and sixteenth notes, with a half note rest in measure 95. A fermata is placed over the final note of measure 97.

96

98

Measures 98-101: Bassoon part. Measure 98 features a continuous sixteenth-note pattern. Measure 100 contains a triplet of eighth notes. Measure 101 begins with a *pp* dynamic and a half note rest. A box labeled 'T' is positioned above measure 100.

102

Measures 102-108: Bassoon part. Measure 102 starts with a *pp* dynamic and a half note rest. Measures 103-108 contain various rhythmic patterns, including eighth and sixteenth notes, with a *pp* dynamic in measure 105. A box labeled 'U' is positioned above measure 106.

109

Measures 109-113: Bassoon part. Measure 109 begins with a *pp* dynamic. Measures 110-113 continue the melodic line with eighth and sixteenth notes, ending with a *p* dynamic. A box labeled 'V' is positioned above measure 111.

114

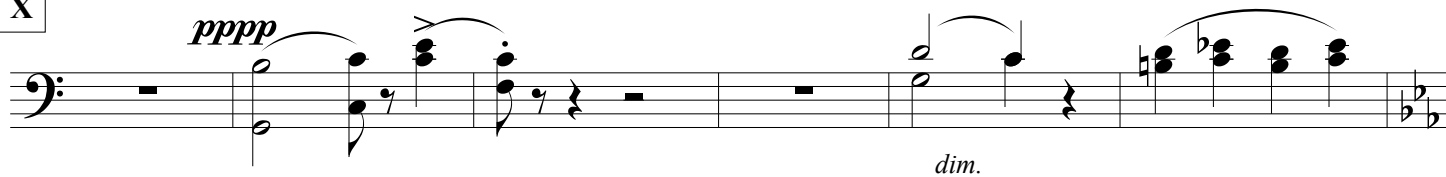
Measures 114-117: Bassoon part. Measure 114 starts with a *pp* dynamic. Measure 115 contains a triplet of eighth notes. Measure 116 begins with a *pp* dynamic and a half note rest. Measure 117 continues the melodic line. A box labeled 'V' is positioned above measure 115, and a box labeled 'a 2' is positioned above measure 116.

W

Tous les instruments doivent jouer aussi
Piano que possible (en guise d'écho)

Measures 118-121: Bassoon part. Measure 118 starts with a *ppp* dynamic. Measures 119-121 continue the melodic line with eighth and sixteenth notes, ending with a *pp* dynamic. A box labeled 'W' is positioned above measure 118. A *poco cresc.* marking is placed above measure 120.

X



Y

