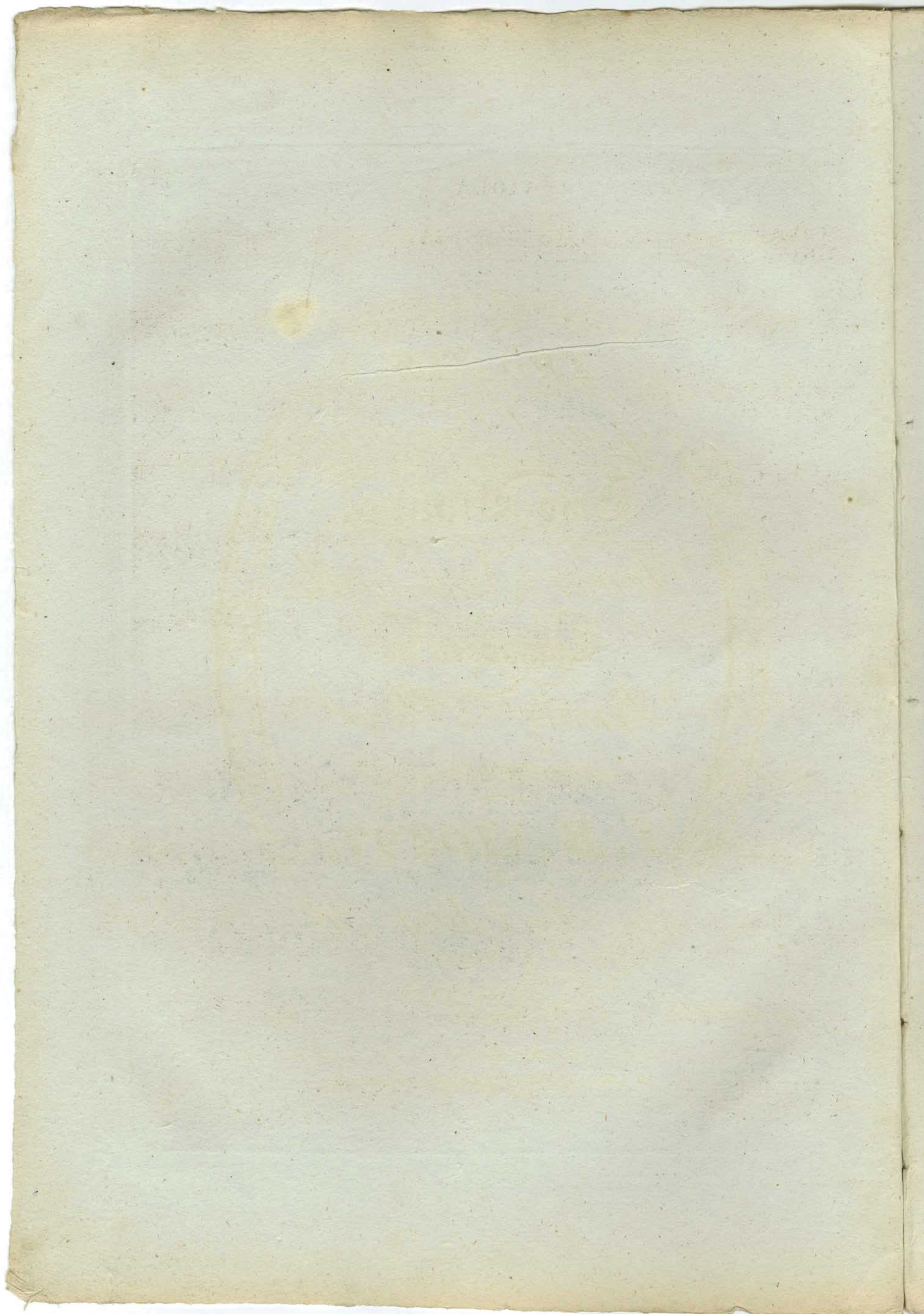


Ent. at Sta. Hall.

Price 8/-

*London, Printed for J. A. Hamilton, Music Seller, to their Royal Highnesses,
the Dukes of Kent & Cambridge, 221, Piccadilly.*



Music
#3111

VIOLA
Allegro

QUARTETTO, 1.

p

fp *fp*

fp *fp* *f*

p

pp *pp* *ff*

pp

cres *ff* *ff*

VIOLA

3

The musical score for Viola consists of 12 staves of music. The key signature is two flats (B-flat and E-flat), and the time signature is 4/4. The score includes various dynamics such as *p* (piano), *f* (forte), *ff* (fortissimo), *fz* (forzando), and *sp* (sforzando). There are also first endings marked with a '1' and a repeat sign. The music features a variety of rhythmic patterns, including eighth and sixteenth notes, and rests.

VIOLA

p

pp *ff* *fz* *fz*

p

f *p*

pp *f*

cres *f* *ff* *p* 2

fp *p*

1 *f* *p*

pp

Adagio *pizzicato* *pp* *col arco*

VIOLA

f *f* *pp* *f* *p* *p* *cres* *p* *pp* *pizz.* *col arco* *f* *p* *f* *p* *f* *pp* (4)

VIOLA

Allegro

1 1 1

p

f *p*

f *p*

ff *fz* *p*

f

p

1 2 3 4 5 6

p *p* *f*

f *p*

pp

1 2 3 4

ff

p

3

f

2

ff *p*

(14)

VIOLA

The musical score for Viola on page 7 consists of 13 staves of music. The key signature is two flats (B-flat and E-flat), and the time signature is 4/4. The score includes various dynamics and performance markings:

- Staff 1: *p* (piano), *ff* (fortissimo), *2* (second ending).
- Staff 2: *p* (piano), *f* (forte), *f* (forte), *1* (first ending), *cres* (crescendo).
- Staff 3: *p* (piano).
- Staff 4: *f* (forte), *p* (piano).
- Staff 5: *ff* (fortissimo), *fz* (forzando), *p* (piano).
- Staff 6: *f* (forte), *pp* (pianissimo).
- Staff 7: *f* (forte), *p* (piano).
- Staff 8: *f* (forte), *p* (piano), *1* (first ending), *2* (second ending), *3* (third ending).
- Staff 9: *ff* (fortissimo), *4* (fourth ending), *5* (fifth ending).
- Staff 10: *fz* (forzando), *fz* (forzando).
- Staff 11: *p* (piano), *pp* (pianissimo), *1* (first ending), *1* (first ending).
- Staff 12: *pp* (pianissimo), *dim* (diminuendo), *pp* (pianissimo).

(14)

VIOLA

All^o molto

QUARTETTO, 2.

The musical score for the Viola part in the second quartet is written across 12 staves. The key signature is G major (one sharp) and the time signature is common time (C). The tempo is marked 'All^o molto'. The score includes various dynamic markings: *f* (forte), *ff* (fortissimo), *p* (piano), and *pp* (pianissimo). There are also first and second endings indicated by '1' and '2' above the notes. The notation includes eighth and sixteenth notes, rests, and slurs.

VIOLA

The musical score for Viola on page 9 consists of 12 staves of music. The key signature is one sharp (F#) and the time signature is 4/4. The score includes various dynamics such as *p* (piano), *f* (forte), *ff* (fortissimo), and *pp* (pianissimo). It also features articulations like *hr* (hairpins) and fingerings indicated by numbers 1, 2, and 3. The music is written in a single system with 12 staves. The first staff begins with a first ending bracket. The second staff starts with a second ending bracket and a *p* dynamic. The third staff has a *f* dynamic. The fourth staff has a *p* dynamic. The fifth staff has a *f* dynamic. The sixth staff has a *f* dynamic. The seventh staff has a *f* dynamic. The eighth staff has a *f* dynamic. The ninth staff has a *ff* dynamic. The tenth staff has a *pp* dynamic. The eleventh staff has a *f* dynamic. The twelfth staff has a *f* dynamic. The score concludes with a double bar line and repeat dots.

VIOLA

The musical score for Viola on page 10 consists of 12 staves. The key signature is G major (one sharp). The dynamics and markings are as follows:

- Staff 1: *p*, *f*, *ff*, *f*
- Staff 2: *f*
- Staff 3: *ff*, 1
- Staff 4: 1
- Staff 5: *ff*, 2, 1, *f*
- Staff 6: *f*, *f*
- Staff 7: *f*, 2
- Staff 8: *pp*, 1, *p*
- Staff 9: 1, *p*, *f*, *pp*
- Staff 10: *f*, 1, *f*
- Staff 11: 1, *f*, *p*
- Staff 12: 1

VIOLA

The main musical score for the Viola part, consisting of five staves. The music is in G major and 3/4 time. It begins with a treble clef and a key signature of one sharp (F#). The first staff contains measures 1-4, with dynamics *f* and *pp*. The second staff contains measures 5-8, with dynamics *p* and *pp*. The third staff contains measures 9-12, with dynamics *pp*, *cres*, *f*, and *ff*. The fourth staff contains measures 13-14, with a first ending bracket and dynamics *f* and *ff*. The fifth staff contains the final measure of the section.

Tempo di
Menuetto con
Variazioni

The musical score for the Minuet with Variations, consisting of two staves. The music is in G major and 3/4 time. The first staff contains measures 1-4, with dynamics *pizz* and *p*. The second staff contains measures 5-8, with dynamics *p* and *pp*.

Var: 1.

The musical score for Variation 1, consisting of two staves. The music is in G major and 3/4 time. The first staff contains measures 1-4, with dynamics *col arco* and *p*. The second staff contains measures 5-8, with dynamics *p* and *pp*.

Var: 2.

The musical score for Variation 2, consisting of two staves. The music is in G major and 3/4 time. The first staff contains measures 1-4, with dynamics *pp*. The second staff contains measures 5-8, with dynamics *pp* and *p*.

VIOLA

RONDO
Allegro

The musical score for Viola, Rondo Allegro, page 13, is written in G major (one sharp) and 2/4 time. It consists of 13 staves of music. The first staff begins with a piano (*p*) dynamic. The second staff features a forte (*f*) dynamic. The third and fourth staves continue with forte dynamics. The fifth staff includes a first ending marked with a '1'. The sixth staff has a piano (*p*) dynamic. The seventh staff features a first ending marked with a '1'. The eighth and ninth staves contain a series of chords, with dynamics ranging from *fp* to *f*. The tenth staff includes a first ending marked with a '1' and a dynamic of *poc f*. The eleventh staff has a piano (*p*) dynamic. The twelfth and thirteenth staves conclude the piece with a forte (*ff*) dynamic and a double bar line with a fermata.

VIOLA

The musical score for Viola on page 14 consists of ten staves of music. The key signature is one sharp (F#) and the time signature is 4/4. The score includes various dynamics such as *p*, *f*, *fp*, and *ff*. It features first and second endings, with the first ending marked '1' and the second ending marked '2'. The music concludes with a double bar line and the word 'Fine'.