

COURANTE

(from: *Terpsichore*, TMA 56 - 1612)

for Flute and Harpsichord

Score (00':55")

Anonymous

Allegretto ♩ = 61

Arr. Michel Rondeau

Flute

Harpsichord

Detailed description: This system contains the first eight measures of the piece. The Flute part is written in a treble clef with a 3/8 time signature. It begins with a repeat sign and a first ending bracket. The Harpsichord part is written in a grand staff (treble and bass clefs) and provides a rhythmic accompaniment with chords and moving lines in both hands.

Fl.

Hpschd.

Detailed description: This system contains measures 9 through 19. The Flute part continues with a second ending bracket. The Harpsichord part continues with its accompaniment. Measure 19 ends with a repeat sign and a first ending bracket.

Fl.

Hpschd.

Detailed description: This system contains measures 20 through 29. The Flute part continues with a second ending bracket. The Harpsichord part continues with its accompaniment. Measure 29 ends with a repeat sign and a first ending bracket.

COURANTE

(from: *Terpsichore*, TMA 56 - 1612)

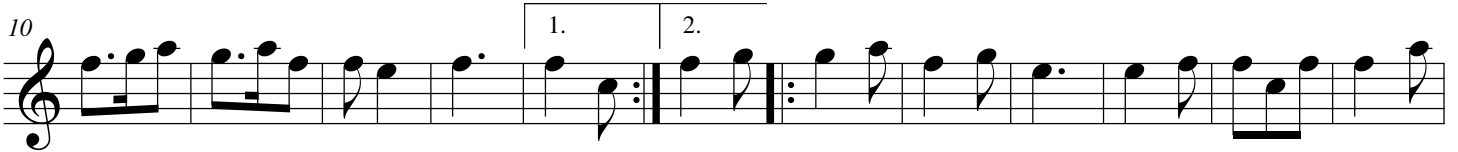
for Flute and Harpsichord

Flute

Anonymous

Arr. Michel Rondeau

Allegretto ♩ = 61



COURANTE

(from: *Terpsichore*, TMA 56 - 1612)
for Flute and Harpsichord

Anonymous
Arr. Michel Rondeau

Harpsichord

Flute

Allegretto ♩ = 61

Harpsichord

Fl.

1. 2.

Hpschd.

Fl.

1. 2.

Hpschd.