

Sonata a Quattro, (SPCM No. 10)

Johann Heinrich Schmelzer (c. 1620-23 - 1680)

Soprano Recorder

The image displays a musical score for the Soprano Recorder part of the Sonata a Quattro (SPCM No. 10) by Johann Heinrich Schmelzer. The score is written in treble clef with a common time signature (C). It consists of ten staves of music, each beginning with a measure number: 6, 11, 16, 24, 30, 35, 40, 46, 51, and 58. The notation includes various rhythmic values such as eighth, sixteenth, and thirty-second notes, as well as rests and accidentals. There are three distinct triplets marked with a '3' over the notes: one at measure 16, one at measure 24, and one at measure 51. The key signature is one sharp (F#), and the time signature changes to 3/2 at measure 40.

62

68

77

82

92

98

105

111

117

123

Sonata a Quattro, (SPCM No. 10)

Johann Heinrich Schmelzer (c. 1620-23 - 1680)

Alto Recorder

The image displays a musical score for the Alto Recorder part of the Sonata a Quattro (SPCM No. 10) by Johann Heinrich Schmelzer. The score is written in treble clef with a common time signature (C). It consists of ten staves of music, each beginning with a measure number: 6, 12, 17, 22, 28, 33, 41, 49, 55, and 60. The notation includes various rhythmic values such as eighth, sixteenth, and thirty-second notes, as well as rests and accidentals. There are several dynamic markings, including accents and slurs, and some measures contain numerical figures (2, 3) indicating fingerings or articulation. The key signature is one sharp (F#), and the time signature changes to 3/2 at measure 41.

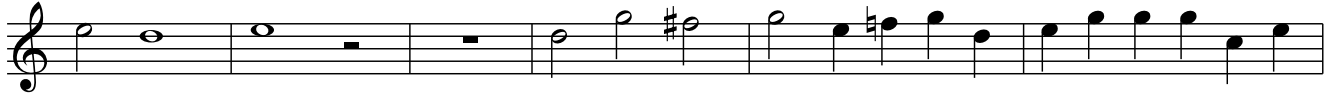
68



75



82



88



95



101



108



113



118



124



Sonata a Quattro, (SPCM No. 10)

Johann Heinrich Schmelzer (c. 1620-23 - 1680)

Tenor Recorder

Musical score for Tenor Recorder, Sonata a Quattro (SPCM No. 10) by Johann Heinrich Schmelzer. The score is written in treble clef with a common time signature (C). The piece consists of 64 measures, divided into 10 systems of 7 measures each. The key signature is one sharp (F#). The score includes various rhythmic values, including eighth and sixteenth notes, and rests. A fermata is present at the end of the 12th measure, and a second ending bracket is shown above the 12th measure. The score concludes with a final sharp sign at the end of the 64th measure.

7

12

18

23

29

34

39

47

55

64

71



77



83



89



98



104



111



118



125



Sonata a Quattro, (SPCM No. 10)

Johann Heinrich Schmelzer (c. 1620-23 - 1680)

Bass Recorder



7



13



18



26



32



37



45



52



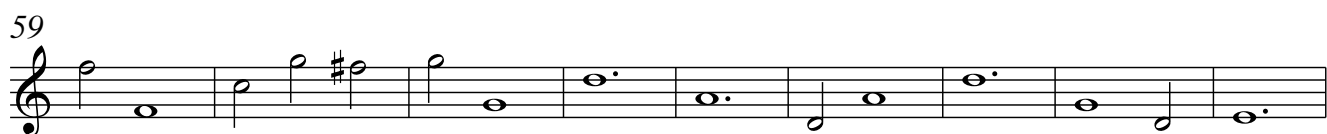
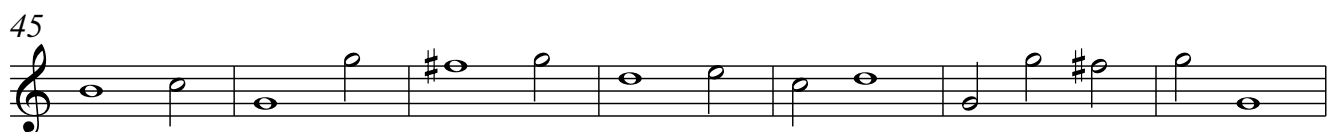
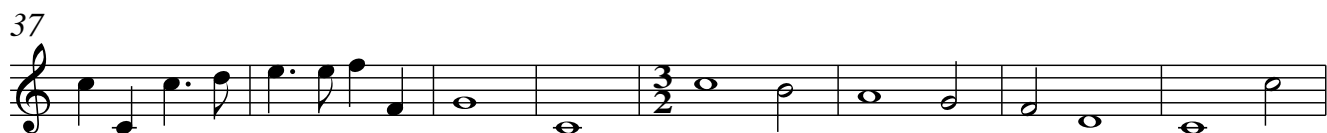
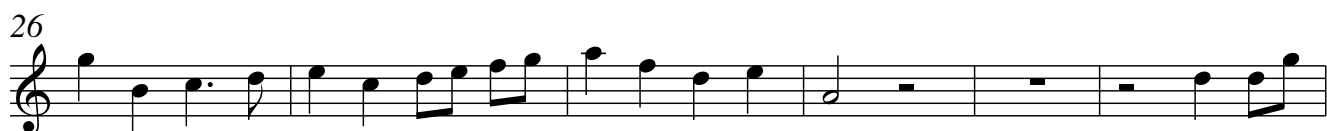
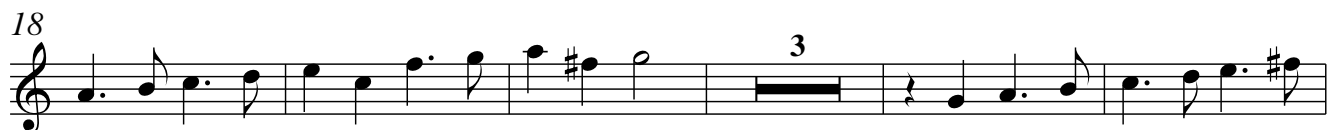
59



Sonata a Quattro, (SPCM No. 10)

Johann Heinrich Schmelzer (c. 1620-23 - 1680)

Greatbass Recorder



Sonata a Quattro, (SPCM No. 10)

Johann Heinrich Schmelzer (c. 1620-23 - 1680)

Greatbass Recorder



7



13



18



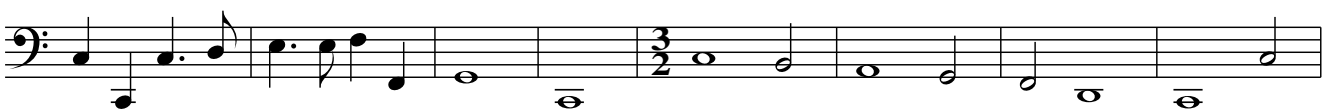
26



32



37



45



52



59



