



C. 2 - R

[G. B. Lampugnani]
[Trisonal.]

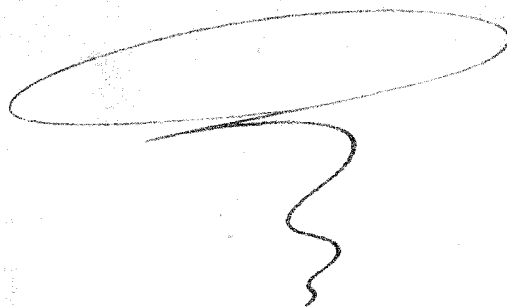
Sinfonia in Es dur.
a 3. Va.

Due Violini,

e

Basso. //

item Clarinet



Nº 149.

Brioschi

[Allegro moderato]
Sinfonia

[Eso Dur]

N.º 149

G. B. Lampugnani

Pioschi

Op. 12

Presto

dolce



A handwritten musical score consisting of ten staves. The notation is in a single system, with various musical symbols including notes, rests, and dynamic markings. The first staff begins with a treble clef and a key signature of one flat. The notation is dense, with many notes and rests. There are several dynamic markings: *for* (written above the second staff), *pia* (written above the third staff), and *for* (written below the fourth staff). The score is written in a cursive, handwritten style, typical of a composer's sketch or a personal manuscript. The paper is aged and slightly discolored, with some visible wear and tear at the edges.

Handwritten musical score on ten staves. The notation includes various musical symbols such as notes, rests, and dynamic markings. The score is written in a single system across the ten staves. The notation includes various musical symbols such as notes, rests, and dynamic markings. The score is written in a single system across the ten staves.

Dynamic markings include *p* (piano) at the beginning of the first staff, *f* (forte) on the eighth staff, and *f* (forte) on the ninth staff. There is also a handwritten *for* on the eighth staff.



A handwritten musical score consisting of ten staves. The notation is in a single system, with each staff beginning with a treble clef and a key signature of one sharp (F#). The music is written in a fluid, cursive style. The first staff contains a melodic line with various note values, including eighth and sixteenth notes. The second staff continues this line, with some notes beamed together. The third staff features a series of quarter notes, some with slurs. The fourth staff has a series of eighth notes, some with slurs. The fifth staff contains a series of quarter notes, some with slurs. The sixth staff has a series of eighth notes, some with slurs. The seventh staff contains a series of quarter notes, some with slurs. The eighth staff has a series of eighth notes, some with slurs. The ninth staff contains a series of quarter notes, some with slurs. The tenth staff has a series of eighth notes, some with slurs. The word *pia* is written in the seventh staff, and the word *fort* is written in the ninth staff. The score ends with a double bar line on the tenth staff.

A handwritten musical score consisting of ten staves. The notation is in a single system, with each staff beginning with a clef (likely a soprano or alto clef) and a key signature of one sharp (F#). The music is written in a fluid, cursive style. The first staff contains a treble clef and a key signature of one sharp. The second staff has the tempo marking *Andante e piano sempre* written in cursive. The notation includes various note values, rests, and dynamic markings. The paper shows signs of age, with some staining and wear along the edges.

Andante e piano sempre

A handwritten musical score consisting of ten staves. The notation is in a single system, likely for a piano or similar instrument. The music features a variety of note values, including eighth, sixteenth, and thirty-second notes, as well as rests and dynamic markings. The staves are numbered 1 through 10. The handwriting is fluid and characteristic of a composer's sketch. The paper shows signs of age, with some staining and wear at the corners.

10

Presto





[Universal.]
Sinfonia *[Ess-Dur]* *Violino Primo*

G.B. Sempagiani

G2-R

Presto

p

dolce

forte

p

52

p

p

p



Handwritten musical score on ten staves. The notation includes various musical symbols such as notes, rests, and dynamic markings. The score is written in a single system across the staves.

Key markings and features include:

- tr* (trill) marking above the first staff.
- pia* (piano) marking above the fourth staff.
- tr* (trill) marking above the eighth staff.
- 89* (page number) written below the ninth staff.
- A double bar line is present at the end of the ninth staff.

The notation is dense and appears to be a complex piece of music, possibly for a solo instrument or a small ensemble.

Andante 
piano

Presto



[Trasferenzi]
Sinfonia [Ess-Dur]

Violino Secondo

S. B. Cappuccini

C. R.

Allegro

dolce

pia



A handwritten musical score consisting of 11 staves. The notation is in treble clef with a key signature of one sharp (F#). The music features a variety of note values, including eighth, sixteenth, and quarter notes, as well as rests. There are several dynamic markings: *fort* (forte) appears on the 5th and 10th staves, and *pia* (piano) appears on the 4th and 9th staves. The score concludes with a double bar line on the 11th staff, with the number 88 written below it. The handwriting is fluid and characteristic of a composer's draft.

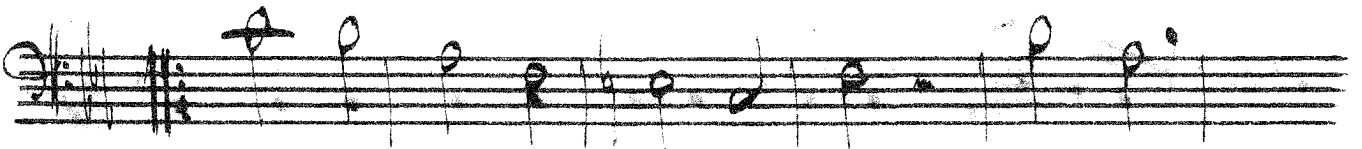
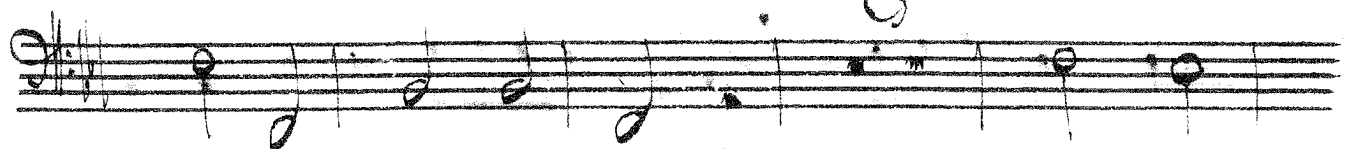
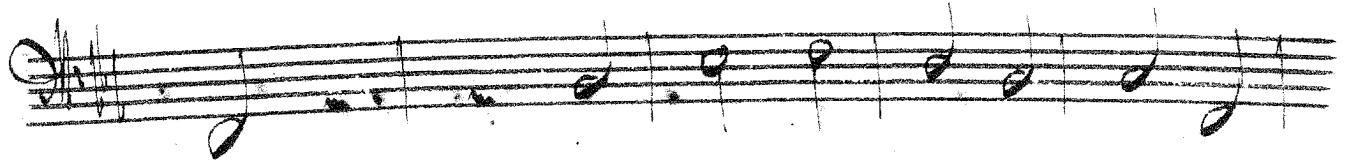
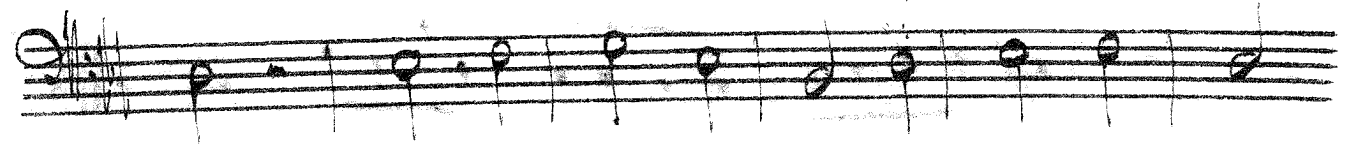
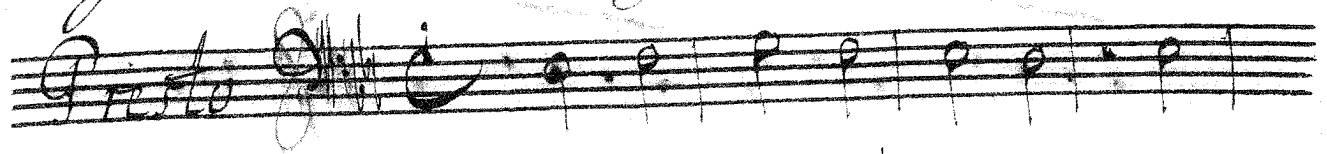
Andante

This is a handwritten musical score for a piece titled "Andante". The score is written on ten staves, each beginning with a treble clef and a key signature of one flat (B-flat). The tempo is indicated by the word "Andante" at the beginning of the first staff. The music features a variety of note values, including eighth, sixteenth, and thirty-second notes, as well as rests. There are several measures with complex rhythmic patterns, including triplets and sixteenth-note runs. A double bar line with a repeat sign is present in the sixth staff, and another double bar line with a repeat sign is in the ninth staff. The piece concludes with the word "Presto" written at the beginning of the tenth staff, which starts with a new key signature of two flats (B-flat and E-flat). The handwriting is fluid and characteristic of a composer's sketch.

Presto



Sinfonia [Dissonanz] *Das* G.B. *Kempfer* C 2-R



Handwritten musical score on ten staves. The notation includes various note values (quarter, eighth, and sixteenth notes), rests, and dynamic markings such as *p* (piano) and *for* (forte). The score concludes with a double bar line on the tenth staff.

Two empty musical staves at the bottom of the page.

Andante *piano*

Presto

