

KARL DITTERS VON DITTERSDORF

Sinfonische Konzertante

für Kontrabaß und Bratsche

Symphony concertante

for Double-bass and Viola

mit Begleitung v. Streichorchester, 2 Oboen u. 2 Hörnern

with accompaniment of string orchestra, 2 Oboes and 2 Horns

Zum ersten Male herausgegeben v. Prof. Dr. Wilhelm Altmann

Edited for the first time by Prof. Dr. Wilhelm Altmann

Oboe I

I. Allegro

Tutti *f* 1 10 *ff* *Solo* 3 20 7 *Tutti* *ff* 1 30 1 1 *Tutti* 40 *Solo* *Tutti* 50 *Solo* 7 60 10 70 *Tutti* *f* 1 80 *Solo* 6 90 3 1 1 1 100 1 *p* *Tutti* *f* *Solo* 3 110 1 *Tutti* 120

EDWIN F. KALMUS & CO., INC.

Publishers of Music
Boca Raton, Florida

Oboe I

3

II. Andantino tacet

III. Menuetto

Menuetto D. C.

The musical score for the Menuetto section is written for Oboe I. It consists of three staves. The first staff begins with a treble clef, a key signature of two sharps (F# and C#), and a 3/4 time signature. The music starts with a forte (f) dynamic. The second staff continues the melody, with measures 1, 10, 7, and 20 marked above. The third staff is labeled 'Trio' and contains measures 5, 30, 2, 7, 40, 10, and 50. The section concludes with a double bar line and the instruction 'Menuetto D. C.'.

IV. Allegro ma non troppo

The musical score for the Allegro ma non troppo section is written for Oboe I. It consists of ten staves. The first staff begins with a treble clef, a key signature of two sharps (F# and C#), and a 3/4 time signature. The music starts with a forte (f) dynamic. The section is marked with 'Solo 2' and 'Tutti' alternations. The second staff continues the melody, with measures 10, 20, Solo 9, 30, and 6 marked above. The third staff is labeled 'Tutti' and contains measures 40, Solo 3, Tutti, Solo 3, 50, and Tutti. The fourth staff contains measures 60, Solo 2, Tutti, Solo 2, and Tutti. The fifth staff contains measures 70, Tutti, Solo 1, Tutti, and Solo 1. The sixth staff contains measures 80, Tutti, Solo, and Tutti. The seventh staff contains measures 90, 1, and Tutti. The eighth staff contains measures 100, 2, and Tutti. The ninth staff contains measures 110, 2, and Tutti. The tenth staff contains measures 120, 5, and Tutti. The section concludes with a double bar line.

Symphony Concertante

Oboe 1

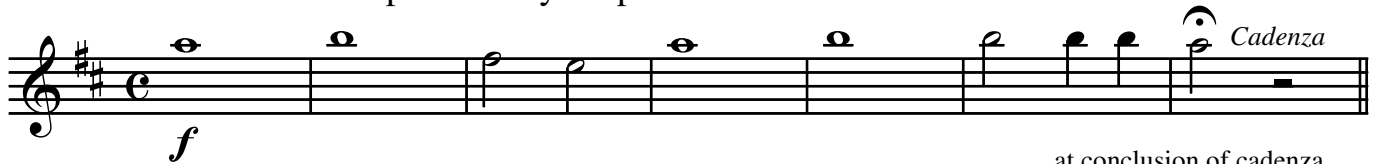
Mvt. I insert

Dittersdorf

Instructions:

After measure 110 of your published part, play this insert.

At the conclusion of the cadenza, play from
measure 111 to the end as printed in your part.



at conclusion of cadenza,
play from measure 111 to end
as printed in part