

# MINUET in D MINOR

(from: 'New Minuet' for Harpsichord - 2nd part of 'Musick's Hand-Maid',  
ZT 689 - London - 1689)  
for Trumpet & Organ

Score (00':45")

Henry Purcell (1658 - 1695)

Arr. Michel Rondeau

Moderato ♩ = 100

Trumpet in C

Organ

Detailed description: This block contains the first six measures of the score. The Trumpet in C part is written in a single treble clef staff with a key signature of one flat (Bb) and a 3/4 time signature. The Organ part consists of two staves: a treble clef staff and a bass clef staff. The organ accompaniment features a steady bass line and a treble line with chords and moving lines. The tempo is marked 'Moderato' with a quarter note equal to 100 beats per minute.

C Tpt.

7

Fine

D.C. al Fine

7

Org.

Fine

D.C. al Fine

Detailed description: This block contains the final six measures of the score, starting at measure 7. The C Trumpet part and the Organ part both feature a repeat sign at the beginning of measure 7. The organ part includes a 'Fine' marking at the end of measure 8 and a 'D.C. al Fine' marking at the end of measure 12. The trumpet part also includes a 'D.C. al Fine' marking at the end of measure 12. The organ part has a more complex texture with chords and moving lines in both staves.

# MINUET in D MINOR

(from: 'New Minuet' for Harpsichord - 2nd part of 'Musick's Hand-Maid',  
ZT 689 - London - 1689)  
for Trumpet & Organ

## Trumpet in C

Henry Purcell (1658 - 1695)  
Arr. Michel Rondeau

Moderato ♩ = 100

7

Fine

D.C. al Fine

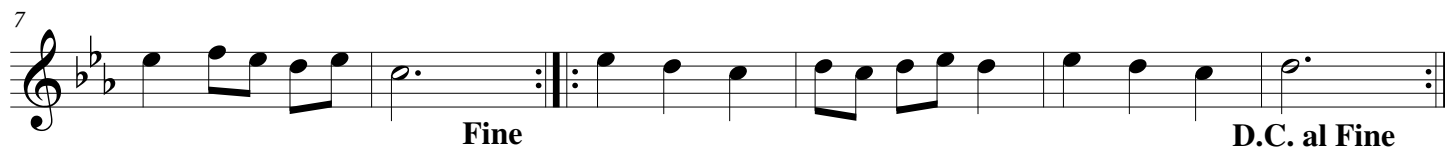
# MINUET in D MINOR

(from: 'New Minuet' for Harpsichord - 2nd part of 'Musick's Hand-Maid',  
ZT 689 - London - 1689)  
for Trumpet & Organ

## Trumpet in D

Henry Purcell (1658 - 1695)  
Arr. Michel Rondeau

Moderato ♩ = 100



# MINUET in D MINOR

(from: 'New Minuet' for Harpsichord - 2nd part of 'Musick's Hand-Maid',  
ZT 689 - London - 1689)  
for Trumpet & Organ

Henry Purcell (1658 - 1695)

Arr. Michel Rondeau

## Organ

Trumpet in C

Moderato ♩ = 100

Organ

Detailed description: This block contains the first six measures of the piece. The Trumpet in C part is written in a single staff with a treble clef, a key signature of one flat (B-flat), and a 3/4 time signature. The Organ part consists of two staves, treble and bass clefs, with a key signature of one flat and a 3/4 time signature. The tempo is marked 'Moderato' with a quarter note equal to 100 beats per minute. The organ accompaniment features a steady bass line and a more active treble line with some grace notes.

C Tpt.

Fine

D.C. al Fine

Org.

Fine

D.C. al Fine

Detailed description: This block contains the final four measures of the piece, starting at measure 7. The C Trumpet part has a treble clef, a key signature of one flat, and a 3/4 time signature. The Organ part has two staves, treble and bass clefs, with a key signature of one flat and a 3/4 time signature. Both parts end with a double bar line and repeat signs. The organ part includes a 'D.C. al Fine' instruction, indicating a first ending. The trumpet part also includes a 'D.C. al Fine' instruction.