

To my Friend Dr. E. D. FOREE, Louisville, Ky.

# Write Me a Letter

## From Home.

### A Beautiful Song and Chorus.

BY

## WILL. S. HAYS.

Piano Song. (4)    Guitar Song. (3½)  
Fantasia by Hoffman.    (7½)

Brilliant Var. by Grobe. (6)  
Variations by Paoler. (5)  
Polka Redowa, Dressler. (3½)

Waltz by Mack. (4)  
Schottisch by Mack. (2)

THE FOLLOWING ARE BY THE SAME AUTHOR, THEY ARE ALL GOOD.

'Nora O'Neil.' 'Driven from Home.' 'No Name.' 'Jessie.' 'Jessie Dean.' 'Take me back Home.' 'Little Sam.' 'Shamus O'Brien.'  
'The Moon is out to-night, Love.' 'Good bye, Old Home.' 'Darling Kate.' 'Kiss me good-bye, Darling.' 'Down by the deep  
sad Sea.' 'My Southern sunny Home.' 'Beautiful Girl of the South.' 'We parted by the River Side.' 'Mrs.  
Jinks of Madison Square.' 'You've been a friend to me.' 'I'm still a friend to you.' 'Old Uncle Ben.'  
'Coraline.' 'Gay young Clerk.' 'Kitty Ray.' 'Prettiest Girl I know.' 'Katy McFarlan.'  
'O! let me kiss the Baby.' 'My Father is growing old.' 'Laura Lee.' &c.

New York: JOHN L. PETERS. J. L. PETERS & Co. St. Louis.  
599 BROADWAY. 212 NORTH 5th St.

Cincinnati: J. J. DOBMEYER & Co. New Orleans: L. GRUNEWALD. Galveston: T. GOGGAN. Boston: WHITE, SMITH & PERRY.

Entered according to act of Congress, A.D. 1869, by J. L. PETERS, in the Clerk's office of the U.S. Dist. Court for the Eastern Dist. of New Jersey.

WARREN N.Y.  
Music Stereotype.

# WRITE A LETTER FROM HOME.

Words and Music by

W. S. HAYS.



1. Lone - ly I sit me and weep, Weep as I have not for  
 2. I think of the old fash - ioned cot, I've left it for ma - ny a

The vocal melody is written on a single staff with a treble clef. The piano accompaniment is written on two staves (treble and bass clefs). The lyrics are aligned with the vocal melody.

years; . . . Why do mine eyes fail to keep. . . .  
 year; . . . The last words, God bless you; I've got . . . . From

The vocal melody continues on a single staff with a treble clef. The piano accompaniment continues on two staves (treble and bass clefs). The lyrics are aligned with the vocal melody.

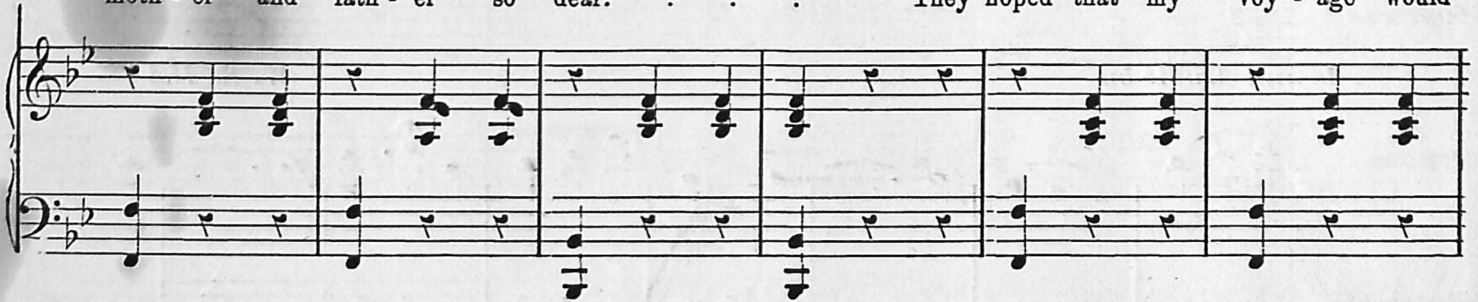


Cres.

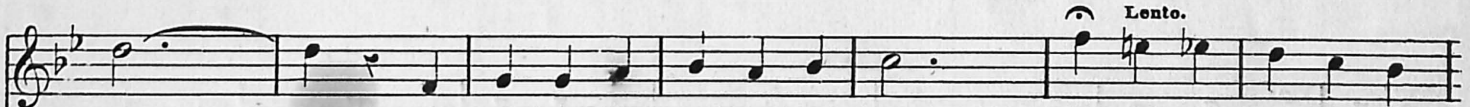


Back these af - fec - tion - ate tears?  
moth - er and fath - er so dear.

I think of dear ones o'er the  
They hoped that my voy - age would



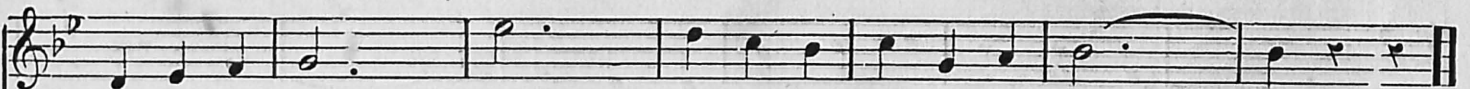
Lento.



sea,  
be

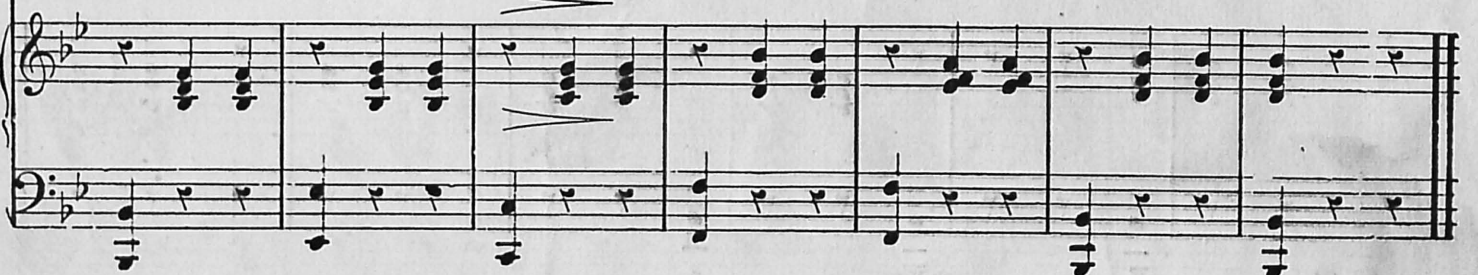
Who love me where ev - er I roam;  
A pleas - ant one ov - er the foam;

Oh! go to them,  
Oh! some one go and



tell them for me,  
tell them for me,

To write me a let - ter from home.  
To write me a let - ter from home.



**Soprano 1.** Have they for - got - ten me now, . . . Or do they ex -

**Soprano 2.** *p*

**Tenore.** Have they for - got - ten me now, . . . Or do they ex

**Basso.**

**Piano.** *p* *ff*

pect me to come? . . . No, no; Go and tell them for

*p*

pect me to come? . . . No, no; Go and tell them for

*p*

*ff* *p*





me, To write me a let - ter from home. . .

me, To write me a let - ter from home. . .

This system contains two vocal staves, likely for Soprano and Alto. Both staves begin with a half note G4, followed by a quarter rest, then a half note A4, and continue with a melody of quarter and eighth notes. The lyrics "me, To write me a let - ter from home. . ." are written below the notes. The key signature has two flats (Bb and Eb).

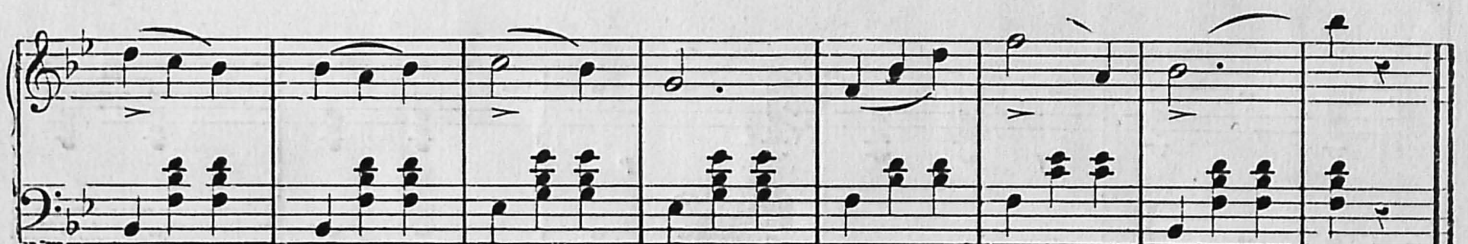


This system shows the piano accompaniment for the first vocal system. The right hand plays chords and single notes, while the left hand plays a steady eighth-note accompaniment. The key signature is Bb and Eb.



*ff*

This system shows the piano accompaniment for the second vocal system. The right hand continues the melody, and the left hand plays chords. The dynamic marking *ff* (fortissimo) is present at the beginning. The key signature is Bb and Eb.



This system shows the piano accompaniment for the third vocal system. The right hand continues the melody, and the left hand plays chords. The key signature is Bb and Eb.