

L'ART de L'ARCHET

Contenant 30 Variations

Pour Le Violon

Avec Accompagnement de Basse - Altlibitum

Composées

Sur la belle Gavotte d'Archangelo Corelli

PAR

G. TARTINI

Prix 6^f »

n. 1855

A PARIS

chez BENOIT aîné, Graveur et Editeur de musique, rue Meslay 40, (au 2^m)

Mus. 2456-R-501



1

J. Benoit



204

▽



Art. de Parchet
Par Martini.

Andante.

1^{re} Varia:

2^{me} Varia:

3^{me} Varia:

4^{me} Varia:

5^{me} Varia:

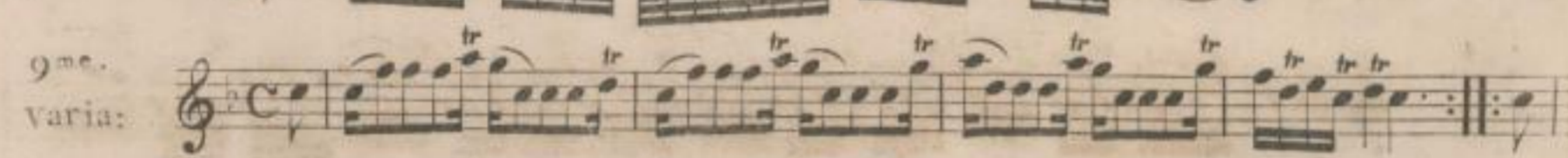
6^{me}
Varia: 



7^{me}
Varia: 



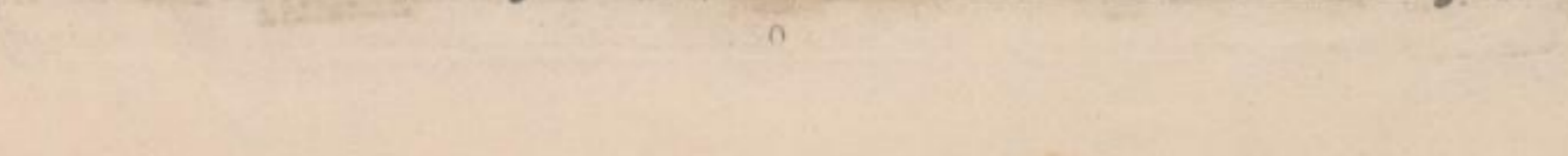
8^{me}
Varia: 

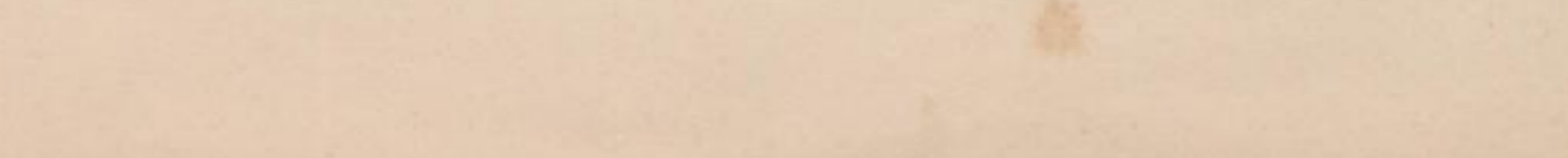


9^{me}
Varia: 



10^{me}
Varia: 



Basse
continue 

4 VIOLON

11.^{me}
Varia:

12.^{me}
Varia:

13.^{me}
Varia:

VIOLON

14.^{me}
Varia:

15.^{me}
Varia:

16.^{me}
Varia:

17.^{me}
Varia:

Basse
continue

VIOLON

18.^{me}
Varia:

Musical notation for the 18th variation, featuring a treble clef, common time signature, and a series of sixteenth-note runs with trills and triplets.

19.^{me}
Varia:

Musical notation for the 19th variation, featuring a treble clef, common time signature, and a series of sixteenth-note runs with trills and triplets.

20.^{me}
Varia:

Musical notation for the 20th variation, featuring a treble clef, common time signature, and a series of sixteenth-note runs with trills and triplets.

21.^{me}
Varia:

Musical notation for the 21st variation, featuring a treble clef, common time signature, and a series of sixteenth-note runs with trills and triplets.

22.^{me}
Varia:

Musical notation for the 22nd variation, featuring a treble clef, common time signature, and a series of sixteenth-note runs with trills and triplets.

VIOLON

7

The first system of the Violon part consists of four staves. The top two staves feature complex rhythmic patterns with many sixteenth and thirty-second notes, often beamed together. The bottom two staves continue these patterns, with some trills (tr) and slurs. The music is written in a treble clef with a key signature of one flat.

23^{me}

Varia:

The 23rd variation consists of two staves. It begins with a treble clef, a common time signature (C), and a key signature of one flat. The notation includes trills (tr) and rhythmic patterns of eighth and sixteenth notes. There are some markings like '8^{va}' and 'locu' above the staff.

24^{me}

Varia:

The 24th variation consists of two staves. It begins with a treble clef, a common time signature (C), and a key signature of one flat. The notation includes trills (tr) and rhythmic patterns of eighth and sixteenth notes. There are some markings like '8^{va}' and 'locu' above the staff.

25^{me}

Varia:

The 25th variation consists of two staves. It begins with a treble clef, a common time signature (C), and a key signature of one flat. The notation includes trills (tr) and rhythmic patterns of eighth and sixteenth notes. There are some markings like '8^{va}' and 'locu' above the staff.

Basse
continue

The Basse continue part consists of one staff with a bass clef, a common time signature (C), and a key signature of one flat. The notation includes rhythmic patterns of eighth and sixteenth notes.

VIOLON

26.^{me}
Varia: 

27.^{me}
Varia: 

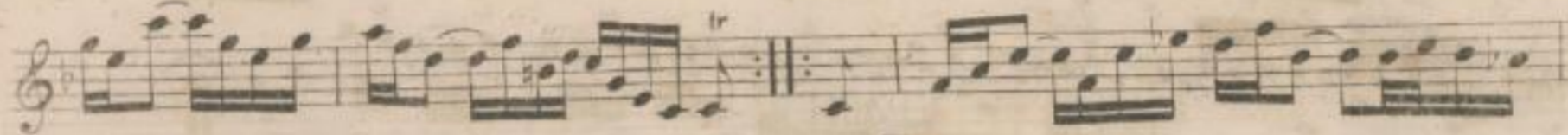
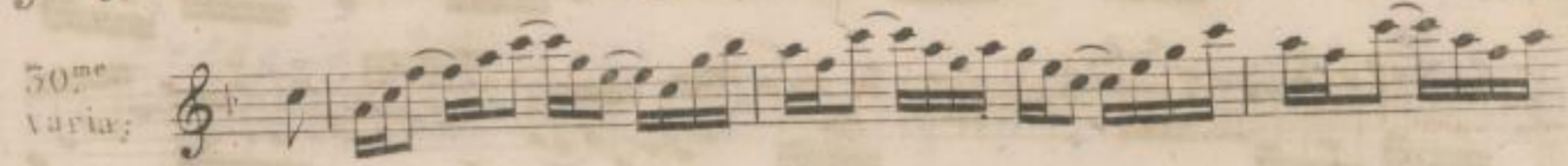
28.^{me}
Varia: 

29.^{me}
Varia: 

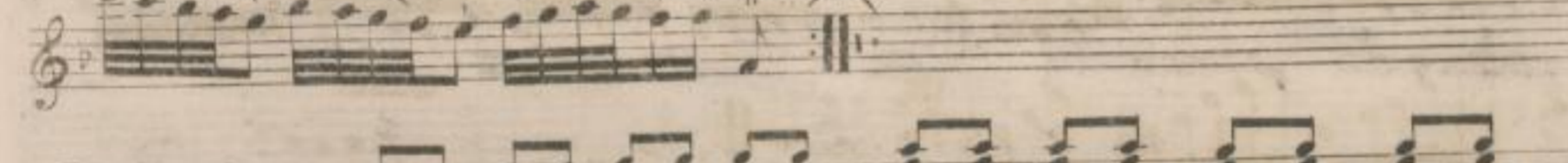
VIOLON



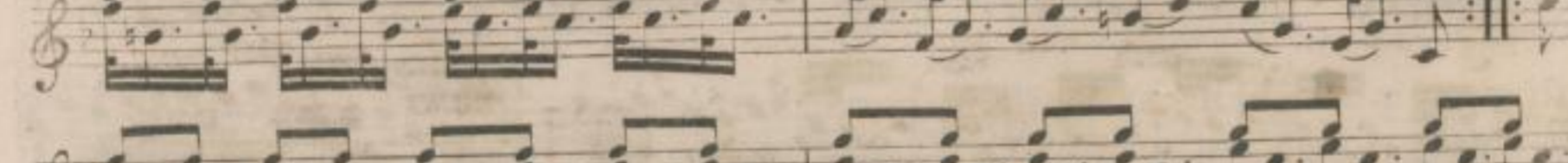
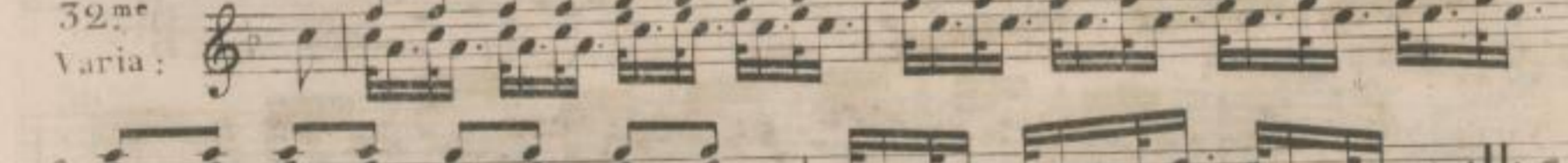
50^{me}
Varia:



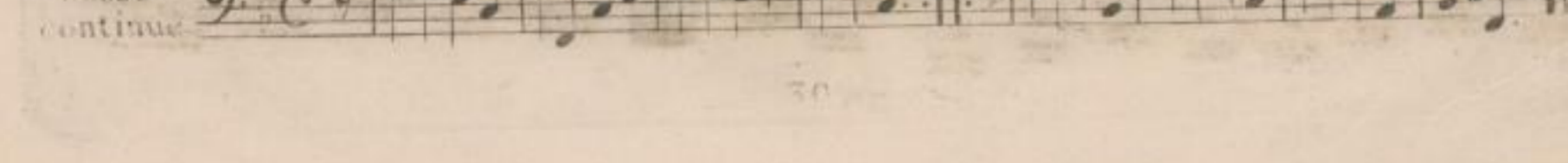
31^{me}
Varia:



32^{me}
Varia:



Basse
continue



33.^{me}
Varia :

The 33rd variation consists of three staves of music. The first staff begins with a treble clef, a key signature of one flat (B-flat), and a common time signature. It features a series of trills (tr) over a sixteenth-note rhythmic pattern. The second and third staves continue this pattern, with the third staff ending with a double bar line and repeat dots.

34.^{me}
Varia :

The 34th variation consists of four staves of music. The first staff begins with a treble clef, a key signature of one flat, and a common time signature. It features a sixteenth-note pattern with the number '6' written above several notes, indicating sixths. The second and third staves continue this pattern, and the fourth staff ends with a double bar line and repeat dots.

35.^{me}
Varia :

The 35th variation consists of four staves of music. The first staff begins with a treble clef, a key signature of one flat, and a common time signature. It features a sixteenth-note pattern. The second and third staves continue this pattern, and the fourth staff ends with a double bar line and repeat dots.



36^{me}

Varia :



37^{me}

Varia :

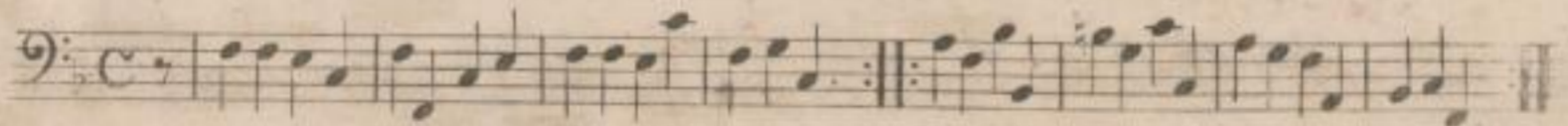


38^{me}

Varia :



Basse
continue



39.^{me}
Varia:



40.^{me}
Varia:

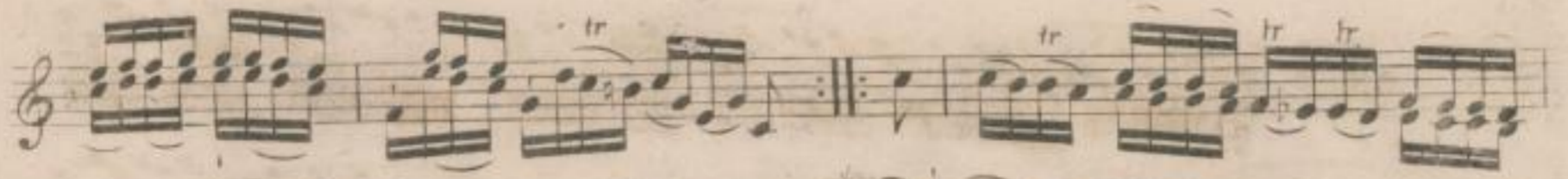


41.^{me}
Varia:

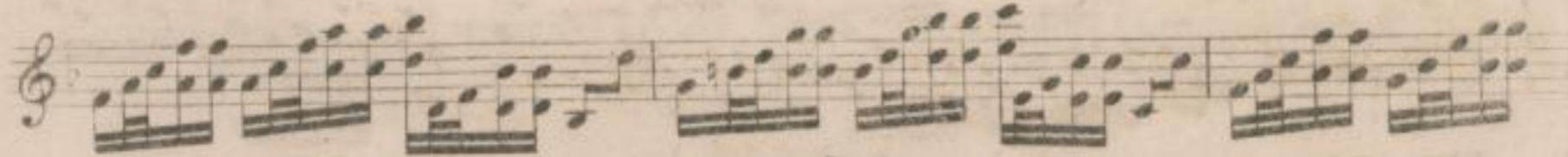
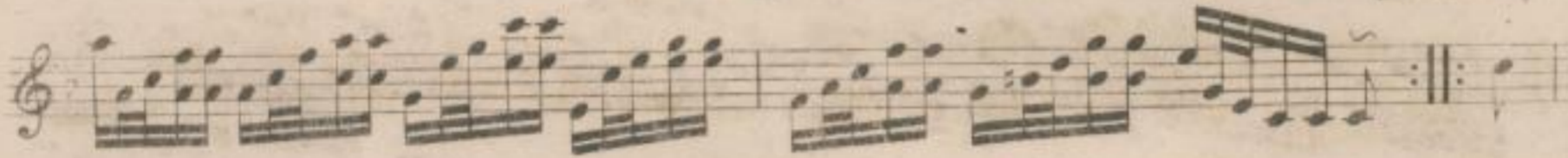


42.^{me}
Varia:

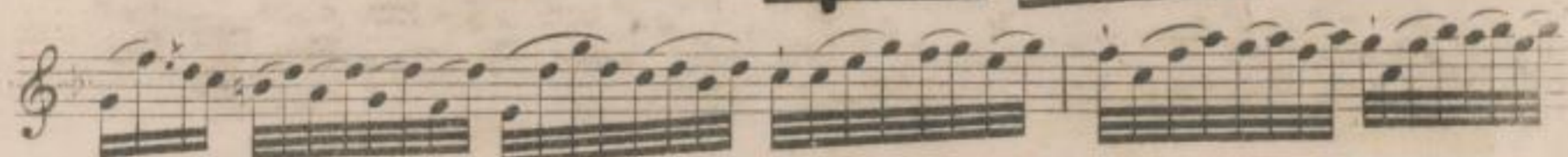
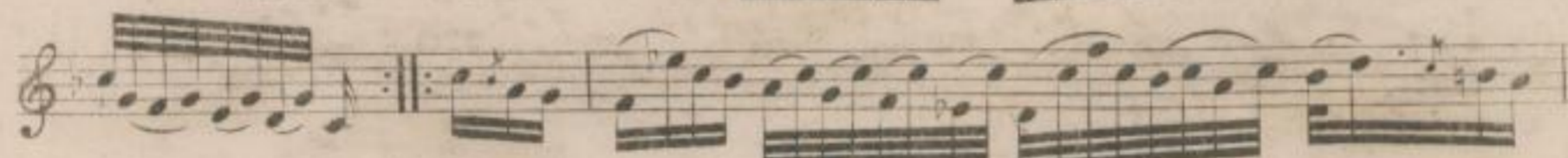
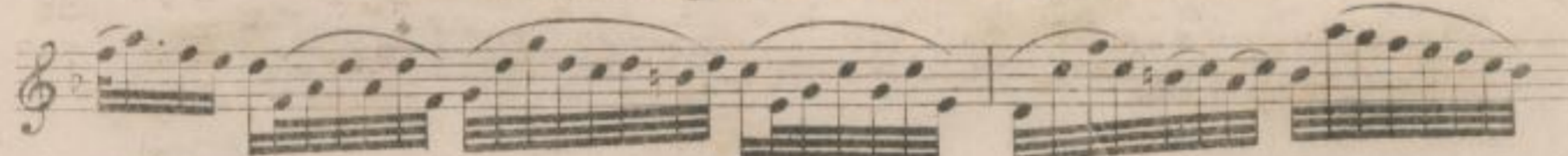
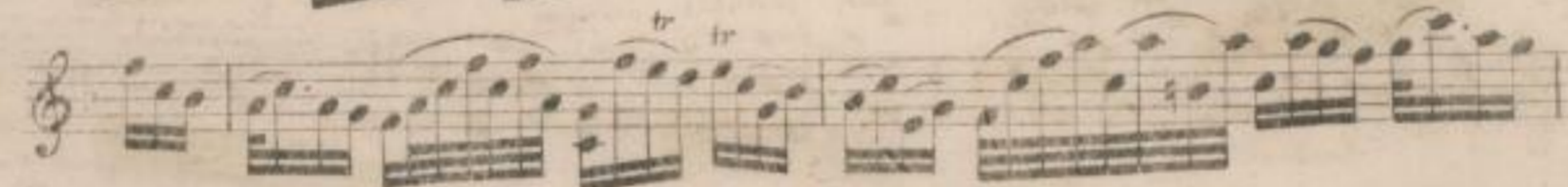




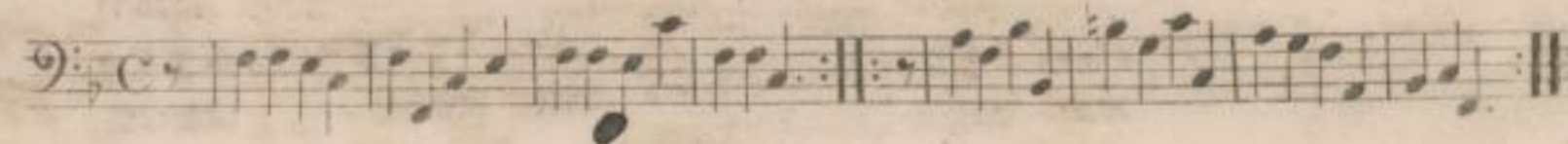
43^{me}
Varia:



44^{me}
Varia:



Basse
continue



45.^{me}
Varia:

Handwritten musical notation for measures 45 and 46. The score consists of five staves of music in treble clef with a key signature of one flat. The music is characterized by rapid sixteenth-note passages, often beamed in groups of four or six, and is heavily ornamented with slurs and grace notes. Measure 45 ends with a repeat sign, and measure 46 concludes with a double bar line.

46.^{me}
Varia:

Handwritten musical notation for measures 47 and 48. The score consists of five staves of music in treble clef with a key signature of one flat. The music continues with rapid sixteenth-note passages and slurs. Measure 47 features a repeat sign, and measure 48 ends with a double bar line.

47.^{me}
Varia:

Handwritten musical notation for measures 49 and 50. The score consists of two staves of music in treble clef with a key signature of one flat. The music features rapid sixteenth-note passages with trills, indicated by the 'tr' marking above several notes. Measure 49 has a repeat sign, and measure 50 ends with a double bar line.

48.^{me}
Varia:

Two systems of musical notation for measures 48 and 49. The first system contains measures 48 and 49, both featuring a complex, rhythmic pattern of eighth notes with trills. The second system contains measures 50 and 51, continuing the pattern with trills and some rests.

49.^{me}
Varia:

Two systems of musical notation for measures 50 through 54. The first system contains measures 50 and 51, showing a change in the rhythmic pattern to a more regular eighth-note flow. The second system contains measures 52 and 53. The third system contains measure 54, which concludes with a double bar line and a repeat sign.

50.^{me}
Varia:

Two systems of musical notation for measures 55 through 59. The first system contains measures 55 and 56, featuring a more melodic line with some trills. The second system contains measures 57 and 58. The third system contains measure 59, which ends with a double bar line and the word "Fine".

Basse
continue

A single system of musical notation for the Basse continue, written in bass clef with a common time signature. It provides a simple harmonic accompaniment for the violin parts.