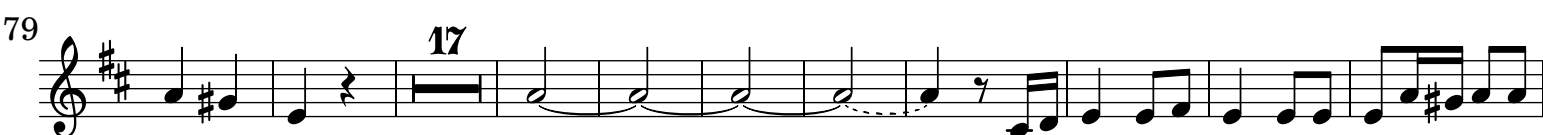
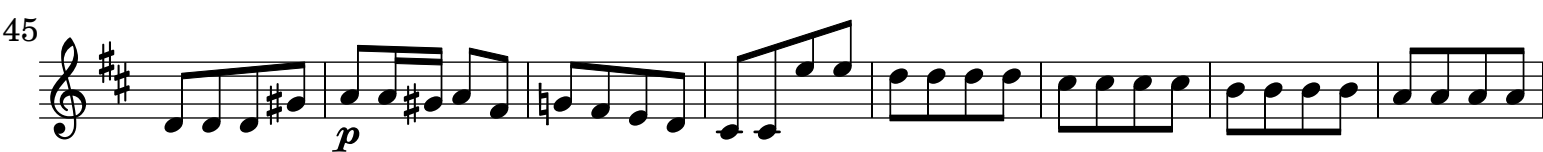


Concerto per Oboe e Fauto traversiere FaWV L:D11

Violino II

J. F. Fasch (1688-1758)

[1. Allegro]



114

122

130

139

161

169

177

187

196

[2.] Largo

5

Staccato

10

[3.] Allegro

Musical score for Violino II, [3.] Allegro. The score is written in treble clef, key signature of two sharps (F# and C#), and 3/8 time signature. The piece consists of 200 measures, divided into systems of five lines each. Measure numbers are indicated at the beginning of each line.

Key features of the score include:

- Measures 1-12: Initial rhythmic pattern with eighth and sixteenth notes.
- Measures 13-26: Continuation of the initial pattern.
- Measures 27-56: Introduction of a triplet (3) and a 15-measure rest.
- Measures 57-68: Complex rhythmic patterns with sixteenth and thirty-second notes.
- Measures 69-80: Continuation of the complex rhythmic patterns.
- Measures 81-111: Introduction of a 20-measure rest.
- Measures 112-133: Continuation of the complex rhythmic patterns.
- Measures 134-146: Continuation of the complex rhythmic patterns.
- Measures 147-165: Introduction of a 4-measure rest.
- Measures 166-183: Continuation of the complex rhythmic patterns.
- Measures 184-199: Continuation of the complex rhythmic patterns.
- Measure 200: Final measure of the piece.