

5a.77.C.19

VI.
TENOR
I OSQVIN



LIB. II

R/XVII/Petrucchi/20

Sa. 77. C. 19.

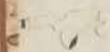
RISM

7 + 10 + 7 32.

2.2.1966.



1
I



LIBRI SECUNDI MISSARVM IOSQVIN.



etc



K **Tener.** **AVE MARIS STELLA.**
Kyrie Christe

K **Kyrie**
T in terra: Gñs propter Dñe deus

Iesu xpe Dñe deus agni: dei filius pñs Qui tollis

Qui tollis suscipe nostrā miserere nobis Tu solus dñs Cū scis

in gloria a men



AVE Tenor

Atem: Et in unum Et ex p̄re ante oīa Genitū

consubstantialē per quē Qui pp̄ descēdit

Et incarnatus ē ex maria Crucifixus

passus Et resurrexit secundū Et ascendit Et iteꝛe cūsus regni

Et in sp̄itū & unigenitū tē qui ex patre Qui cū patre & cū gl̄ificatur & loquit̄

catholicam Confiteor in remissionem Verte

etc ij

Tenor.

Ave

Et ex pecto Equitā seculi amen

Auctus

Pleni Tacet

Osanna

Benedictus Qui venit Tacet.

Osanna ut supra

Genus dei

Genus secundū Tacet.

Agnus dei

dona nobis

The image shows a page of a musical score for a Tenor voice. It consists of six staves of music. The first staff begins with the word 'Ave' and contains the lyrics 'Et ex pecto Equitā seculi amen'. The second staff starts with a large decorative initial 'A' and the word 'Auctus'. The third staff has the lyrics 'Pleni Tacet' and 'Osanna'. The fourth staff has 'Benedictus Qui venit Tacet.' and 'Osanna ut supra'. The fifth staff has 'Genus dei' and 'Genus secundū Tacet.'. The sixth staff has 'Agnus dei' and 'dona nobis'. The music is written in a historical style with various note values and rests.

HERCVLES DVX FERRARIE:

Tenor

Resoluto

Yrie

Chrite

Kyrie

in terra

Qui tollis

Agnus

Qui tollis

Et in spiritum

etc. 119

Tenor,

HERCVLES,

Anctus

Olanna

Benedictus

Qui uenit In nomine dñi

Olanna
et
supra

Gans

Agnus
secudu
Tacet.

Agnus, certu

donanobis pacem

MAL HEVR ME BAT,

Tenor

K Yrie Icy fon Chriſte Icy fon Kyrie

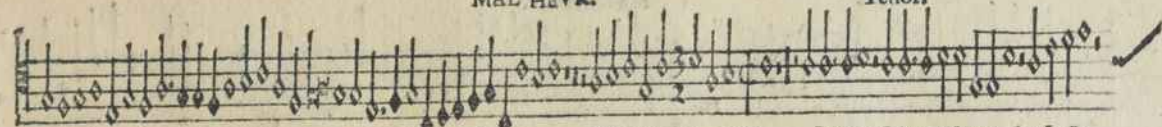
L Audam^o te Brūdicim^o te G'orificamus te G'fas agimus tibi pp magnā gloriā tuā Dñe deus deus rex celestis pī omnipotens Dñe fili unigenite

Pctā mūdi miserere nob deprecationē nostrā Qui sedes ad dexterā pīs miserere nobis Quā tu solus scūs Tu solus dñs Tu solus altissimus Iesu xpe *etc etc*

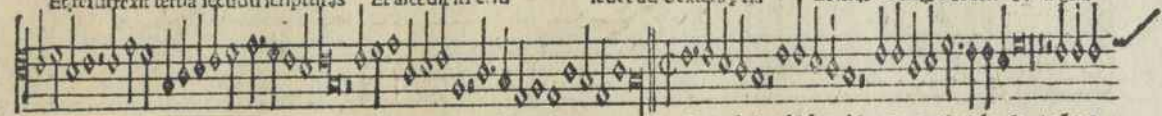
Tenor.

MAL. MEVR.

D Cū sctō spiritu in gloria dei patris amen
 Atriem omnipotēte factorē celi & ter re Et in unū dñm Iesū
 xpm filium dei unigenitum Et ex patre natū añ oia sctā Deū de deo lūm d' lūe deū ueg
 de deo uero Gēitū nō factū cōsubstantialē patri p quē oia sctā sunt Qui pp nos hoies
 & pp nrām salutē descēdit de celis descēdit de celis Et in carnatus est de spū sctō
 ex maria uirgine & hō factus est Crucifixus ē p nob sub ponto pilato passus & sepultus ē



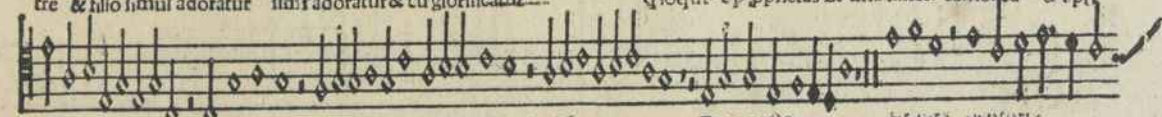
Et exiit tertia secundum scripturas Et ascendit in celum sedet ad dexteram patris Et iterum venturum est cum signa



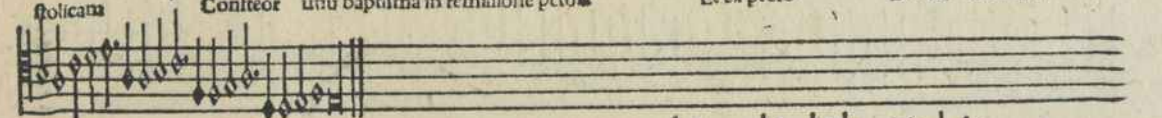
iudicare vivos: mortuos cuius regni non erit finis Et in spiritum sanctum dominum et vivificantem Qui cum pa



tre et filio simul adoratur simul adoratur et cum glorificatur qui loquitur per prophetas Et unum sanctum catholicum et apo



stolicum Confiteor unum baptismum in remissionem peccatorum Et ex peccato et unam sanctam ecclesiam



in saecula amen



Anchus

Sanctus

Tenor MAL HEVR.

dn̄s deus

fabaoth

Osanna

Duo.

in excel sis Benedic̄tus

Pleni
Tacet

The image shows a page of handwritten musical notation on aged paper. It consists of six staves of music. The first staff is labeled 'Tenor' and 'MAL HEVR.' and contains a melodic line with many notes. The second staff has the lyrics 'dn̄s' and 'deus' and ends with 'Pleni Tacet'. The third staff has the lyrics 'fabaoth'. The fourth staff is labeled 'Osanna'. The fifth staff is labeled 'Duo.'. The sixth staff has the lyrics 'in excel sis' and 'Benedic̄tus'. The notation is dense and characteristic of 18th or 19th-century manuscript notation.

MAL HEVR.

Tenor

Qui venit
Tacet.

Ofama
Vltupr



In nomine
Canon De minimis non curat prelor.

Gnus dei

Duo

Agnus dei

q tollis

pctis

Vttr

Tenor:

MAL HEVR.

mundi miserere nobis Agnus dei

This system contains the first three staves of musical notation. The top staff is the tenor line with lyrics 'mundi miserere nobis Agnus dei'. The second and third staves are accompaniment. The music is in a common time signature (C) and features a melodic line with many sixteenth notes.

dona nobis pacem

IOSQVIN. LA MI BAVDICHON.



Kyrie Christe

This system contains the fourth and fifth staves of musical notation. The top staff continues the tenor line with lyrics 'Kyrie Christe'. The bottom staff is accompaniment. The music continues with a similar melodic style.

Kyrie

LAMI BAVDICHON.

Tenor

Resolutio.
 T in terra: *Q*ui tollis *Tacet* *Q*ui sedes

*C*ū scō

Atrēm: Et ex patre natū *D*uo *E*t in carnatus est

ex maria & hō *C*rucifixus *Tacet* **Resolutio.** Et resurrexit

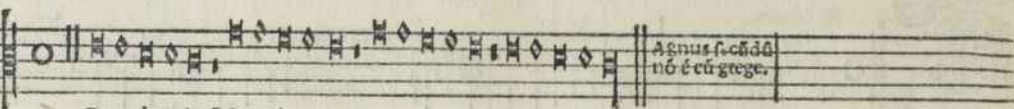
Resolutio. *A*nctus *D*igni *Tacet* *O*fanda; *B*enedictus *Tacet* *O*fanna *v*i supra

Detailed description: This is a page of a musical score for a Tenor voice part. The title is 'LAMI BAVDICHON.' and the instrument is 'Tenor'. The score is written on five staves. The first staff begins with a large, ornate initial 'T' and contains the text 'T in terra: Qui tollis Tacet Qui sedes'. The second staff starts with a large 'C' and contains 'Cū scō'. The third staff begins with a large 'A' and contains 'Atrēm: Et ex patre natū Duo Et in carnatus est'. The fourth staff starts with a large 'E' and contains 'ex maria & hō Crucifixus Tacet Resolutio. Et resurrexit'. The fifth staff begins with a large 'A' and contains 'Anctus Digni Tacet Ofanda; Benedictus Tacet Ofanna vi supra'. The music is written in a historical style with various note values, rests, and decorative flourishes.

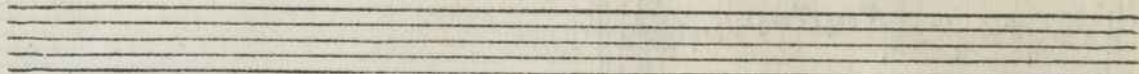


Tenor

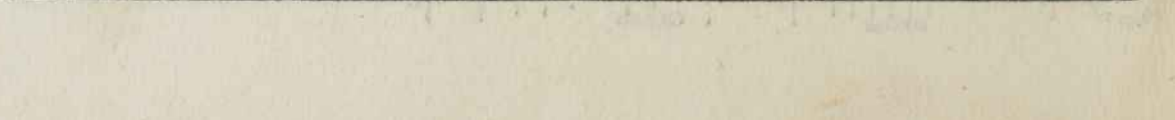
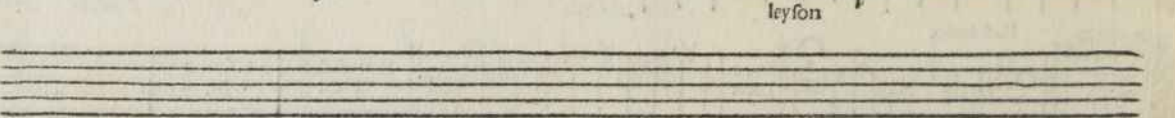
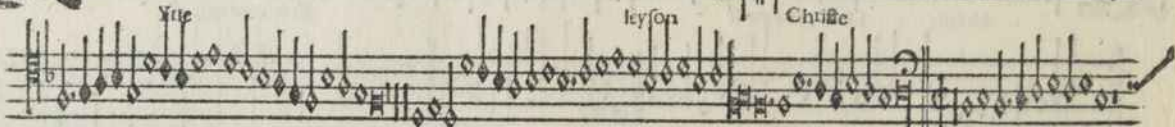
IAMI BAVDICHON



Gnus dei primū & tertium



IOSQ VIN. VNA MVSQ VE DE BVSCHAIA.



VNA MVSQVE.

Tenor

Resolutio.

In terra: Gf̄s agimus Dñe deus agnus dei

Qui tollis Qui tollis suscipe Misere

Quia tu solus dñs Tu solus Iesu

xpe Cū sc̄to In gloria amen

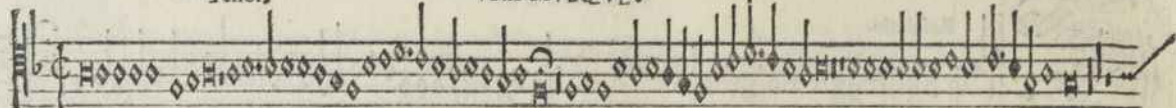
Et ex patre

Et resurrexit

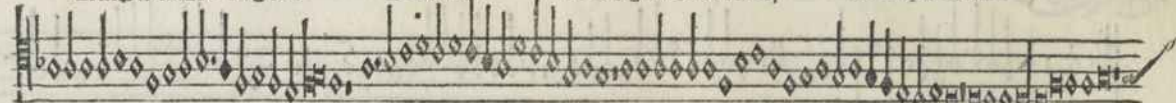
Verte

Tenor,

VNA MVSQVE.



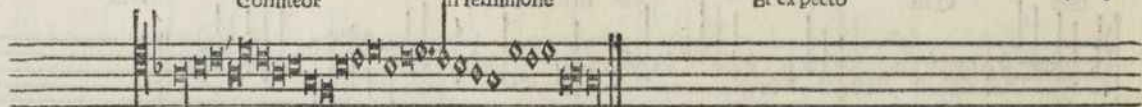
Et itez uerturus e cu gloria & mortuus eius regni non erit finis, & in spum scdm



qui ex patre Qui cu pre & filio & cu glorifcatur Et una scdm



Confiteor in remiffione Et ex pecto



Et in a uenturi am e



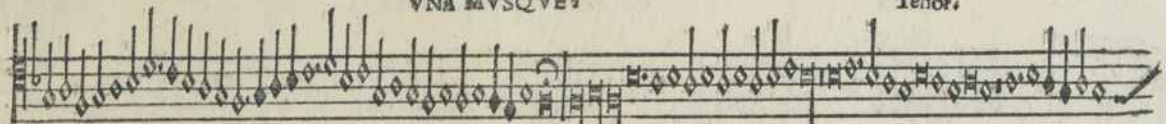
Anctus Sanctus dñs deus



Pleni sunt celi

VNA MVSQVE.

Tenor.

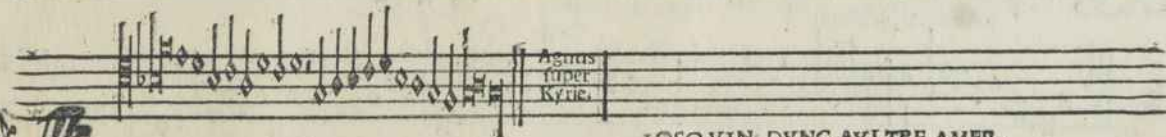


Gloria



Benedictus

qui uenit



Agnus
super
Kyrie.

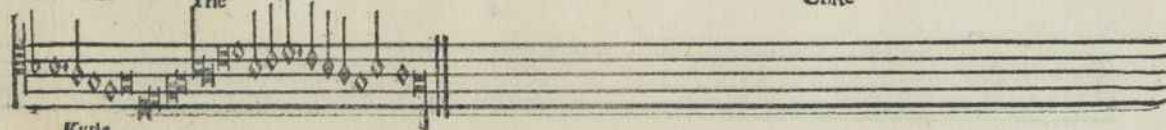


IOSQVIN. DVNG AVLTRE AMER.



Kyrie

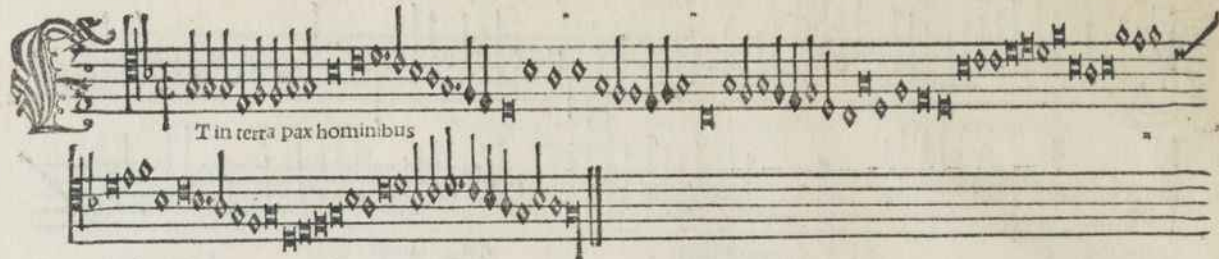
Criste



Kyrie

Terrora

DVNG AVLTRE AMER 21



T in terra pax hominibus

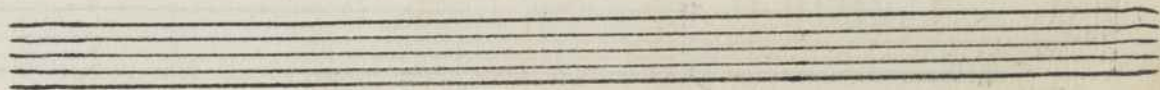
This system contains the first two staves of music. The first staff begins with a large, ornate initial 'T' in a decorative font. The music is written in a treble clef with a common time signature (C). The notes are diamond-shaped and connected by a continuous line. The second staff continues the melody and ends with a double bar line.



Atrem omnipotentem

Et resurrexit

This system contains the next two staves of music. The first staff begins with a large, ornate initial 'A' in a decorative font. The music continues in the same treble clef and common time. The second staff continues the melody and ends with a double bar line.



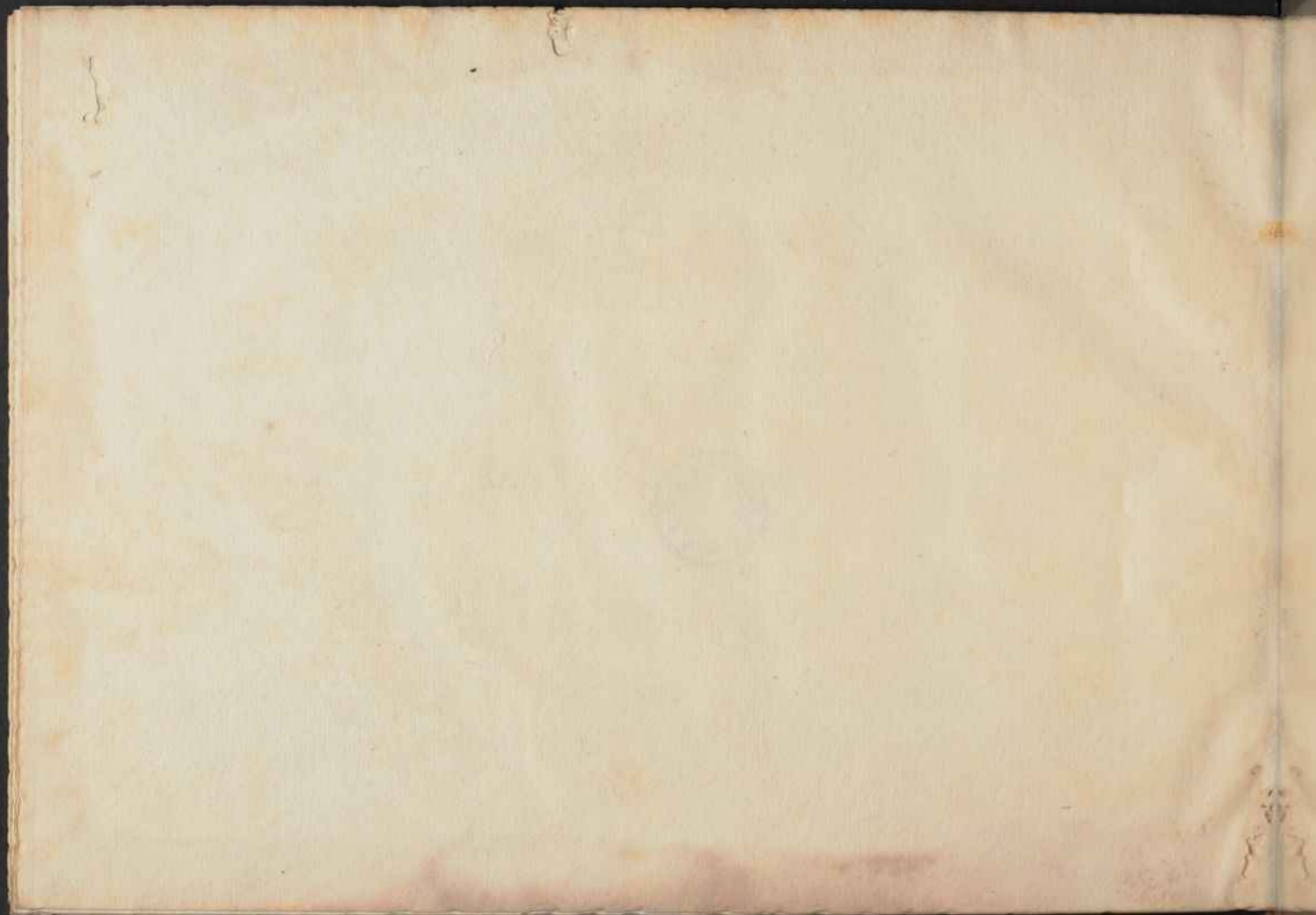
DVNG AVLTRE AMER.

Tenor

Anctus
 Tu solus q facis mirabilia Tu solus creator q creasti nos Tu solus redēptor q redēsti nos
 sanguine tuo preciosissimo Ad te soli cōfugimus Nec aliū adoramus Iesu xpe Ad te preces effūdimus
 exaudi q supplicamus & pcede q pectimus rex benigne
 Agnus dei
 Agnus dei







ÖNB



+Z138215404



AVE

Tence

0 1 2 3 4 5 6 7 8 9 10 11 12 13 14 15 16 17 18 19

1 2 3 4 5 6 7 8 9 10 11 12 13 14 15 16 17 18 19 20

IMAGO
PHOTOGRAPHIC

COLOUR AND MONOCHROME SEPARATION GUIDE

BLUE CYAN GREEN YELLOW RED MAGENTA WHITE 3/COLOUR BLACK



passus Et resurrexit secundū Et ascendit Et iteg cuius regni

Et in spiritū & in sanctam te qui ex patre Qui cū patre & cū glificatur & loquitur

catholicam Confiteor in remissionem Verte

etc if

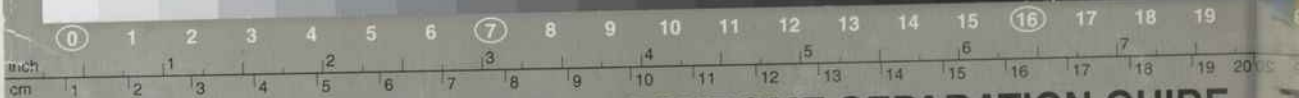
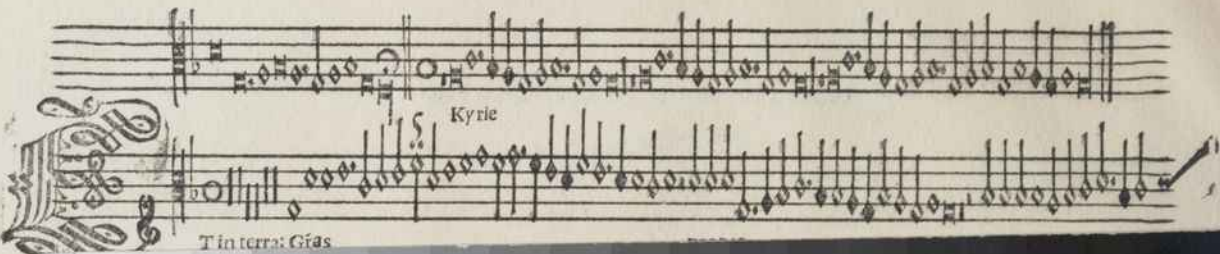


Tenor.

AVE MARIS STELLA.

Kyrie

Christe



IMAGO
PHOTOGRAPHIC

COLOUR AND MONOCHROME SEPARATION GUIDE

