

Präludium

Constantin Stepan
Dec. 1982

$\text{♩} = 80$
Adagio

pp crescendo
trump
ff

pp crescendo
trump
ff

p crescendo
trump
ff

mf crescendo, allagando
trump
ff

Handwritten musical score system 1. The system consists of two staves. The upper staff is in treble clef with a key signature of two flats (B-flat and E-flat). The lower staff is in bass clef with the same key signature. The tempo and dynamics are marked as *f* *a tempo, grave*. The music features chords and some melodic lines with accents. The system concludes with the instruction *un poco decrescendo* and a dynamic marking of *mf*.

Handwritten musical score system 2. The system consists of two staves. The upper staff is in treble clef with a key signature of two flats. The lower staff is in bass clef with the same key signature. The dynamics are marked as *mf*. The tempo and performance instructions include *un poco crescendo* and *un poco allargando*.

Handwritten musical score system 3. The system consists of two staves. The upper staff is in treble clef with a key signature of two flats. The lower staff is in bass clef with the same key signature. The tempo is marked as *a tempo*. The system includes a melodic line with a slur and a dynamic marking of *mf (rubato)*.

Handwritten musical score system 4. The system consists of two staves. The upper staff is in treble clef with a key signature of two flats. The lower staff is in bass clef with the same key signature. The system includes a melodic line with a slur and a dynamic marking of *mf*.

Handwritten musical score system 5. The system consists of two staves. The upper staff is in treble clef with a key signature of two flats. The lower staff is in bass clef with the same key signature. The system includes a melodic line with a slur and a dynamic marking of *mf*.

Handwritten musical score for piano, consisting of five systems of staves. The key signature is two flats (B-flat and E-flat). The score includes various musical notations, including chords, scales, and dynamics.

System 1: Treble clef staff starts with a key signature change from two flats to one flat and sharp (B-flat and F-sharp). The bass clef staff features a complex chordal texture. Dynamics include *f* (forte) and *mf* (mezzo-forte).

System 2: Treble clef staff has a key signature change back to two flats. The bass clef staff continues the chordal texture. Dynamics include *f* and *mf*.

System 3: Treble clef staff has a key signature change to one flat and sharp. The bass clef staff features a complex chordal texture. Dynamics include *f* and *mf*.

System 4: Treble clef staff has a key signature change back to two flats. The bass clef staff continues the chordal texture. Dynamics include *f* and *mf*.

System 5: Treble clef staff has a key signature change to one flat and sharp. The bass clef staff features a complex chordal texture. Dynamics include *f* and *mf*.

8

Handwritten musical score system 1. The system consists of two staves. The upper staff is in treble clef with a key signature of two flats (B-flat and E-flat). It begins with a whole note chord, followed by a series of eighth notes, and ends with a half note. The lower staff is in bass clef with the same key signature. It begins with a whole note chord, followed by a series of eighth notes, and ends with a half note. A large slur connects the end of the upper staff to the beginning of the lower staff. The system is marked with a 'p' (piano) dynamic.

8

Handwritten musical score system 2. The system consists of two staves. The upper staff is in treble clef with a key signature of two flats. It begins with a whole note chord, followed by a series of eighth notes, and ends with a half note. The lower staff is in bass clef with the same key signature. It begins with a whole note chord, followed by a series of eighth notes, and ends with a half note. A large slur connects the end of the upper staff to the beginning of the lower staff. The system is marked with a 'p' (piano) dynamic.

8

Handwritten musical score system 3. The system consists of two staves. The upper staff is in treble clef with a key signature of two flats. It begins with a whole note chord, followed by a series of eighth notes, and ends with a half note. The lower staff is in bass clef with the same key signature. It begins with a whole note chord, followed by a series of eighth notes, and ends with a half note. A large slur connects the end of the upper staff to the beginning of the lower staff. The system is marked with a 'p' (piano) dynamic.

Handwritten musical score system 4. The system consists of two staves. The upper staff is in treble clef with a key signature of two flats. It begins with a whole note chord, followed by a series of eighth notes, and ends with a half note. The lower staff is in bass clef with the same key signature. It begins with a whole note chord, followed by a series of eighth notes, and ends with a half note. A large slur connects the end of the upper staff to the beginning of the lower staff. The system is marked with a 'p' (piano) dynamic.

Handwritten musical score system 5. The system consists of two staves. The upper staff is in treble clef with a key signature of two sharps (F-sharp and C-sharp). It begins with a whole note chord, followed by a series of eighth notes, and ends with a half note. The lower staff is in bass clef with the same key signature. It begins with a whole note chord, followed by a series of eighth notes, and ends with a half note. A large slur connects the end of the upper staff to the beginning of the lower staff. The system is marked with a 'p' (piano) dynamic.



Handwritten musical score for piano, page 6. The score is written on five systems of staves, each with a treble and bass clef. The key signature is D major (two sharps). The time signature is 4/4. The score includes various musical notations such as notes, rests, accidentals, and dynamic markings. The first system features a melodic line in the treble and a bass line with a large slur. The second system includes a melodic line in the treble and a bass line with a large slur. The third system includes a melodic line in the treble and a bass line with a large slur. The fourth system includes a melodic line in the treble and a bass line with a large slur. The fifth system includes a melodic line in the treble and a bass line with a large slur. The score is marked with '8' at the beginning of the first, second, and third systems. The dynamic marking 'pp' (pianissimo) is present in the second system. The dynamic marking 'mp' (mezzo-piano) is present in the third system. The score is written in a clear, legible hand.

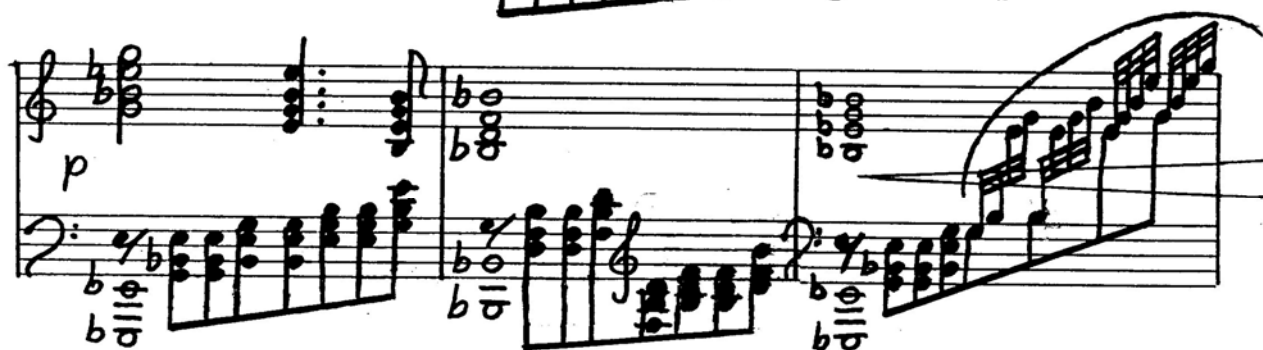
8

8

8

pp

mp



Handwritten musical score for piano, consisting of five systems of staves. The notation includes various musical symbols such as notes, rests, and dynamic markings.

System 1: The first system features a treble clef with a key signature of two flats and a common time signature. It includes a melodic line with a fermata and a bass line with a series of chords. A dynamic marking of *ff* is present.

System 2: The second system continues the melodic and harmonic development. It includes a treble clef with a key signature of two flats and a common time signature. A dynamic marking of *f* is present.

System 3: The third system features a treble clef with a key signature of two flats and a common time signature. It includes a melodic line with a fermata and a bass line with a series of chords. A dynamic marking of *f* is present.

System 4: The fourth system features a treble clef with a key signature of two flats and a common time signature. It includes a melodic line with a fermata and a bass line with a series of chords. A dynamic marking of *f* is present.

System 5: The fifth system features a treble clef with a key signature of two flats and a common time signature. It includes a melodic line with a fermata and a bass line with a series of chords. A dynamic marking of *fff* is present.

Other markings include *accelerando, cresc.* and *rit.*