

Nisi Dominus a 3 = Voci con Strad

Basso Ripieno

Andante $\text{E}=\flat$ F III 10 Nisi Dominus e = dificarit

Domus in vanus in vanus la = borra = verunt la bo = ra =

verunt qui e = dificant e = = am Nisi Dominus

4 frustra vigilat qui custodit qui cus = todit

e = am " Surgite Surgite Surgite post =

qua' se = deritis post = qua' se = deritis qui mandu =

ca = = = = = = = tis pa = nem do = lo =

ris do = lo = ris 16

Largo $\text{E}=\flat$ 12 4 7 Sicut Sa = gitte in

manu po = tentis ita filij excus = sorus ita filij excus =

Allegro 18 =
 12
 so-rum-

Andantino 3/4
 9
 Non non confun= detur non non confun=

4
 detur ini= micis suis in por=

Molto 12 =
 ta.

Largo
 Gloria patri Gloria filio

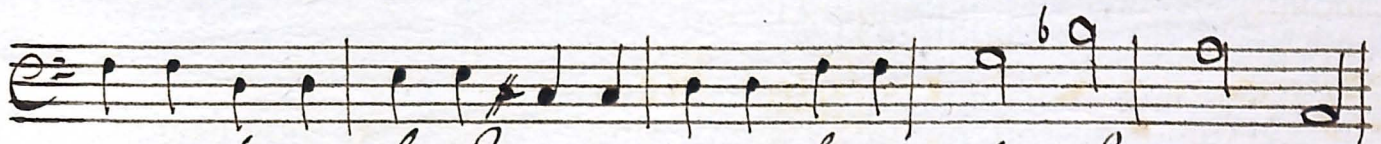
et Spi= ri= tus San= cto et Spi= ri= tus San=

Molto 12 =
 cto

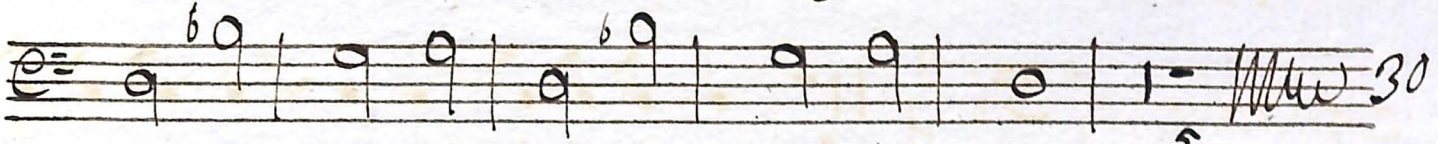
Allegro
 Sicut erat in prin= cipio

3
 et semper et in secula in secula secu=

lorum amen amen amen amen secu= lorum amen



amen *Secu*: loru' amen amen *Secu*: = lo = ru' a =



men a = = = men a = men a = men. 5

Auf Deo

