

Salve. a 3. voci, con stru!

Violino secondo.

*All. non tanto*

*p* *f*

*f*

*p* *f*

*f*

*32.*

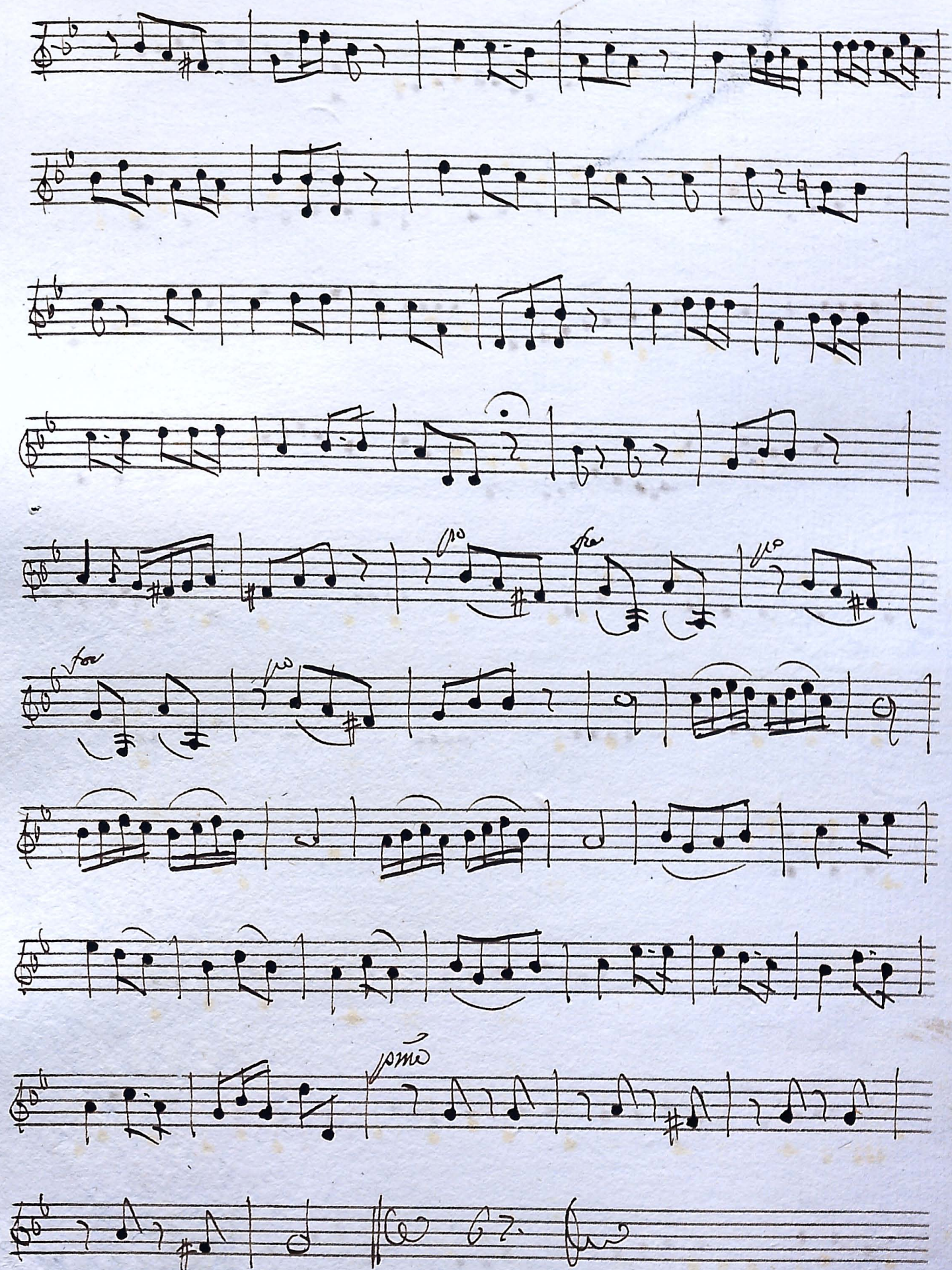
*Andantino*

*2. viol. Dulcedo*

*f*

Voller







*pno*  
Eia ergo.

*for* *pno* *for* *Volte*



Largo. *Ad demenz.*

Handwritten musical score for a piece titled "Largo. Ad demenz." The score is written on ten staves. The first staff begins with a treble clef, a key signature of two flats (B-flat and E-flat), and a 3/4 time signature. The music is written in a cursive, handwritten style. The first staff contains a melodic line with a half note, a quarter note, and a half note. The second staff continues the melody with a half note, a quarter note, and a half note. The third staff features a half note, a quarter note, and a half note. The fourth staff has a half note, a quarter note, and a half note. The fifth staff contains a half note, a quarter note, and a half note. The sixth staff has a half note, a quarter note, and a half note. The seventh staff features a half note, a quarter note, and a half note. The eighth staff has a half note, a quarter note, and a half note. The ninth staff contains a half note, a quarter note, and a half note. The tenth staff has a half note, a quarter note, and a half note. The score concludes with a double bar line and the word "Fine" written in a cursive hand.

*Sanctus*