

# Jubilate

HRV 401 / Ro 63

Obae 1

Johan Helmich Roman

Edition AddeLudde

1.

Oboe 1 **Vivace**

mf

p f

mf

p mf p

60 *f* *tr* 65 *tr*

70 75 *tr* 80

85 *mf* *tr* *p* *p*

90 95 100 *mf*

105 *tr* *tr* 110

115 *f* *tr* 120

# 3.

## Alla Breve

Oboe 1

5tr 3

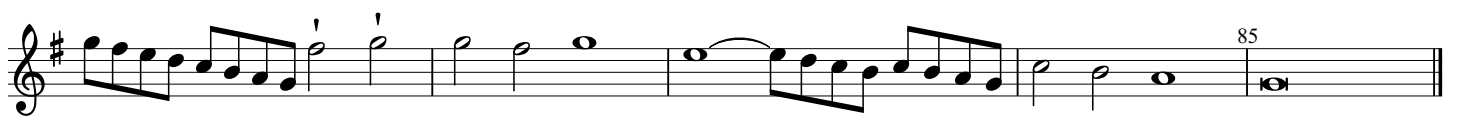
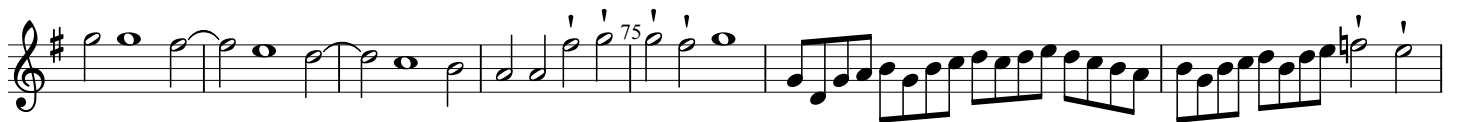
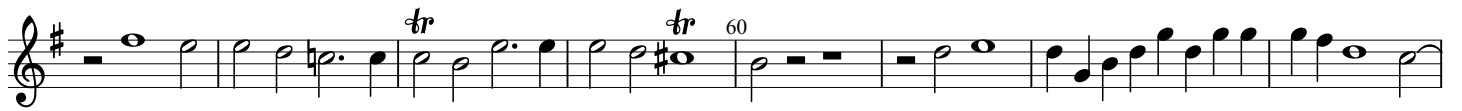
10 15

20 25 tr

tr 30 tr tr

35 tr 40

45 tr



4.

Oboe 1

Adagio

The musical score for Oboe 1 is written in treble clef with a common time signature (C). The tempo is marked 'Adagio'. The piece begins with a piano (*pp*) dynamic. The first staff contains measures 1 through 5, featuring a melodic line with a trill (*tr*) in measure 3 and a fingering of 5 in measure 5. The second staff contains measures 6 through 10, with a fingering of 10 in measure 8. The third staff contains measures 11 through 20, with a fingering of 15 in measure 12 and a fingering of 20 in measure 18. The score concludes with a double bar line.

# 5.

## Grave

Oboe 1

Musical notation for Oboe 1 in Grave tempo. The staff is in treble clef with a key signature of two sharps (F# and C#) and a common time signature (C). The melody consists of quarter notes and half notes, with some notes marked with fermatas. A fingering number '5' is placed above the eighth measure.

## Andante

Musical notation for Andante tempo. The staff is in treble clef with a key signature of two sharps (F# and C#) and a 7/8 time signature. The melody is more rhythmic, featuring eighth and sixteenth notes. A measure number '10' is placed above the fourth measure.

Musical notation for Andante tempo. The staff is in treble clef with a key signature of two sharps (F# and C#). The melody continues with quarter and half notes. A measure number '15' is placed above the second measure, and a trill ornament is indicated above the first note of that measure.