

3 Sinfonie da "Il Barcheggio"

Basso e Trombone

A. Stradella (1639 - 1682)

[I] Sinfonia avanti il Barcheggio

[I.1] Spiritosa, e staccata

Musical score for Bass and Trombone, first movement of the first symphony. The score is written in bass clef with a key signature of two sharps (F# and C#) and a common time signature (C). The music is in a 3/4 time signature. The score consists of nine staves of music, with measure numbers 5, 8, 11, 14, 18, 21, and 24 indicated at the beginning of each staff. The music features a variety of rhythmic patterns, including eighth and sixteenth notes, and rests. There are several accidentals, including sharps and flats, and some fingerings are indicated by numbers 5, 6, 7, and 8. The piece concludes with a fermata on the final note.

segue la Tripla [ms TO]

[I.2 Tripla]

Musical score for Bass and Trombone, second movement of the first symphony. The score is written in bass clef with a key signature of two sharps (F# and C#) and a 3/2 time signature. The music is in a 3/2 time signature. The score consists of three staves of music, with measure numbers 6 and 11 indicated at the beginning of each staff. The music features a variety of rhythmic patterns, including eighth and sixteenth notes, and rests. There are several accidentals, including sharps and flats, and some fingerings are indicated by numbers 6 and 11. The piece concludes with a fermata on the final note.

16 # 7 6 6 5 8 9 # 8 # 5 8

20 4 7 6 #

25

30

[I.3 Canzone]

5

9

13

18

23

26

30

34

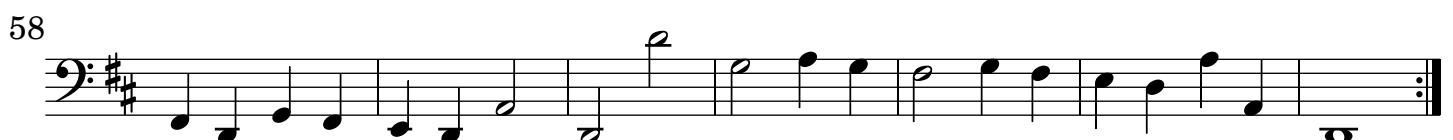
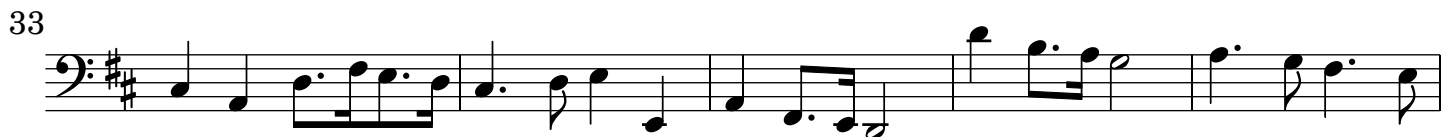
37

[I.4 Allegro]

Musical score for Bass and Trombone, I.4 Allegro, measures 1-65. The score is written in bass clef with a key signature of two sharps (F# and C#) and a 3/8 time signature. The music consists of a single melodic line with various rhythmic patterns, including eighth and sixteenth notes, rests, and slurs. The score is divided into measures, with measure numbers 7, 15, 20, 25, 31, 36, 41, 46, 51, 56, 61, and 65 indicated at the beginning of their respective staves. The final measure (65) ends with a double bar line.

[II] Seconda parte Sinfonia avanti

[II.1 Allegro, e staccato]



[II.4] Canzone

2

7

12

17

22

26

[II.5 Allegro]

7

13

20

27

[III] Sinfonia con V.V. all'Unisono, e Cornetto, e Trombone

[III.1] Adagio, forte, e staccato

