

Wolfgang Amadeus Mozart

Sonate Nummer 1 für Piano und Violine in D-Dur

KV 7

Allegro molto



37

45

50

55

62

65

70

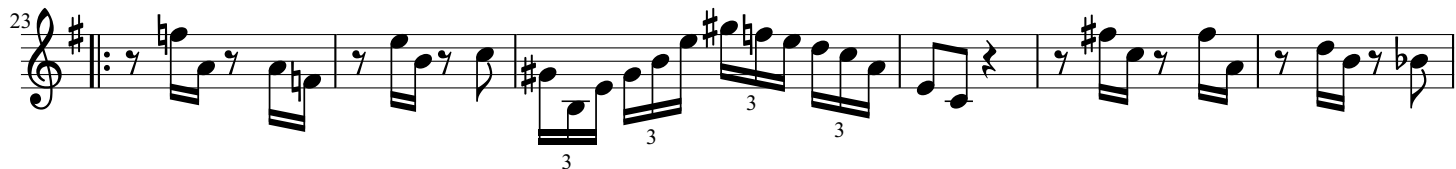
75

Wolfgang Amadeus Mozart

Sonate Nummer 2 für Piano und Violine in D-Dur

KV 7

Adagio



Wolfgang Amadeus Mozart

Sonate Nummer 2 für Piano und Violine in D-Dur

KV 7

Menuet 1.)

The image shows the musical score for the first minuet of Mozart's Sonata No. 2 for Piano and Violin in D major, KV 7. The score is written in 3/4 time and consists of two staves. The first staff is the treble clef, and the second staff is the bass clef. The key signature is one sharp (F#), and the time signature is 3/4. The music is in a simple, elegant style characteristic of Mozart's early works. The first staff begins with a treble clef, a key signature of one sharp, and a 3/4 time signature. The melody starts with a quarter rest, followed by a quarter note G4, an eighth note A4, and a quarter note B4. The second staff begins with a treble clef, a key signature of one sharp, and a 3/4 time signature. The bass line starts with a quarter note G3, followed by a quarter note A3, and a quarter note B3. The piece concludes with a double bar line and repeat dots.

Wolfgang Amadeus Mozart

Sonate Nummer 2 für Piano und Violine in D-Dur

KV 7

Menuet 2.)

7

13