

# Quatuor Op.1 n°1

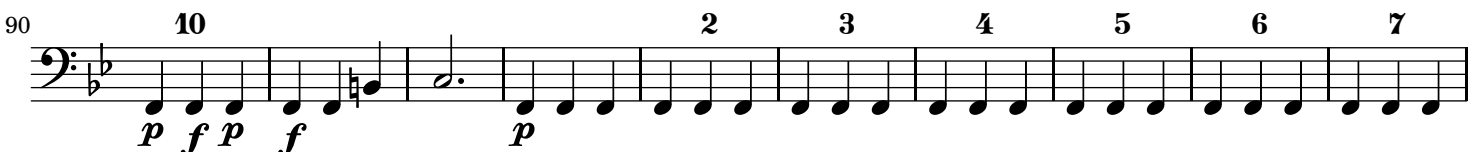
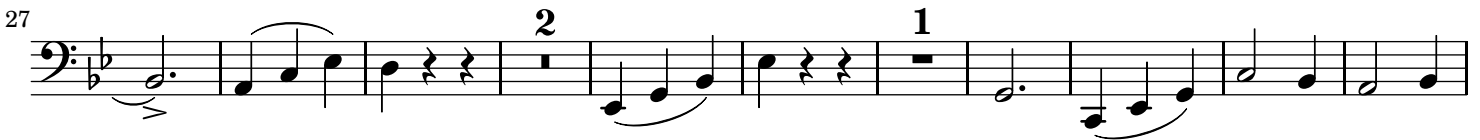
Violoncelle

Hyacinthe JADIN  
(1776-1800)

Largo



Allegro non troppo



110 **1**  
Musical staff with bass clef, key signature of two flats, and a first fingering '1' above the first measure. The staff contains a sequence of notes and rests, ending with a dynamic marking *f*.

120  
Musical staff with bass clef and key signature of two flats, containing a sequence of notes and rests.

131 **1**  
Musical staff with bass clef and key signature of two flats, starting with a first fingering '1' above the first measure. The staff contains notes and rests, with a dynamic marking *p*.

142 **1**  
Musical staff with bass clef and key signature of two flats, starting with a first fingering '1' above the first measure. The staff contains notes and rests.

153 **1**  
Musical staff with bass clef and key signature of two flats, starting with a first fingering '1' above the first measure. The staff contains notes and rests.

165  
Musical staff with bass clef and key signature of two flats, containing notes and rests with various articulations.

176 *f*  
Musical staff with bass clef and key signature of two flats, starting with a dynamic marking *f*. The staff contains notes and rests, ending with a dynamic marking *p*.

186  
Musical staff with bass clef and key signature of two flats, containing notes and rests with various articulations.

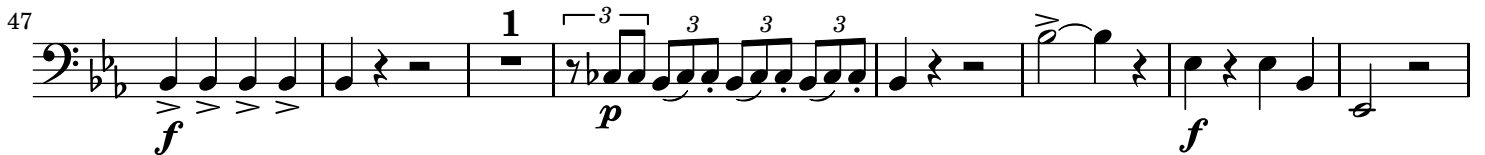
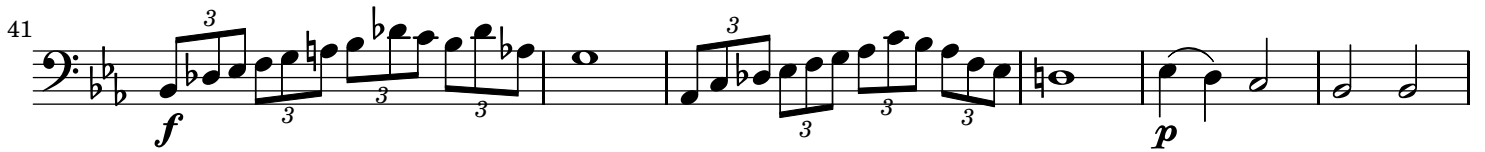
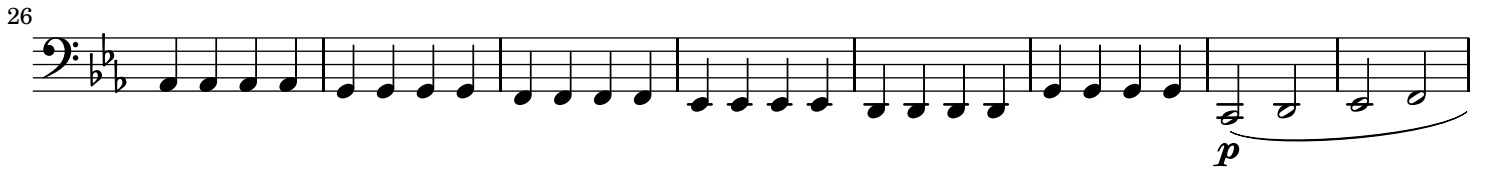
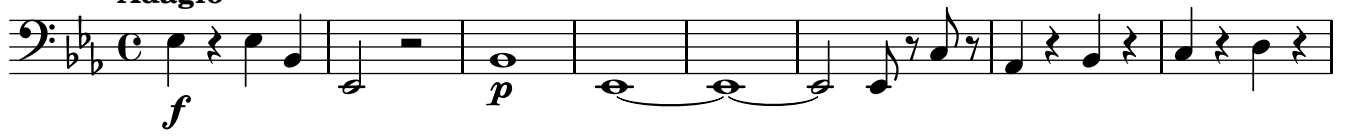
197 *f* *p*  
Musical staff with bass clef and key signature of two flats, containing notes and rests with dynamic markings *f* and *p*. Fingering numbers 2, 3, 4, and 5 are placed above the notes.

206 *f p f p f p*  
Musical staff with bass clef and key signature of two flats, containing notes and rests with dynamic markings *f* and *p*. Fingering numbers 6, 7, 8, 9, 10, 2, and 3 are placed above the notes.

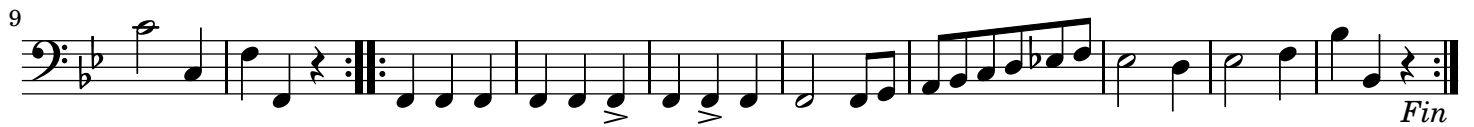
216 *f p f p f p*  
Musical staff with bass clef and key signature of two flats, containing notes and rests with dynamic markings *f* and *p*. Fingering numbers 4, 5, 6, 7, 8, 9, and 10 are placed above the notes.

226 *f p f p f p*  
Musical staff with bass clef and key signature of two flats, containing notes and rests with dynamic markings *f* and *p*. Fingering numbers 2, 3, 4, 5, 6, 7, 8, 9, and 10 are placed above the notes.

## Adagio



## Menuet



28

*D.C. au Menuet*

**Allegro 2**

*p*

13

25

38

47

58

70

81

92

109 *p* *f* 4

123 4

137

147 *p* 2 2

162 2 1

176 *f* *p* 2 2

189 *p*

199 *f*

209

220 *p* *p* 2

234 *f* *p* *f* *p* *pp* 3

248 2 3 4 5 6 7 8 *f*