

Interval exercises for Soprano recorder

Victor Eijkhout

The image displays 13 staves of musical notation, each numbered 1 through 13 on the left. Each staff begins with a treble clef and a common time signature 'C'. The exercises are as follows:

- Staff 1:** A sequence of eighth notes: C4, D4 (sharped), E4, F4 (bowed), G4, A4 (bowed), B4, C5.
- Staff 2:** A sequence of eighth notes: C4, D4 (sharped), E4, F4 (bowed), G4, A4 (bowed), B4, C5.
- Staff 3:** A sequence of eighth notes: C4, D4 (sharped), E4, F4 (bowed), G4, A4 (bowed), B4, C5.
- Staff 4:** A sequence of eighth notes: C4, D4 (sharped), E4, F4 (bowed), G4, A4 (bowed), B4, C5.
- Staff 5:** A sequence of eighth notes: C4, D4 (sharped), E4, F4 (bowed), G4, A4 (bowed), B4, C5.
- Staff 6:** A sequence of eighth notes: C4, D4 (sharped), E4, F4 (bowed), G4, A4 (bowed), B4, C5.
- Staff 7:** A sequence of eighth notes: C4, D4 (sharped), E4, F4 (bowed), G4, A4 (bowed), B4, C5.
- Staff 8:** A sequence of eighth notes: C4, D4 (sharped), E4, F4 (bowed), G4, A4 (bowed), B4, C5.
- Staff 9:** A sequence of eighth notes: C4, D4 (sharped), E4, F4 (bowed), G4, A4 (bowed), B4, C5.
- Staff 10:** A sequence of eighth notes: C4, D4 (sharped), E4, F4 (bowed), G4, A4 (bowed), B4, C5.
- Staff 11:** A sequence of eighth notes: C4, D4 (sharped), E4, F4 (bowed), G4, A4 (bowed), B4, C5.
- Staff 12:** A sequence of eighth notes: C4, D4 (bowed), E4, F4 (bowed), G4, A4 (bowed), B4, C5.
- Staff 13:** A sequence of eighth notes: C4, D4 (bowed), E4, F4 (bowed), G4, A4 (bowed), B4, C5.

14

15

16

17

18

19

20

21

22

23

24

25

26

Detailed description: This image shows a sequence of 13 musical staves, numbered 14 through 26. Each staff is written in treble clef with a common time signature (C). The notes are as follows: Staff 14: C4, B3, A3, G3, F3, E3, D3, C3. Staff 15: C4, B3, A3, G3, F3, E3, D3, C3. Staff 16: C4, B3, A3, G3, F3, E3, D3, C3. Staff 17: C4, B3, A3, G3, F3, E3, D3, C3. Staff 18: C4, B3, A3, G3, F3, E3, D3, C3. Staff 19: C4, B3, A3, G3, F3, E3, D3, C3. Staff 20: C4, B3, A3, G3, F3, E3, D3, C3. Staff 21: C4, B3, A3, G3, F3, E3, D3, C3. Staff 22: C4, B3, A3, G3, F3, E3, D3, C3. Staff 23: C4, B3, A3, G3, F3, E3, D3, C3. Staff 24: C4, B3, A3, G3, F3, E3, D3, C3. Staff 25: C4, B3, A3, G3, F3, E3, D3, C3. Staff 26: C4, B3, A3, G3, F3, E3, D3, C3.

27



28



29



30



31



32



33



34



35



36



37



38



39



The image displays a sequence of 13 musical staves, numbered 27 through 39. Each staff is written in treble clef with a common time signature (C). The melody begins on middle C (C4) in staff 27 and proceeds with a series of eighth-note steps. A key signature change to one sharp (F#) occurs at the beginning of staff 31. The notation includes various eighth-note patterns, some beamed together, and occasional accidentals (sharps and naturals) to indicate specific pitches. The staves are arranged vertically, with each staff starting on a new line.

40

41

42

43

44

45

46

47

48

49

50

51

52

53



54



55



56



57



58



59



60



61



62



63



64



65



66



66

[illegible]

68

69



70

71



72



73



74



75



76



77

78

Musical notation for exercise 78, featuring a treble clef, common time signature, and a sequence of eighth and sixteenth notes.







106



107



108



109



110



111



112



113



114



115



116



117



118



119



120



121



122



123



124



125



126



127



128



129



130







157



158



159



160



161



162



163



164



165



166



167




168



169



170




171




172



173



174



175




176



177




178



179



180



181



182



183



184



185



186



187



188



189



190



191



192



193



194



195





209



210



211



212



213



214



215



216



217



218



219



220



221



222



223



224



225



226



227



228



229



230



231



232



233



234



235



236



237



238



239



240



241



242



243



244



245



246



247



248



249



250



251



252



253



254



255



256



257



258

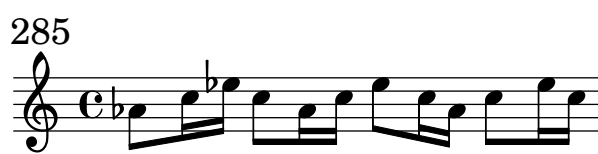
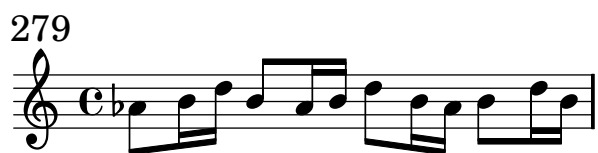
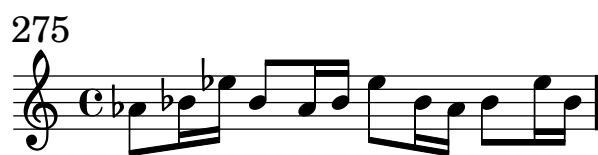


259



260





287



288



289



290



291



292



293



294



295



296



297

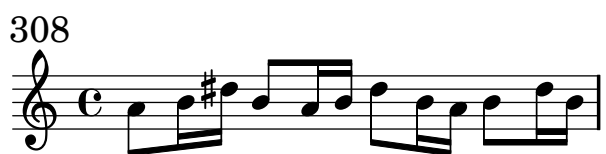
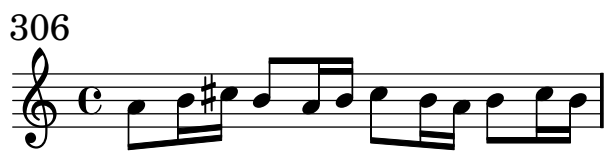
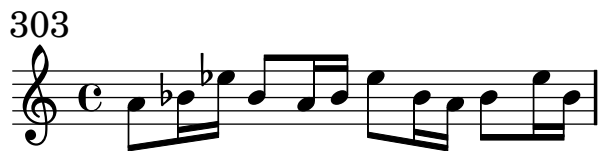
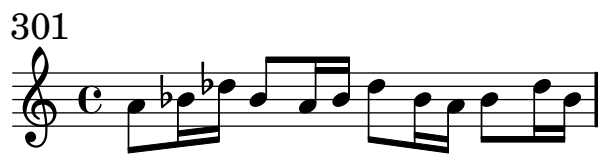


298

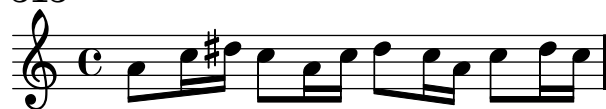


299





313



314



315



316



317



318



319



320



321



322



323



324



325



326



327



328



329



330



331



332



333



334



335



336



337



338



339



340



341



342



343



344



345



346



347



348



349



350



351



352



353



354



355



356



357



358



359



360



361



362



363



364



365



366



367



368



369



370



371



372



373



374



375



376



377



378



379



380



381



382



383



384



385



386



387



388



389



390



391



392



393



394



395



396



397



398



399



400



401



402



403



404



405



406



407



408



409



410



411



412



413



414



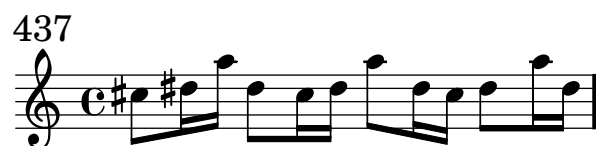
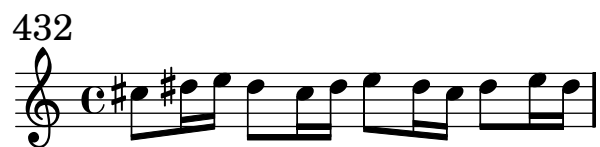
415



416







443



444



445



446



447



448



449



450



451



452



453



454



455



456



457



458



459



460



461



462



463



464



465



466



467



468



469



470



471



472



473



474



475



476



477



478



479



480



481



482



483



484



485



486



487



488



489



490



491



492



493



494



495



496



497



498



499



500



501



502



503



504



505



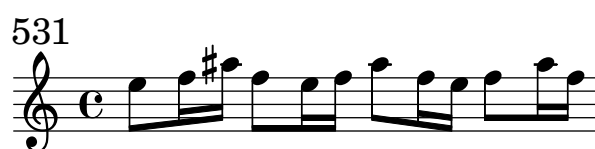
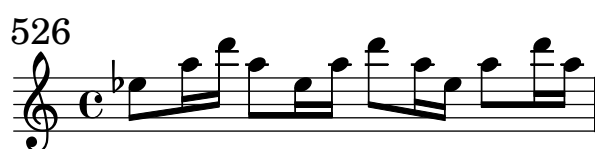
506



507







534



535



536



537



538



539



540



541



542



543



544

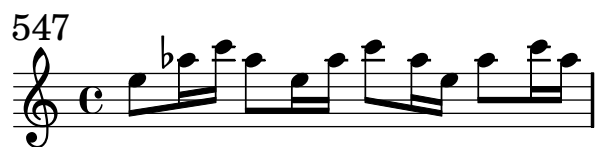


545



546







[illegible]

574



575

575

576



577

The musical notation for measure 577 is written on a single staff in treble clef with a common time signature (C). The key signature has two flats (B-flat and E-flat). The melody consists of eighth notes: B-flat4, A4, G4, F#4, E-flat4, D4, C4, B-flat3, A3, G3, F#3, E-flat3, D3, C3, B-flat2, A2, G2, F#2, E-flat2, D2, C2, B-flat1, A1, G1, F#1, E-flat1, D1, C1, B-flat0, A0, G0, F#0, E-flat0, D0, C0, B-flat-1, A-1, G-1, F#-1, E-flat-2, D-2, C-2, B-flat-3, A-3, G-3, F#-3, E-flat-4, D-4, C-4, B-flat-5, A-5, G-5, F#-5, E-flat-6, D-6, C-6, B-flat-7, A-7, G-7, F#-7, E-flat-8, D-8, C-8, B-flat-9, A-9, G-9, F#-9, E-flat-10, D-10, C-10, B-flat-11, A-11, G-11, F#-11, E-flat-12, D-12, C-12, B-flat-13, A-13, G-13, F#-13, E-flat-14, D-14, C-14, B-flat-15, A-15, G-15, F#-15, E-flat-16, D-16, C-16, B-flat-17, A-17, G-17, F#-17, E-flat-18, D-18, C-18, B-flat-19, A-19, G-19, F#-19, E-flat-20, D-20, C-20, B-flat-21, A-21, G-21, F#-21, E-flat-22, D-22, C-22, B-flat-23, A-23, G-23, F#-23, E-flat-24, D-24, C-24, B-flat-25, A-25, G-25, F#-25, E-flat-26, D-26, C-26, B-flat-27, A-27, G-27, F#-27, E-flat-28, D-28, C-28, B-flat-29, A-29, G-29, F#-29, E-flat-30, D-30, C-30, B-flat-31, A-31, G-31, F#-31, E-flat-32, D-32, C-32, B-flat-33, A-33, G-33, F#-33, E-flat-34, D-34, C-34, B-flat-35, A-35, G-35, F#-35, E-flat-36, D-36, C-36, B-flat-37, A-37, G-37, F#-37, E-flat-38, D-38, C-38, B-flat-39, A-39, G-39, F#-39, E-flat-40, D-40, C-40, B-flat-41, A-41, G-41, F#-41, E-flat-42, D-42, C-42, B-flat-43, A-43, G-43, F#-43, E-flat-44, D-44, C-44, B-flat-45, A-45, G-45, F#-45, E-flat-46, D-46, C-46, B-flat-47, A-47, G-47, F#-47, E-flat-48, D-48, C-48, B-flat-49, A-49, G-49, F#-49, E-flat-50, D-50, C-50, B-flat-51, A-51, G-51, F#-51, E-flat-52, D-52, C-52, B-flat-53, A-53, G-53, F#-53, E-flat-54, D-54, C-54, B-flat-55, A-55, G-55, F#-55, E-flat-56, D-56, C-56, B-flat-57, A-57, G-57, F#-57, E-flat-58, D-58, C-58, B-flat-59, A-59, G-59, F#-59, E-flat-60, D-60, C-60, B-flat-61, A-61, G-61, F#-61, E-flat-62, D-62, C-62, B-flat-63, A-63, G-63, F#-63, E-flat-64, D-64, C-64, B-flat-65, A-65, G-65, F#-65, E-flat-66, D-66, C-66, B-flat-67, A-67, G-67, F#-67, E-flat-68, D-68, C-68, B-flat-69, A-69, G-69, F#-69, E-flat-70, D-70, C-70, B-flat-71, A-71, G-71, F#-71, E-flat-72, D-72, C-72, B-flat-73, A-73, G-73, F#-73, E-flat-74, D-74, C-74, B-flat-75, A-75, G-75, F#-75, E-flat-76, D-76, C-76, B-flat-77, A-77, G-77, F#-77, E-flat-78, D-78, C-78, B-flat-79, A-79, G-79, F#-79, E-flat-80, D-80, C-80, B-flat-81, A-81, G-81, F#-81, E-flat-82, D-82, C-82, B-flat-83, A-83, G-83, F#-83, E-flat-84, D-84, C-84, B-flat-85, A-85, G-85, F#-85, E-flat-86, D-86, C-86, B-flat-87, A-87, G-87, F#-87, E-flat-88, D-88, C-88, B-flat-89, A-89, G-89, F#-89, E-flat-90, D-90, C-90, B-flat-91, A-91, G-91, F#-91, E-flat-92, D-92, C-92, B-flat-93, A-93, G-93, F#-93, E-flat-94, D-94, C-94, B-flat-95, A-95, G-95, F#-95, E-flat-96, D-96, C-96, B-flat-97, A-97, G-97, F#-97, E-flat-98, D-98, C-98, B-flat-99, A-99, G-99, F#-99, E-flat-100, D-100, C-100, B-flat-101, A-101, G-101, F#-101, E-flat-102, D-102, C-102, B-flat-103, A-103, G-103, F#-103, E-flat-104, D-104, C-104, B-flat-105, A-105, G-105, F#-105, E-flat-106, D-106, C-106, B-flat-107, A-107, G-107, F#-107, E-flat-108, D-108, C-108, B-flat-109, A-109, G-109, F#-109, E-flat-110, D-110, C-110, B-flat-111, A-111, G-111, F#-111, E-flat-112, D-112, C-112, B-flat-113, A-113, G-113, F#-113, E-flat-114, D-114, C-114, B-flat-115, A-115, G-115, F#-115, E-flat-116, D-116, C-116, B-flat-117, A-117, G-117, F#-117, E-flat-118, D-118, C-118, B-flat-119, A-119, G-119, F#-119, E-flat-120, D-120, C-120, B-flat-121, A-121, G-121, F#-121, E-flat-122, D-122, C-122, B-flat-123, A-123, G-123, F#-123, E-flat-124, D-124, C-124, B-flat-125, A-125, G-125, F#-125, E-flat-126, D-126, C-126, B-flat-127, A-127, G-127, F#-127, E-flat-128, D-128, C-128, B-flat-129, A-129, G-129, F#-129, E-flat-130, D-130, C-130, B-flat-131, A-131, G-131, F#-131, E-flat-132, D-132, C-132, B-flat-133, A-133, G-133, F#-133, E-flat-134, D-134, C-134, B-flat-135, A-135, G-135, F#-135, E-flat-136, D-136, C-136, B-flat-137, A-137, G-137, F#-137, E-flat-138, D-138, C-138, B-flat-139, A-139, G-139, F#-139, E-flat-140, D-140, C-140, B-flat-141, A-141, G-141, F#-141, E-flat-142, D-142, C-142, B-flat-143, A-143, G-143, F#-143, E-flat-144, D-144, C-144, B-flat-145, A-145, G-145, F#-145, E-flat-146, D-146, C-146, B-flat-147, A-147, G-147, F#-147, E-flat-148, D-148, C-148, B-flat-149, A-149, G-149, F#-149, E-flat-150, D-150, C-150, B-flat-151, A-151, G-151, F#-151, E-flat-152, D-152, C-152, B-flat-153, A-153, G-153, F#-153, E-flat-154, D-154, C-154, B-flat-155, A-155, G-155, F#-155, E-flat-156, D-156, C-156, B-flat-157, A-157, G-157, F#-157, E-flat-158, D-158, C-158, B-flat-159, A-159, G-159, F#-159, E-flat-160, D-160, C-160, B-flat-161, A-161, G-161, F#-161, E-flat-162, D-162, C-162, B-flat-163, A-163, G-163, F#-163, E-flat-164, D-164, C-164, B-flat-165, A-165, G-165, F#-165, E-flat-166, D-166, C-166, B-flat-167, A-167, G-167, F#-167, E-flat-168, D-168, C-168, B-flat-169, A-169, G-169, F#-169, E-flat-170, D-170, C-170, B-flat-171, A-171, G-171, F#-171, E-flat-172, D-172, C-172, B-flat-173, A-173, G-173, F#-173, E-flat-174, D-174, C-174, B-flat-175, A-175, G-175, F#-175, E-flat-176, D-176, C-176, B-flat-177, A-177, G-177, F#-177, E-flat-178, D-178, C-178, B-flat-179, A-179, G-179, F#-179, E-flat-180, D-180, C-180, B-flat-181, A-181, G-181, F#-181, E-flat-182, D-182, C-182, B-flat-183, A-183, G-183, F#-183, E-flat-184, D-184, C-184, B-flat-185, A-185, G-185, F#-185, E-flat-186, D-186, C-186, B-flat-187, A-187, G-187, F#-187, E-flat-188, D-188, C-188, B-flat-189, A-189, G-189, F#-189, E-flat-190, D-190, C-190, B-flat

578

579



580

The musical notation shows a single staff with a treble clef and a common time signature 'C'. The melody consists of eighth notes: G4, A4, B4, C5, D5, E5, F#5, G5, A5, B5, C6, D6, E6, F#6, G7, A7, B7, C8.

581



581

582

582

583

583

584



585

585



599



600



601



602



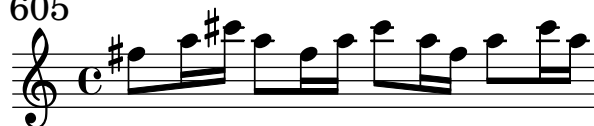
603



604



605



606



607



608



609




610




611



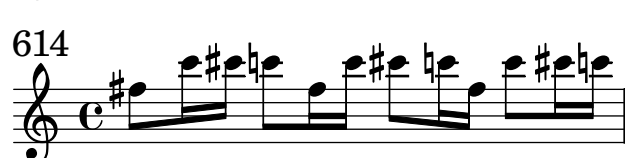
612




613




614




615



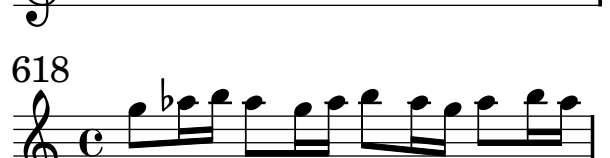
616




617




618




619




620




621




622

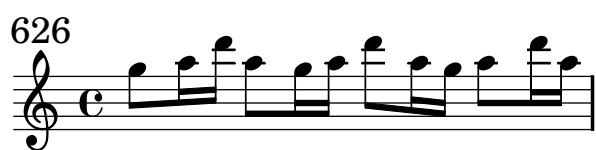
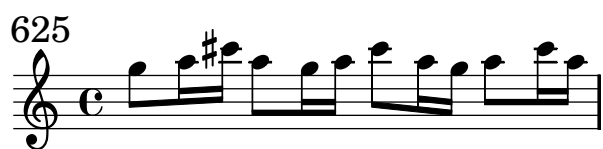


623



624







[illegible]

651

Example 10

[illegible]

653

[illegible]

655

656

657

657

658

659

[illegible]

