

# ВАРИАЦИИ НА ТЕМУ РОКОКО

## Violoncello

П. ЧАЙКОВСКИЙ. Соч. 33

Moderato assai quasi Andante **Thema**  
 Moderato semplice

20 *p* *espress.*

*gliss.* *f* *p* [*più f*]

10 *f* *pp* *f*

3 20 2 *f* *p*

Tempo della Thema

Var. I

*più f*

10

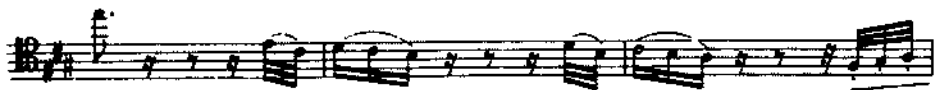
*p*

3 20 2

# Violoncello



## Tempo della Thema



# Violoncello

## CADENZA

*lento*  
*pizz.* *arco* *pizz. largamente*  
*pp*

## Andante

*Var. III*  
*p molto espress.*  
 10  
 20 *stringendo* *riten.*  
*a tempo*  
*mf* *dim.* *pp*  
 30 *riten.*

# Violoncello

Allegro vivo

Var. IV

*f* *cresc.*

*f* *p*

*cresc.* *f*

10 *cresc.*

*f* *f*

20 *p* *cresc.*

## Violoncello

Violoncello musical score page 5, featuring ten staves of music. The score is written in G major (one sharp) and 2/4 time. The first staff begins with a forte (*f*) dynamic. The second staff includes a *dim.* (diminuendo) marking. The third staff contains a measure number box with the number 30, a piano (*p*) dynamic, and a *cresc.* (crescendo) marking. The fourth staff features a forte (*f*) dynamic and a piano (*p*) dynamic. The fifth staff includes a *cresc.* marking. The sixth staff features a forte (*f*) dynamic. The seventh staff contains a measure number box with the number 40 and a forte (*f*) dynamic. The eighth staff features a forte (*f*) dynamic. The ninth staff includes a forte (*f*) dynamic and a *v* (accrescendo) marking. The score concludes with a final cadence on the tenth staff.

## Violoncello

Andante grazioso

Var.V *mf* *riten.*

a tempo

*mf* *ppac.*

10

un poco animato

20 *a tempo*

*un poco animato*

# Violoncello

30

a tempo

riten.

40

*mf*

*p*

*mf*

a tempo

un poco animato

*f*

50

*p*

*f* → *p*

## Violoncello

Allegro moderato

Var. VI

ff

10

3

CADENZA

20

30

40

mf cresc.

f

p

Andante sostenuto

Var. VII

mf antabile

10

f



# Violoncello

*mf* 20

*un poco stringendo*

30 *riten.* *ff* *cresc.* *dim.*

*a tempo* 40 *mf cantabile*

50 *cresc.* *ff*

60 *un poco tranquillo*

70 *molto riten.* *pp* *ppp*

## Violoncello

Allegro moderato con anima

Var. VIII  
e Coda

*p* *poco a poco cresc.*

*ff*

*p*

*[mf]* *p*

*f* *mf*

*f* *[mf]*

*f* *p*

# Violoncello

Measures 27-29 of the cello part. The music is in 4/4 time with a key signature of one sharp (F#). It features a melodic line with slurs and a bass line with slurs. A box containing the number '27' is located below the second staff.

Measure 30 of the cello part, continuing the melodic and bass lines from the previous measures. A box containing the number '30' is located at the beginning of the staff.

Measures 31-32 of the cello part. The notation includes slurs and a dynamic marking of *ppicc.* (pizzicato) below the first staff.

Measures 33-34 of the cello part, showing the continuation of the melodic and bass lines.

Measures 35-36 of the cello part, featuring a change in the bass line's rhythmic pattern.

Measures 37-38 of the cello part, consisting of a series of arpeggiated chords with slurs. A dynamic marking of *ppicc.* is present.

Measures 39-40 of the cello part, continuing the arpeggiated chord pattern. A box containing the number '40' is located at the beginning of the staff.

Measures 41-42 of the cello part, featuring triplets of arpeggiated chords. A dynamic marking of *ppicc.* is present.

Measures 43-44 of the cello part, continuing the triplet arpeggiated chord pattern.

Measures 45-46 of the cello part, concluding the section with a melodic and bass line. A dynamic marking of *ff* (fortissimo) is present at the beginning.

# Violoncello

50