

# Secondo Ballo detta la Serena

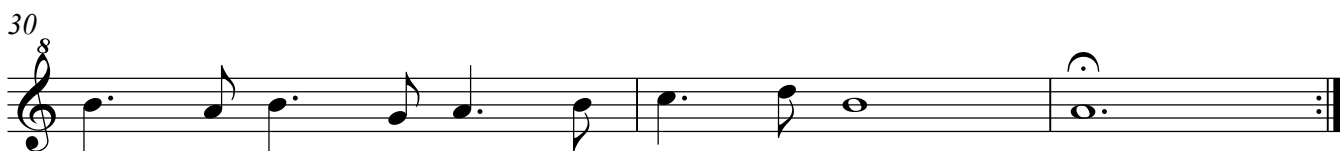
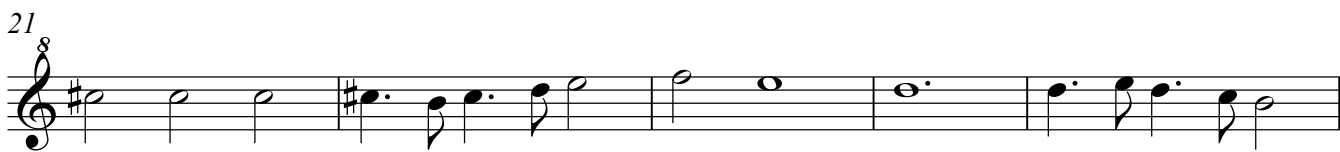
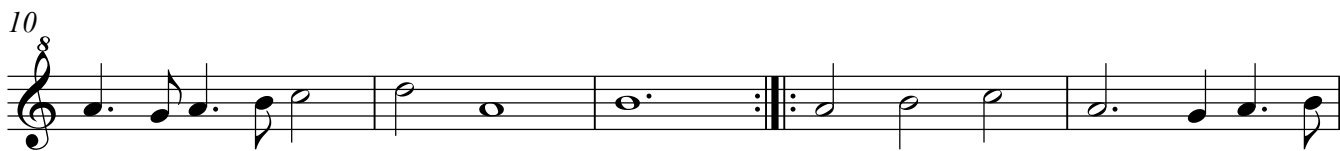
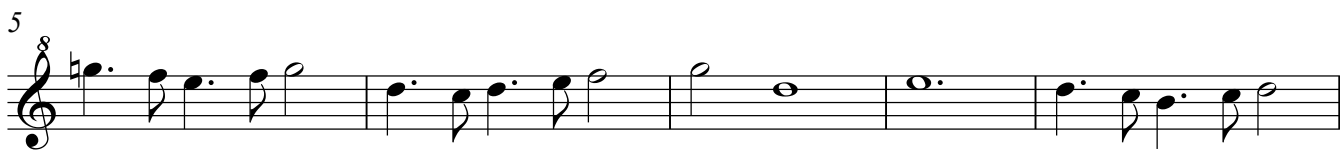
Lorenzo Allegri (c1573-1648)

6  
11  
16

## Seconda Parte

1  
6  
12  
17  
22  
27

# Terza Parte: Gagliarda



# Secondo Ballo detta la Serena

Lorenzo Allegri (c1573-1648)

Musical notation for the first part of the piece, measures 1-16. The notation is in treble clef, common time (C), and features a key signature of one sharp (F#). The melody consists of eighth and sixteenth notes, with some rests and a final fermata on a whole note at measure 16.

## Seconda Parte

Musical notation for the second part of the piece, measures 1-27. The notation is in treble clef, common time (C), and features a key signature of one sharp (F#). The melody is more rhythmic, featuring many eighth and sixteenth notes, and ends with a double bar line and repeat sign at measure 27.

# Terza Parte: Gagliarda

1

5

10

15

21

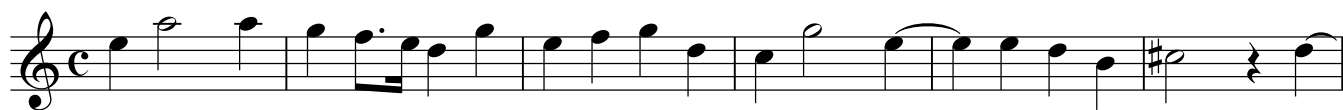
26

29

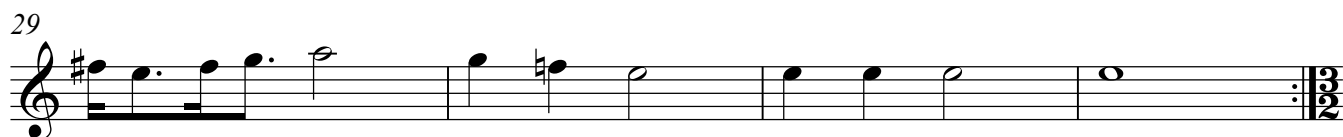
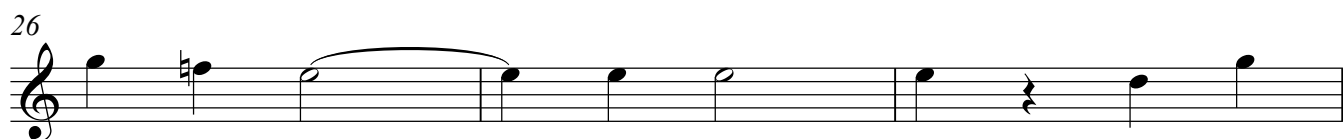
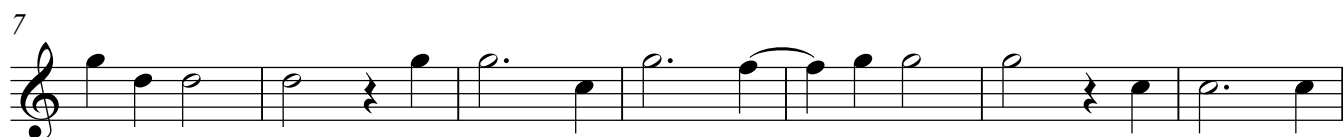
Treble Recorder

# Secondo Ballo detta la Serena

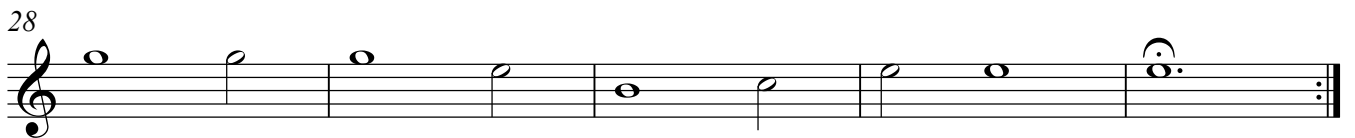
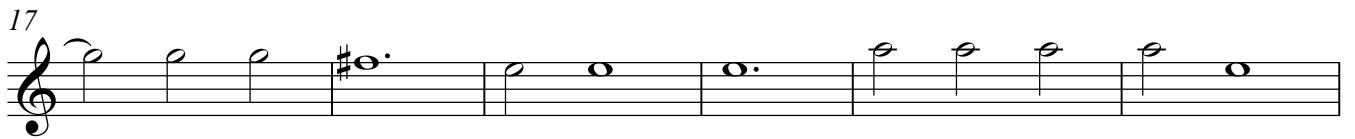
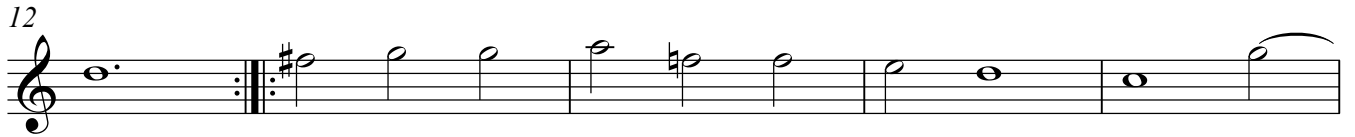
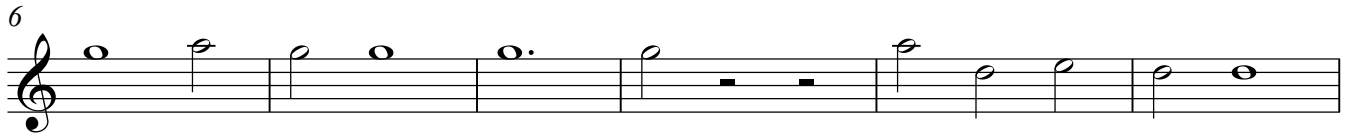
Lorenzo Allegri (c1573-1648)



## Seconda Parte



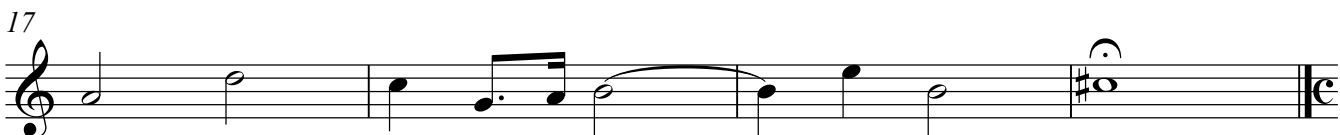
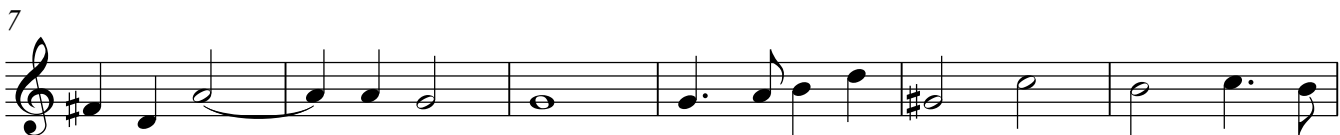
# Terza Parte: Gagliarda



Tenor Recorder

# Secondo Ballo detta la Serena

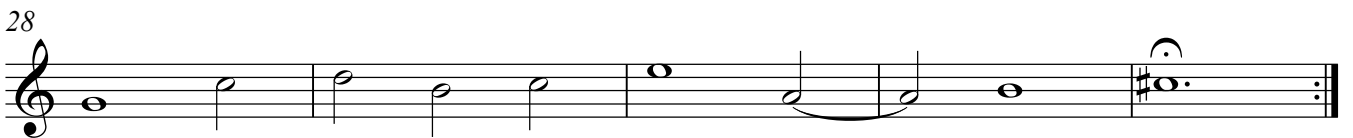
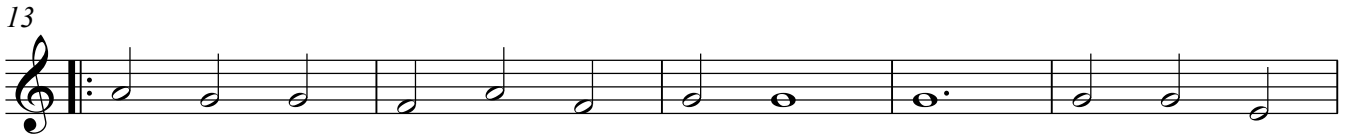
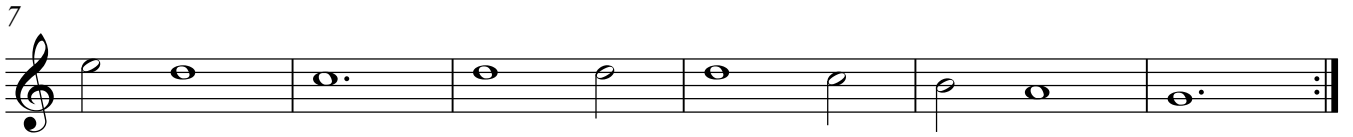
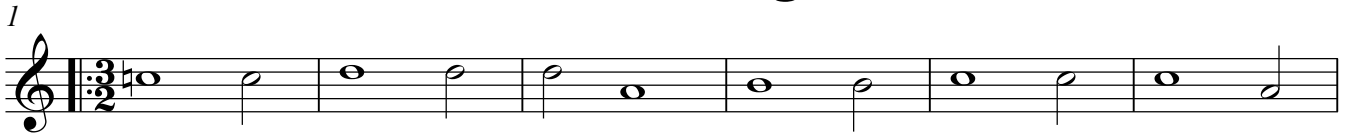
Lorenzo Allegri (c1573-1648)



## Seconda Parte



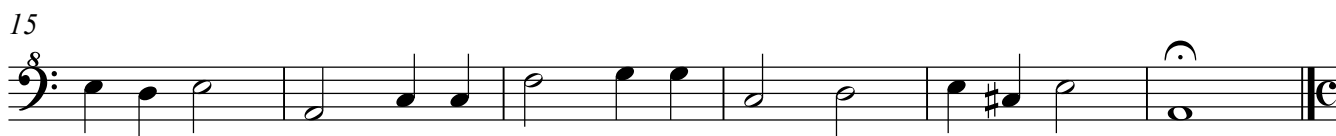
# Terza Parte: Gagliarda





# Secondo Ballo detta la Serena

Lorenzo Allegri (c1573-1648)

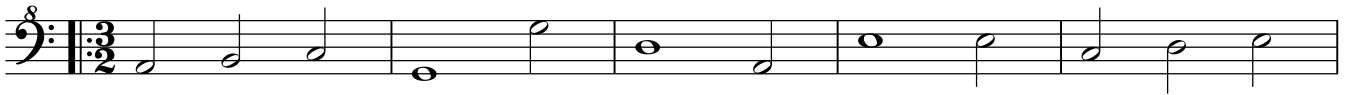


## Seconda Parte



# Terza Parte: Gagliarda

1



6



12



18



24



29

