

Sopranino Recorder

# Sonata a Sei, (SPCM, No.3)

(from Sacro-Profanus Concentus Musicus, (1662))

Johann Heinrich Schmelzer (c.1620–23 –1680)

**Allegro**

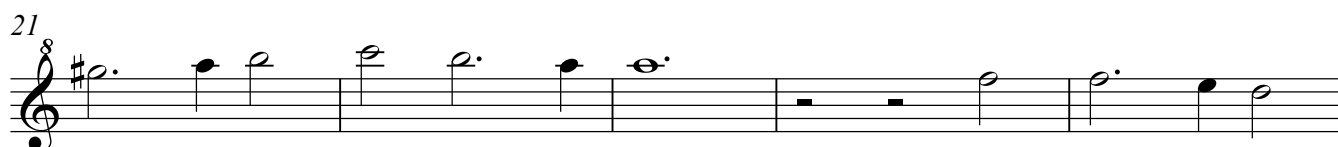
**11**



**16**



**21**



**26**



**31**



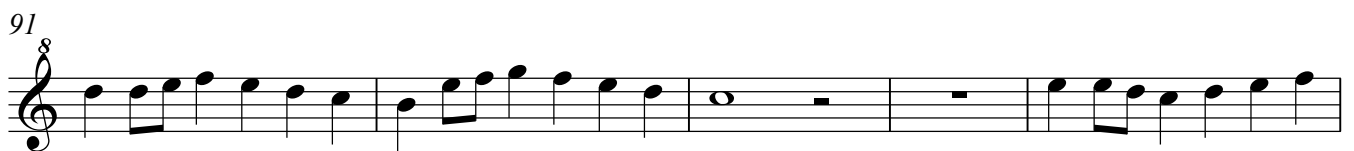
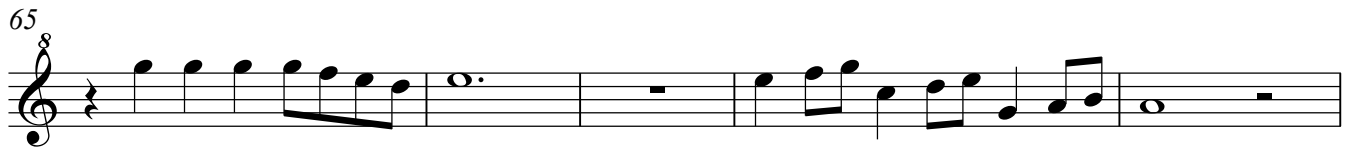
**35**



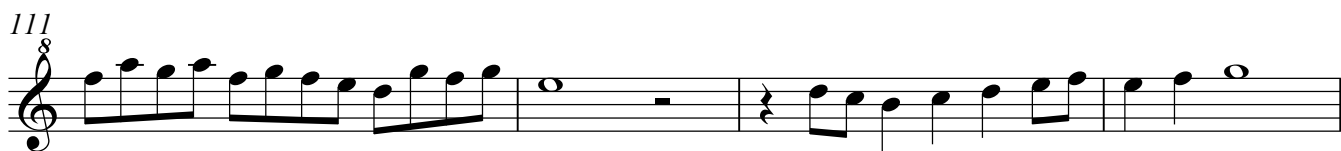
**39**

**14**





111



115



120



125



129



143



148



Descant Recorder 1

# Sonata a Sei, (SPCM, No.3)

(from Sacro-Profanus Concentus Musicus, (1662))

Johann Heinrich Schmelzer (c.1620–23 –1680)

**Allegro**

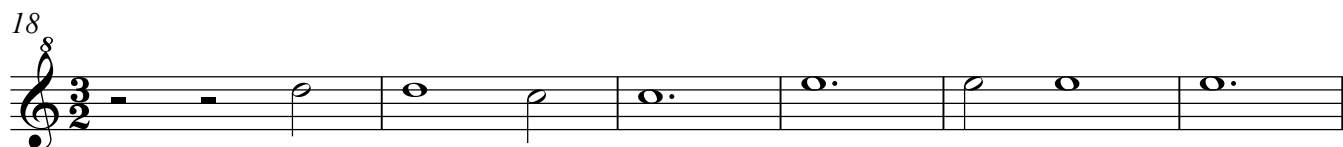
8



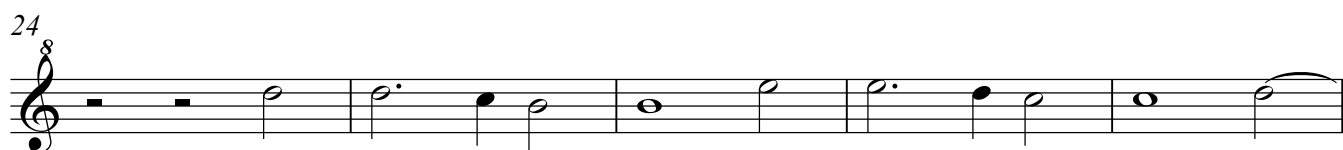
13



18



24



29

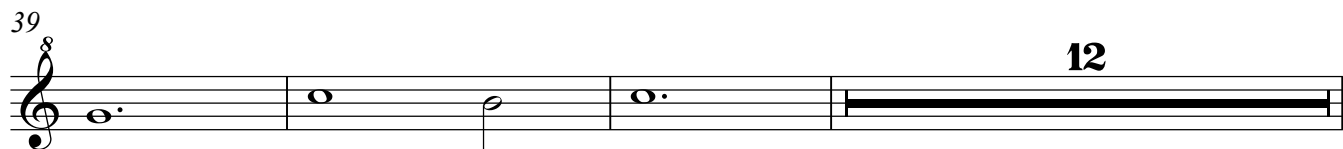


35

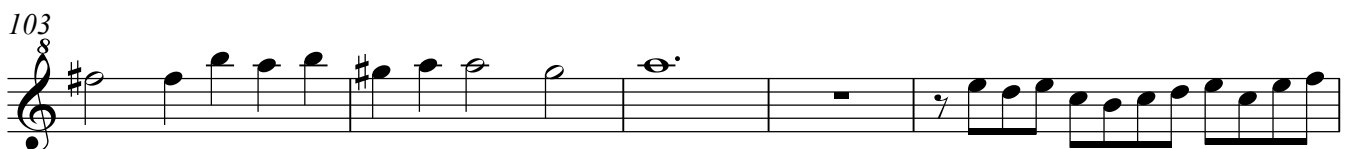
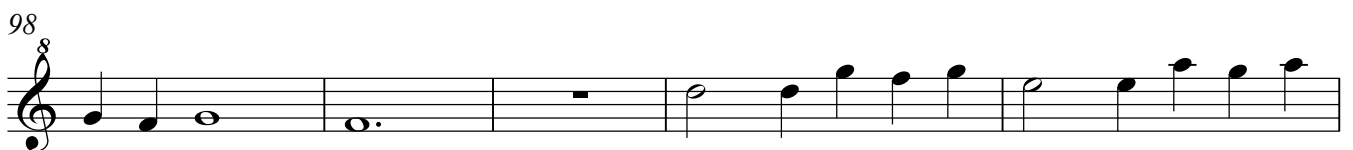
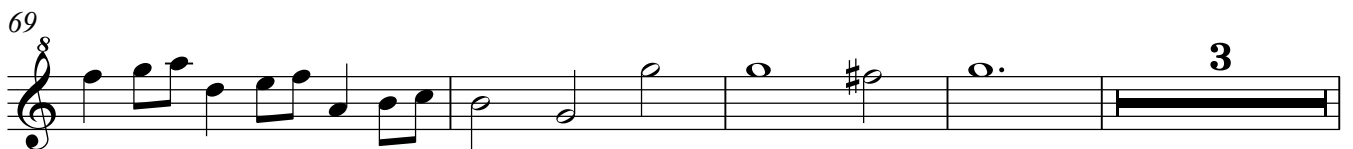
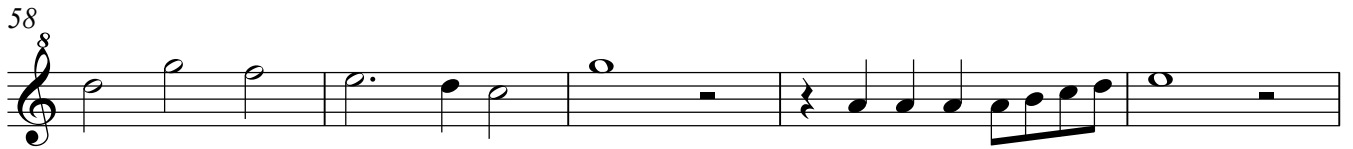
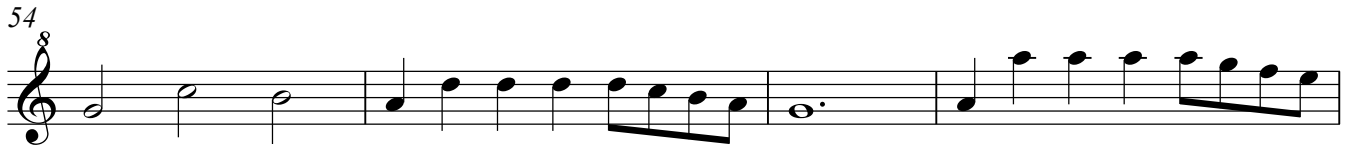


39

12



## Descant Recorder 1



108

113

118

122

126

131

136

143

149

Descant Recorder 2

# Sonata a Sei, (SPCM, No.3)

(from Sacro-Profanus Concentus Musicus, (1662))

Johann Heinrich Schmelzer (c.1620–23 –1680)

**Allegro**

8 **6**

11

16

22

28

35

41 **5**

50 **4**

59 **4**

67 **6**

76

82 **2**

89

7

100

106

4

114

119

125

132

137

142

148



Treble Recorder

# Sonata a Sei, (SPCM, No.3)

(from Sacro-Profanus Concentus Musicus, (1662))

Johann Heinrich Schmelzer (c.1620–23 –1680)

**Allegro**

3

8

13

4

22

29

35

42

3

49

54

5

63

4

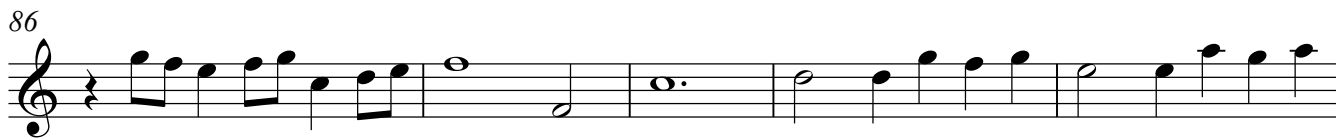
71

75

80 **2**



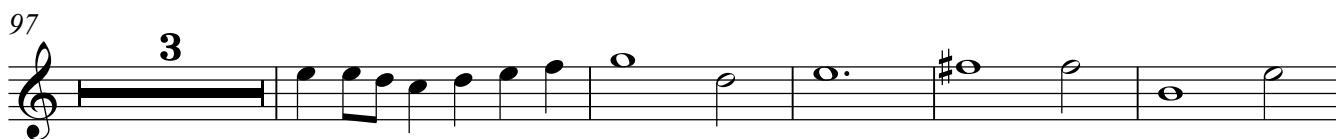
86



91



97 **3**



105 **4**



112



117



124



130 **3**



137 **5**



147



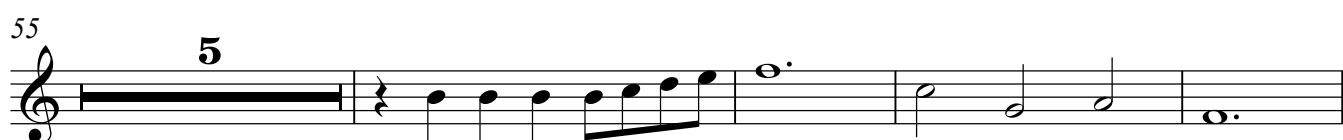
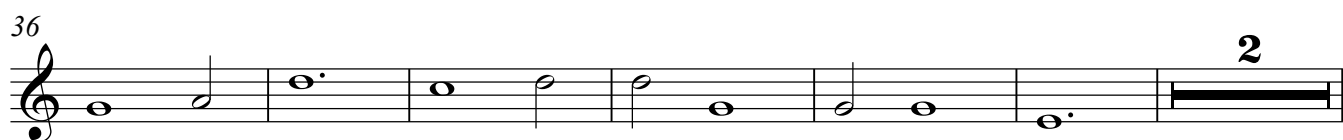
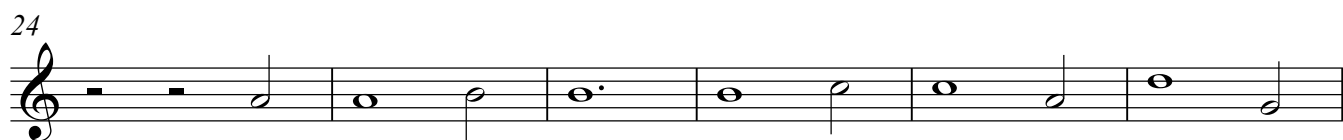
Tenor Recorder

# Sonata a Sei, (SPCM, No.3)

(from Sacro-Profanus Concentus Musicus, (1662))

Johann Heinrich Schmelzer (c.1620–23 –1680)

**Allegro**



78

3

84

89

4

97

2

104

8

117

123

129

8

142

148

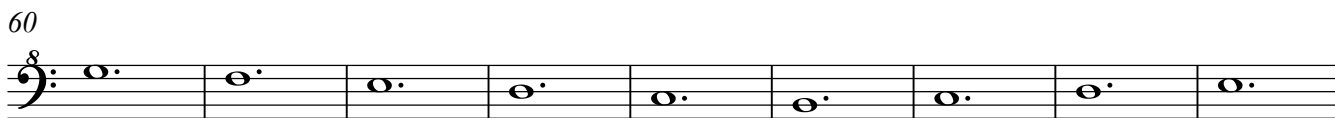
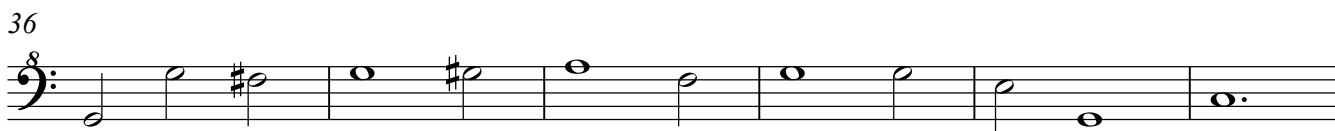
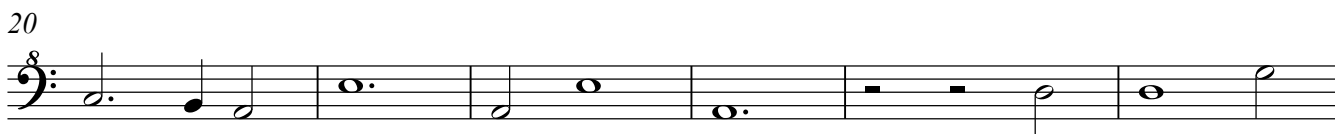
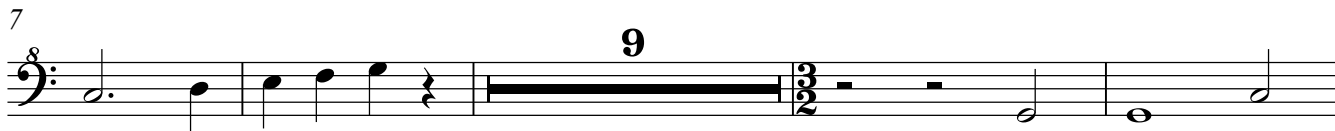
3

Bass Recorder (optional) **Sonata a Sei, (SPCM, No.3)**

(from Sacro-Profanus Concentus Musicus, (1662))

Johann Heinrich Schmelzer (c.1620–23 –1680)

**Allegro**



78



87



96



105



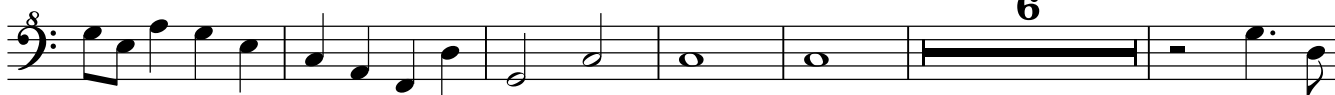
114



119



125



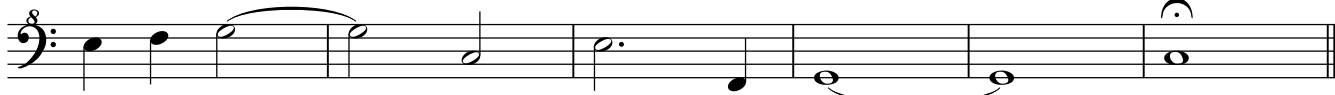
137



143

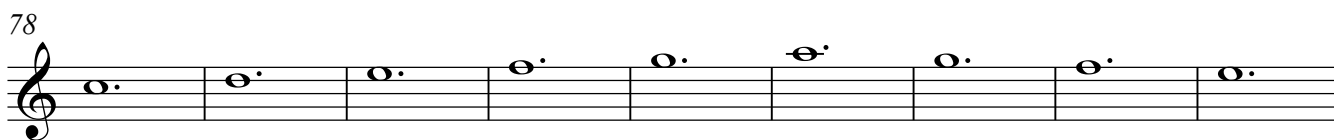


148

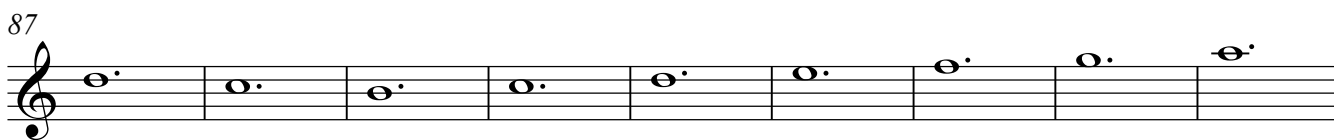




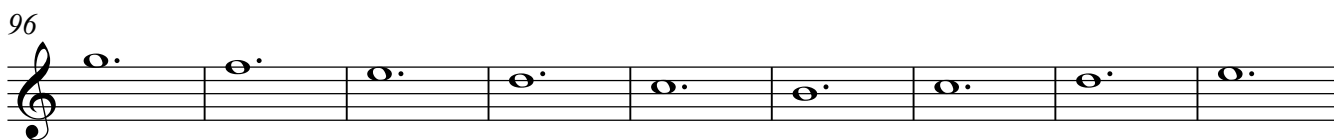
78



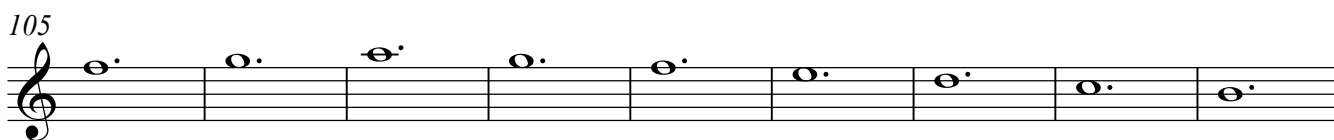
87



96



105



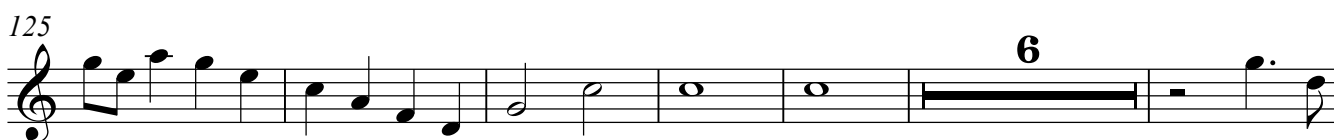
114



119



125



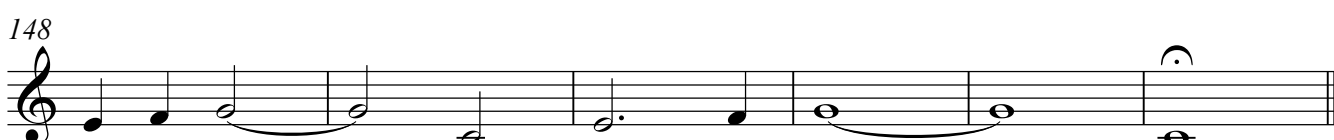
137



143



148

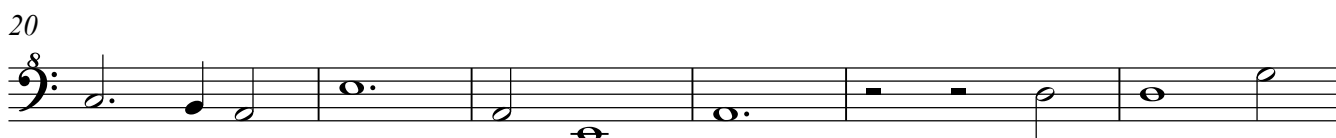
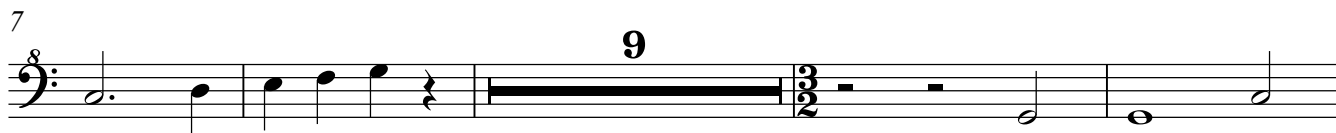




Great Bass Recorder **Sonata a Sei, (SPCM, No.3)**  
(from Sacro-Profanus Concentus Musicus, (1662))

Johann Heinrich Schmelzer (c.1620–23 –1680)

**Allegro**



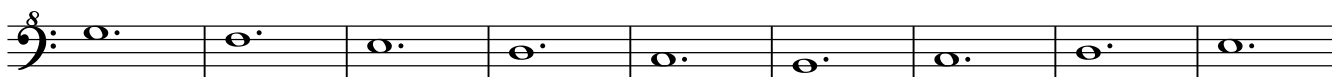
78



87



96



105



114



119



125



137



143



148

